

ENID, OKLAHOMA

VOR/DME RWY 35R

VORTAC END 115.4 Chan 101	APCH CRS 342°	Rwy Idg 5024 TDZE 1284 Arprt Elev 1307
---	-------------------------	---

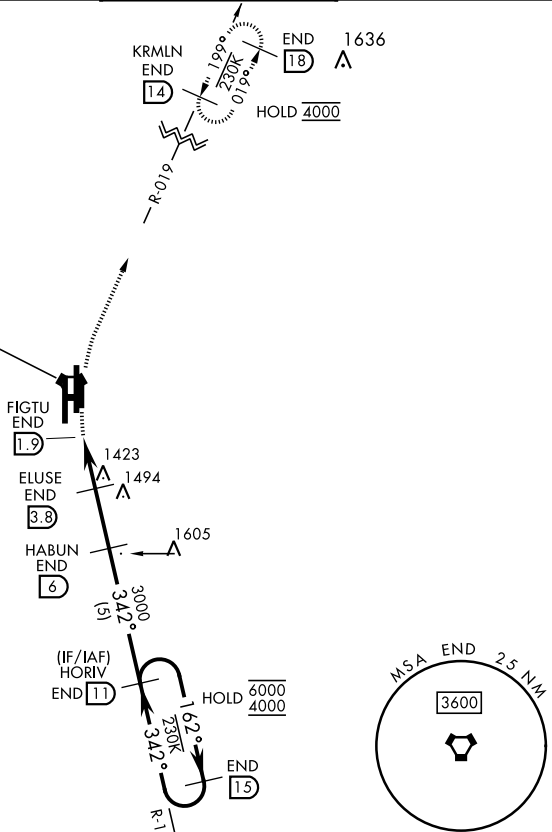
[USAF]

VANCE AFB (KEND)

<p>Visibility reduction by helicopters not authorized.</p>		<p>MISSED APPROACH: Climbing right turn to 4000 on heading 005°, intercept END VORTAC R-019 to KRMLN and hold.</p>	
<p>ATIS ★ 115.4 263.15</p>	<p>APP CON 125.45 343.625 (E) 126.75 346.325 (W)</p>	<p>TOWER ★ 124.05 259.1</p>	<p>GND CON 121.675 289.4</p>

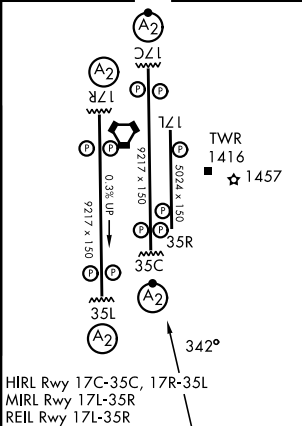
FOR USE BY 71 FTW ACFT ONLY

VANCE
115.4 END ≡:.
Chan 101



EMERG SAFE ALT 100 NM 4500

ELEV 1307	TDZE 1284
-----------	-----------



HIRL Rwy 17C-35C, 17R-35L
MIRL Rwy 17L-35R
REIL Rwy 17L-35R

	4000	↑ END R-019	KRMLN END 14	VGS1 and descent angles not coincident (VGS1 Angle 3.00/TCH 50).
END VORTAC	FIGTU END 1.9	ELUSE END 3.8	HABUN END 6	HORV END 11
				END 15
				6000
				4000
	1.1	1.9 NM	2.2 NM	
CATEGORY	A	B	C	D
S-35R	1720-1 ³ / ₈	436 (500-1 ³ / ₈)		NA
CIRCLING	1760-1 ³ / ₈	453 (500-1 ³ / ₈)		NA

ENID, OKLAHOMA

36°20'N-97°55'W

VANCE AFB (KEND)

Orig 24MAR22

VOR/DME RWY 35R

SC-1, 11 JUN 2026 to 09 JUL 2026

SC-1, 11 JUN 2026 to 09 JUL 2026