

# VOR/DME or TACAN RWY 35L

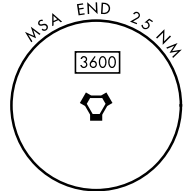
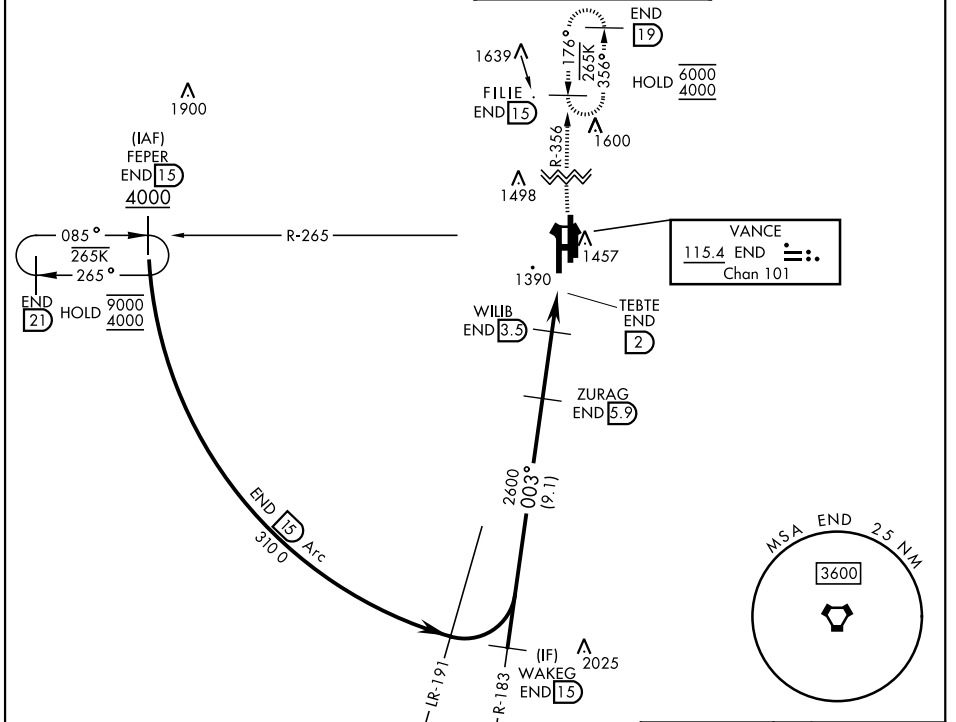
VORTAC END <b>115.4</b> Chan <b>101</b>	APCH CRS <b>003°</b>	Rwy Idg <b>9217</b> TDZE <b>1307</b> Arprt Elev <b>1307</b>
---	-------------------------	---

[USAF]

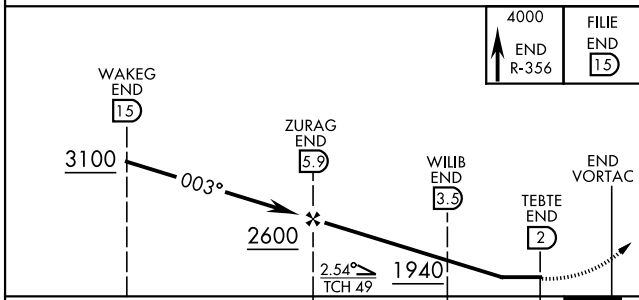
VANCE AFB (KEND)

<p>▼ * When ALS inop, increase vis to 1 mile.</p>	<p>SALS <b>(A2)</b></p>	<p>MISSED APPROACH: Climb to 4000, intercept END VORTAC R-356 to FILIE and hold.</p>
---	-----------------------------	--

<p>ATIS ★ <b>115.4 263.15</b></p>	<p>APP CON <b>125.45 343.625 (E)</b> <b>126.75 346.325 (W)</b></p>	<p>TOWER ★ <b>124.05 259.1</b></p>	<p>GND CON <b>121.675 289.4</b></p>
---------------------------------------	--	--	---

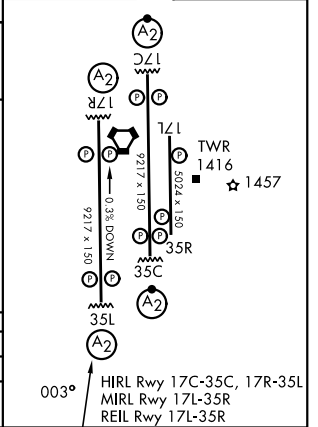


EMERG SAFE ALT 100 NM 4500



ELEV	1307	TDZE	1307
------	------	------	------

CATEGORY	A	B	C	D	E
S-35L*	1640-¾		333	(400-¾)	
CIRCLING	1760-1	453 (500-1)	1800-1½ 493 (500-1½)	1900-2 593 (600-2)	2400-3 1093 (1100-3)



# VOR/DME or TACAN RWY 35L

SC-1, 11 JUN 2026 to 09 JUL 2026

SC-1, 11 JUN 2026 to 09 JUL 2026