

WAAS CH <b>61310</b> <b>W27A</b>	APP CRS <b>273°</b>	Rwy Ldg TDZE Apt Elev	<b>6502</b> <b>139</b> <b>147</b>
--	------------------------	-----------------------------	---

# RNAV (GPS) RWY 27

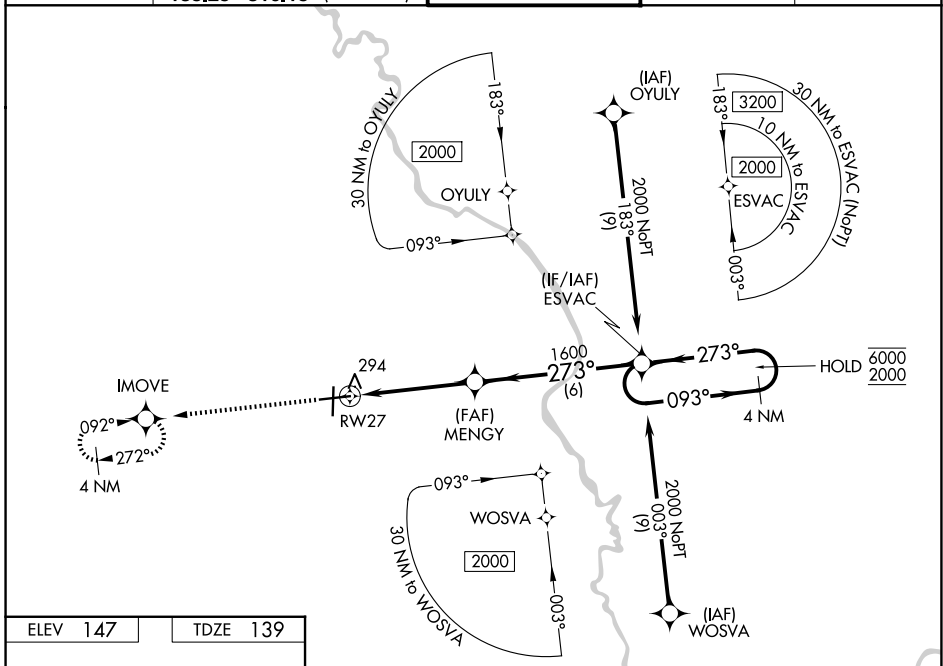
FLORENCE RGNL (FLO)

RNP APCH - GPS.

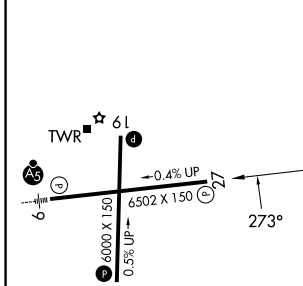
**▽** Circling Rwy 1, 19 NA at night.  
**▲** For uncompensated Baro-VNAV systems, LNAV/VNAV NA below -7°C or above 54°C.

MISSED APPROACH: Climb to 2200 direct IMOVE and hold, continue climb-in-hold to 2200.

ATIS <b>123.625</b>	FLORENCE APP CON* <b>118.6 341.7</b> (256°-074°) <b>135.25 316.15</b> (075°-255°)	FLORENCE TOWER* <b>125.1</b> (CTAF) <b>353.85</b>	GND CON <b>121.9 353.85</b>	UNICOM <b>122.95</b>
------------------------	---	--	--------------------------------	-------------------------



ELEV <b>147</b>	TDZE <b>139</b>
-----------------	-----------------



2200	IMOVE	ESVAC	4 NM Holding Pattern
		MENGY	
	1.2 NM to RWY 27	1600	
		273°	093° → 6000 ← 273° 2000
		1600	GP 3.00° TCH 46
	1.2 NM	3.3 NM	6 NM

CATEGORY	A	B	C	D
LPV DA		389-1	250 (300-1)	
LNAV/VNAV DA		465-1	326 (400-1)	
LNAV MDA	560-1	421 (500-1)	560-1¼	421 (500-1¼)
CIRCLING	640-1 493 (500-1)	660-1 513 (600-1)	900-2¼ 753 (800-2¼)	900-2½ 753 (800-2½)

MIRL Rwy 1-19  
 HIRL Rwy 9-27  
 REIL Rwy 1, 19 and 27

FLORENCE, SOUTH CAROLINA  
 Amdt 1A 30NOV23

34°11'N-79°43'W

# FLORENCE RGNL (FLO)

## RNAV (GPS) RWY 27

SE-2, 11 JUN 2026 to 09 JUL 2026

SE-2, 11 JUN 2026 to 09 JUL 2026