

LOC I-POB <b>110.9</b>	APCH CRS <b>228°</b>	Rwy Idg TDZE Arpt Elev <b>7501</b> <b>200</b> <b>225</b>	[USAF]	POPE AAF (KPOB)
---------------------------	-------------------------	---	--------	-----------------

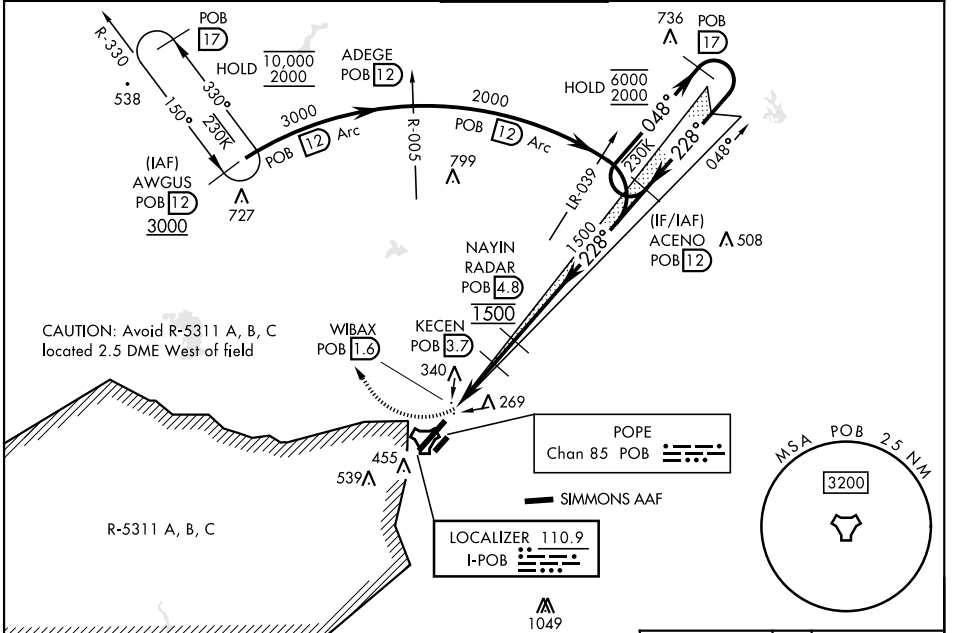
**RADAR required**

**ALS-1**

**MISSED APPROACH:** Climbing right turn to 2000 direct AWGUS and hold. For acct not equipped with TACAN or suitable RNAV system with GPS: Climbing right turn to 2000 hdg 350°, expect RADAR vectors.

\* When ALS inop, increase RVR to 40 and vis to ¾ mile.  
 \*\* When ALS inop, increase CAT AB RVR to 55 and vis to 1 mile; CAT CD RVR to 60, vis to 1½ miles.  
 \*\*\* Circling not authorized SE of Rwy 5-23.  
 \*\*\*\* When ALS inop, increase CAT AB RVR to 55 and vis to 1 mile; CAT CD vis to 1½ miles.

FAYETTEVILLE APP CON		TOWER		GND CON		CLNC DEL	
ATIS	<b>125.175 285.575</b>	(271° - 090°)	<b>135.025 291.1</b>	<b>124.55 275.8</b>	<b>124.55 275.8</b>	<b>124.55 275.8</b>	<b>124.55 275.8</b>
<b>132.3 353.725</b>	<b>133.0 290.25</b>	(091° - 270°)					



ELEV	225	TDZE	200
------	-----	------	-----

**AWGUS POB 12**

**NAYIN POB 4.8 RADAR**

**ACENO POB 12**

**POB 17**

**KECEN POB 3.7**

**WIBAX POB 1.6**

**POB 2.1**

**1120**

**1500**

**6000**

**2000**

**GS 3.00° TCH 54**

**0.7 NM**

**2.1 NM**

**1.1 NM**

CATEGORY	A	B	C	D
S-ILS 23 *	400/24		200	(200-½)
S-LOC 23 **	620/24	420 (500-½)	620/40	420 (500-¾)
CIRCLING ***	760-1	542 (600-1)	920-2	1060-2¾
			702 (800-2)	842 (900-2¾)

WITHOUT LAST STEPDOWN FIX				
S-LOC 23 ****	640/24	440 (500-½)	640/45	440 (500-¾)

FAF to MAP 3.2 NM					
Knots	60	90	120	150	180
Min:Sec	3:12	2:08	1:36	1:17	1:04

SE-2, 11 JUN 2026 to 09 JUL 2026

SE-2, 11 JUN 2026 to 09 JUL 2026