

# ILS RWY 6 (CAT II)

MC GUIRE FLD,

(JOINT BASE MC GUIRE DIX LAKEHURST) (KWRI)

LOC I-WRI <b>110.1</b>	APCH CRS <b>058°</b>	Rwy Idg <b>11,009</b> TDZE <b>131</b> Arprt Elev <b>141</b>
---------------------------	-------------------------	---

[USAF]

RADAR or DME required to identify the FAF.

ALSF-2

MISSED APPROACH: Climb to 2000 via GXU R-059 to DAYYO and hold. Alternate Missed Approach instructions: Climb to 2000 via GXU R-059 to DAYYO, expect further clearance from ATC.

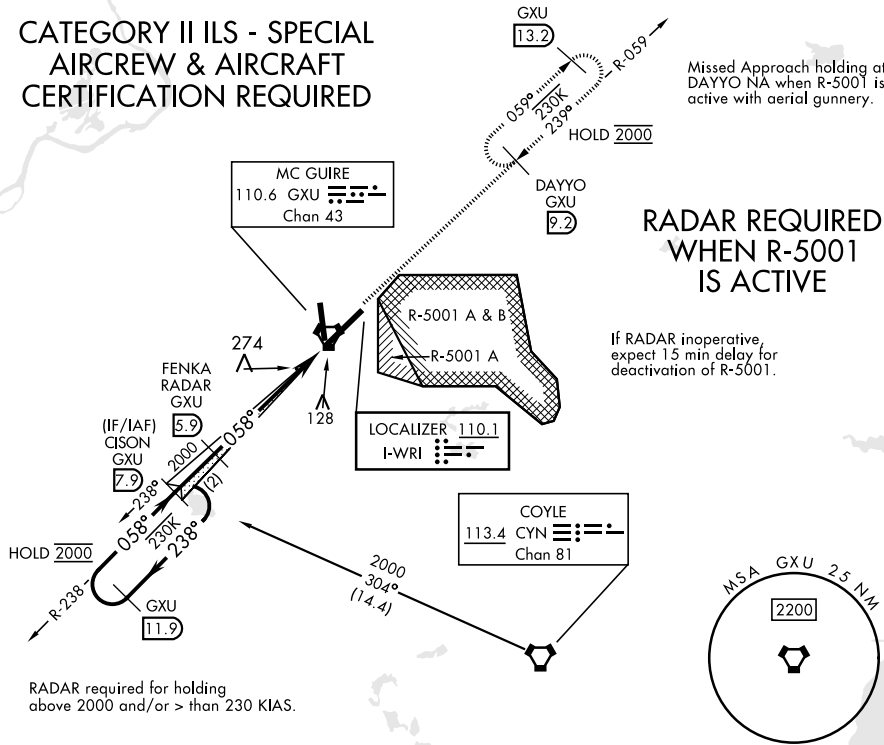
ATIS <b>110.6 270.1</b>	MC GUIRE APP CON/DEP CON <b>126.475 363.8</b>	TOWER <b>118.65 255.6</b>	GND CON <b>121.8 275.8</b>	PAR
----------------------------	--	------------------------------	-------------------------------	-----

## CATEGORY II ILS - SPECIAL AIRCREW & AIRCRAFT CERTIFICATION REQUIRED

Missed Approach holding at DAYYO NA when R-5001 is active with aerial gunnery.

### RADAR REQUIRED WHEN R-5001 IS ACTIVE

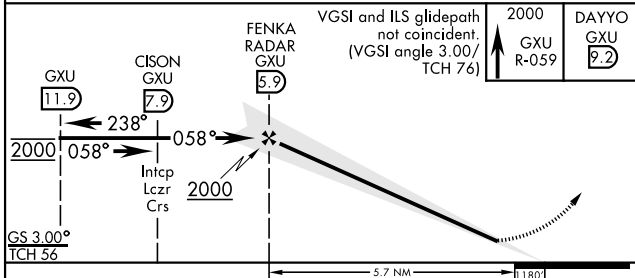
If RADAR inoperative, expect 15 min delay for deactivation of R-5001.



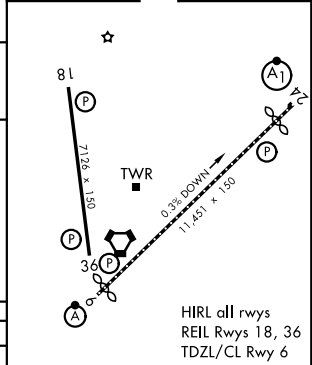
NE-2, 11 JUN 2026 to 09 JUL 2026

NE-2, 11 JUN 2026 to 09 JUL 2026

EMERG SAFE ALT 100 NM 5100



ELEV	141	TDZE	131
------	-----	------	-----



CATEGORY	A	B	C	D	E
S-ILS 6		RA 91/12	100	DA 231	

# ILS RWY 6 (CAT II)