

# ILS or LOC RWY 6

MC GUIRE FLD,

(JOINT BASE MC GUIRE DIX LAKEHURST) (KWRI)

LOC I-WRI <b>110.1</b>	APCH CRS <b>058°</b>	Rwy Idg <b>11,009</b> TDZE <b>131</b> Arprt Elev <b>141</b>
---------------------------	-------------------------	---

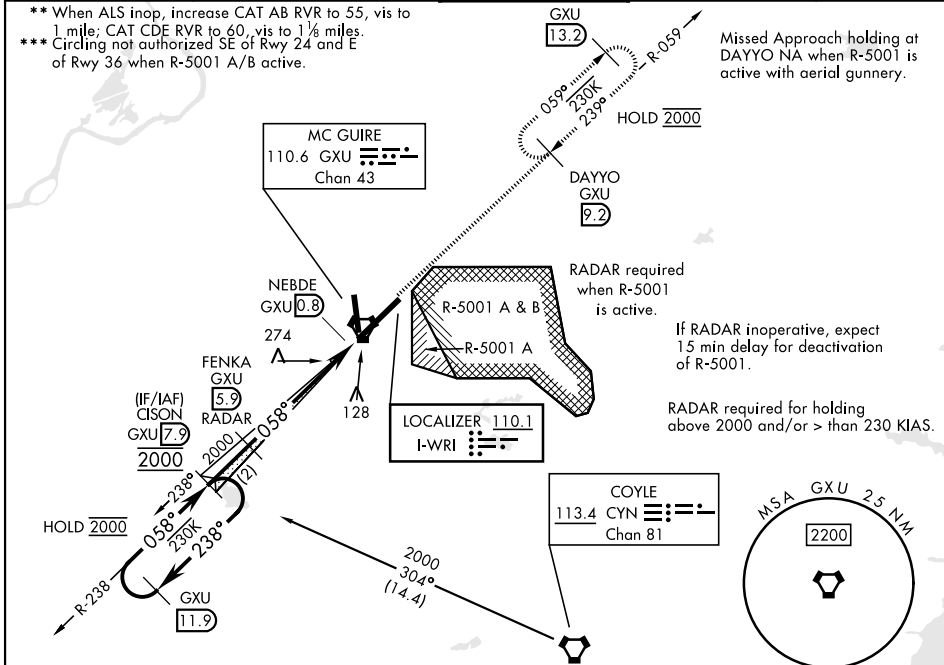
[USAF]

RADAR or DME required to identify the FAF.  
 \* When TDZL/CL inop, increase RVR to 24; RVR 18 still authorized with use of FD or AP or HUD to DA. When ALS inop, increase RVR to 40, vis to ¼ mile.

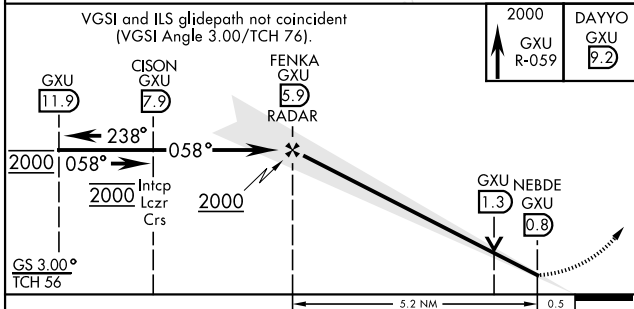


MISSED APPROACH: Climb to 2000 via GXU R-059 to DAYYO and hold.  
 Alternate Missed Approach Instruction: Climb to 2000 via GXU R-059 to DAYYO, expect further clearance from ATC.

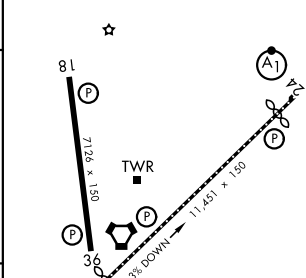
ATIS <b>110.6 270.1</b>	MC GUIRE APP CON/DEP CON <b>126.475 363.8</b>	TOWER <b>118.65 255.6</b>	GND CON <b>121.8 275.8</b>	PAR
----------------------------	--	------------------------------	-------------------------------	-----



EMERG SAFE ALT 100 NM 5100



ELEV	141	TDZE	131
------	-----	------	-----



CATEGORY	A	B	C	D	E
S-ILS 6 *	331/18		200	(200-½)	
S-LOC 6 **	540/24	409 (400-½)	540/40	409	(400-¾)
CIRCLING ***	680-1	539 (600-1)	700-1½ 559 (600-1½)	700-2 559 (600-2)	1200-3 1059 (1100-3)

FAF to MAP 5.2 NM					
Knots	60	90	120	150	180
Min:Sec	5:12	3:28	2:36	2:05	1:44

# ILS or LOC RWY 6

NE-2, 11 JUN 2026 to 09 JUL 2026

NE-2, 11 JUN 2026 to 09 JUL 2026