

MANTA TWO DEPARTURE (RNAV)

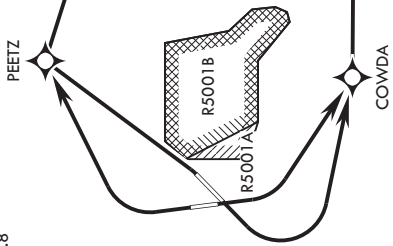
-(USAF)

WRIGHTSTOWN, NEW JERSEY

NE-2, 11 JUN 2026 to 09 JUL 2026

RNAV1-GPS

ATIS 110.6 270.1
 CLNC DEL 135.2 335.8
 GND CON 121.8 275.8
 TOWER 118.65 255.6
 MC GUIRE APP CON/DEP CON
 126.475 363.8



RADAR REQUIRED for Rwy 6 dept when
 R-5001 is active. If RADAR inoperative, expect
 15 min delay for deactivation of R-5001.
 Rwy 18 and 24 departures not authorized
 when R-5001 is active with aerial gunnery.

DEPARTURE ROUTE DESCRIPTION

- ▼ TAKEOFF RWY 06: Climb direct PEETZ, thence...
- TAKEOFF RWY 18: Climbing left turn direct COWDA, thence...
- TAKEOFF RWY 24: Climbing left turn direct COWDA, thence...
- TAKEOFF RWY 36: Climbing right turn direct PEETZ, thence...
- ...track and climb as depicted. Maintain 6000 or higher as assigned.

MANTA TWO DEPARTURE (RNAV)

Amdt 3 15MAY25

WRIGHTSTOWN, NEW JERSEY

MC GUIRE FLD (JOINT BASE MC GUIRE DIX LAKEHURST) (KWRI)

NE-2, 11 JUN 2026 to 09 JUL 2026