

WRIGHTSTOWN, NEW JERSEY

RNAV (GPS) RWY 18

APCH CRS	Rwy Idg	7126
185°	TDZE	123
	Arprt Elev	141

(USAF)

MC GUIRE FIELD (JOINT BASE MC GUIRE DIX LAKEHURST) (KWRI)

▼ * Circling NA SE of Rwy 24 and E of Rwy 36 when R-5001 A/B Active. MISSED APPROACH: Climb to 2000 direct KRIZZ and hold.

ATIS 110.6 270.1	MC GUIRE APP CON/DEP CON 126.475 363.8	TOWER 118.65 255.6	GND CON 121.8 275.8	PAR
---------------------	---	-----------------------	------------------------	-----

DME/DME RNP-0.3 NA

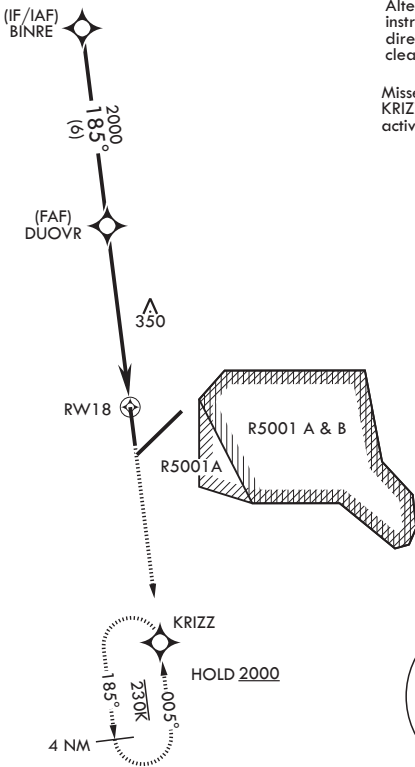
RADAR required when R-5001 is active and/or R-5002 is active.

RADAR required for holding above 2000 and/or > 230 KIAS.

If RADAR inoperative, expect 15 min delay for deactivation of R-5001 and/or R-5002.

Alternate Missed Approach instructions: Climb to 2000 direct KRIZZ, expect further clearance from ATC.

Missed approach holding at KRIZZ NA when R-5001 is active with aerial gunnery.



EMERG SAFE ALT 100 NM 5100

BINRE		DUOVR		RWY 18		2000	KRIZZ	ELEV 141	See Supp for declared dist.	TDZE 123
2000		2000		1.3 NM to RWY 18		3.10° ≥ TCH 68		5.5 NM		
CATEGORY	A	B	C	D	E					
LNAV MDA	600-1	477 (500-1)	600-1½	477	(500-1½)					
CIRCLING*	680-1	539 (600-1)	700-1½	559 (600-1½)	700-2	1200-3	1059	(1100-3)	HIRL all rwys REIL Rwy 18 and 36 TDZL/CL Rwy 6	

NE-2, 11 JUN 2026 to 09 JUL 2026

NE-2, 11 JUN 2026 to 09 JUL 2026

WRIGHTSTOWN, NEW JERSEY

MC GUIRE FIELD (JOINT BASE MC GUIRE DIX LAKEHURST) (KWRI)

Amdt 6 18MAY23

40°01'N - 74°36'W

RNAV (GPS) RWY 18