

WRIGHTSTOWN, NEW JERSEY

RNAV (GPS) RWY 36

(USAF)

MC GUIRE FIELD (JOINT BASE MC GUIRE DIX LAKEHURST) (KWRI)

APCH CRS 005°	Rwy Idg 7126	TDZE 129
	Arprt Elev 141	

▼ * Circling NA SE of Rwy 24 and E of Rwy 36 when R-5001 A/B Active. MISSED APPROACH: Climb to 2000 direct DUOVR, then turn right direct FATBU and hold.

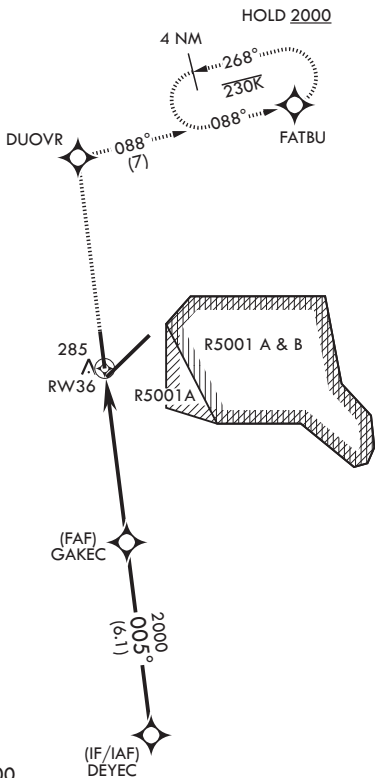
ATIS 110.6 270.1	MC GUIRE APP CON/DEP CON 126.475 363.8	TOWER 118.65 255.6	GND CON 121.8 275.8	PAR
----------------------------	--	------------------------------	-------------------------------	-----

DME/DME RNP-0.3 NA

RADAR required when R-5001 is active.

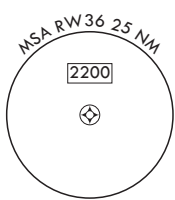
RADAR required for holding above 2000 and/or > 230 KIAS.

If RADAR inoperative, expect 15 min delay for deactivation of R-5001.

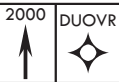


Alternate Missed Approach instructions: Climb to 2000 direct DUOVR, expect further clearance from ATC.

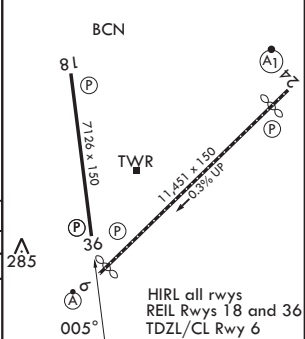
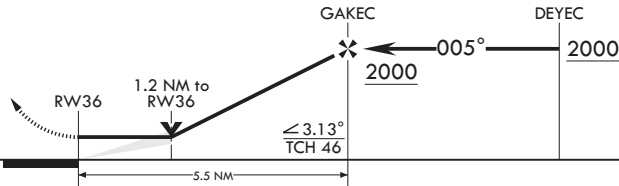
Missed approach holding at FATBU NA when R-5001 is active with aerial gunnery.



EMERG SAFE ALT 100 NM 5100



ELEV 141	See Supp for declared dist.	TDZE 129
----------	-----------------------------	----------



CATEGORY	A	B	C	D	E
LNAV MDA	560-1	431 (500-1)	560-1¼	431 (500-1¼)	
CIRCLING*	680-1	539 (600-1)	700-1½ 559 (600-1½)	700-2 559 (600-2)	1200-3 1059 (1100-3)

WRIGHTSTOWN, NEW JERSEY

MC GUIRE FIELD (JOINT BASE MC GUIRE DIX LAKEHURST) (KWRI)

Amdt 6 18MAY23

40°01'N - 74°36'W

RNAV (GPS) RWY 36

NE-2, 11 JUN 2026 to 09 JUL 2026

NE-2, 11 JUN 2026 to 09 JUL 2026