

# VOR/DME or TACAN RWY 18

MC GUIRE FLD,

(JOINT BASE MC GUIRE DIX LAKEHURST) (KWRI)

VORTAC GXU <b>110.6</b> Chan <b>43</b>	APCH CRS <b>179°</b>	Rwy Ildg TDZE Arpt Elev <b>7126</b> <b>123</b> <b>141</b>
----------------------------------------------	-------------------------	--------------------------------------------------------------------------

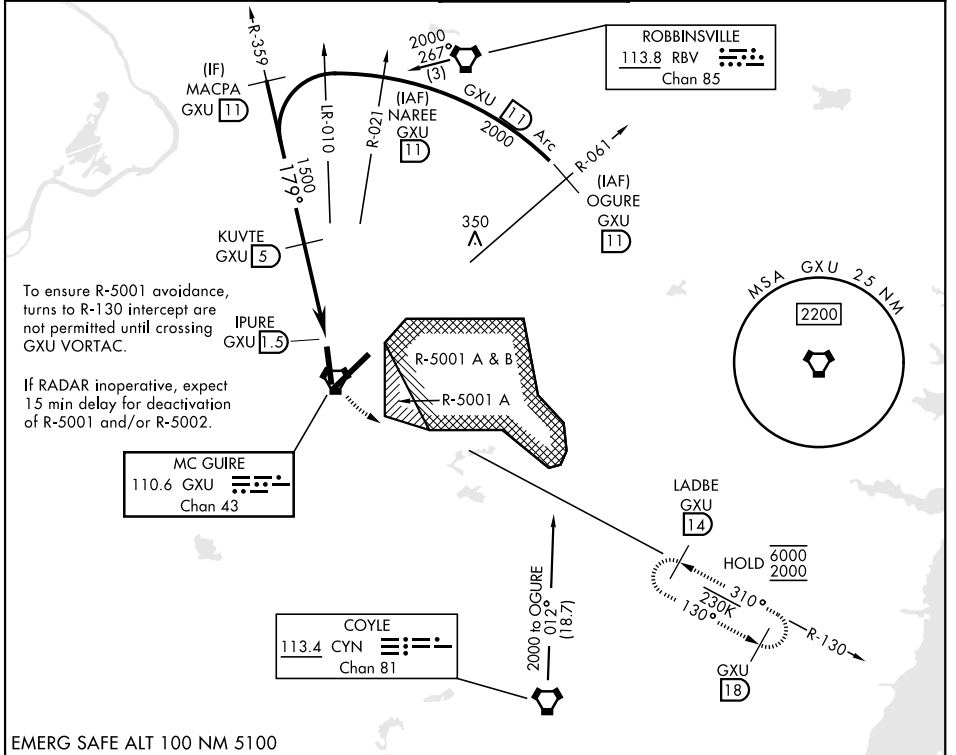
[USAF]

RADAR required when R-5001 and/or R-5002 is active.

MISSED APPROACH: Climb to 2000 via GXU VORTAC R-130 to LADBE and hold, DO NOT turn prior to GXU.

\* Circling NA SE of RWY 24 and E of RWY 36 when R-5001 A/B active.

ATIS <b>110.6 270.1</b>	MC GUIRE APP CON/DEP CON <b>126.475 363.8</b>	TOWER <b>118.65 255.6</b>	GND CON <b>121.8 275.8</b>	PAR
----------------------------	--------------------------------------------------	------------------------------	-------------------------------	-----



To ensure R-5001 avoidance, turns to R-130 intercept are not permitted until crossing GXU VORTAC.

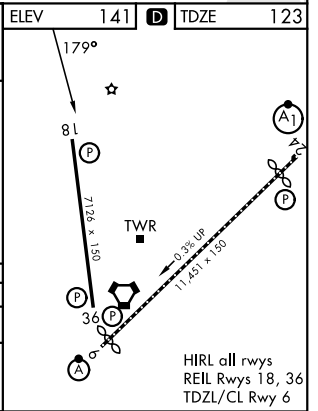
If RADAR inoperative, expect 15 min delay for deactivation of R-5001 and/or R-5002.

NE-2, 11 JUN 2026 to 09 JUL 2026

NE-2, 11 JUN 2026 to 09 JUL 2026

EMERG SAFE ALT 100 NM 5100

	OGURE R-061 GXU 11	NAREE R-021 GXU 11	MACPA R-359 GXU 11	KUVTE GXU 5	IPURE GXU 1.5	LADBE GXU 14	ELEV 141	TDZE 123
	2000		2000		179°	2000		
	2000		2000		3.18°	1500		
	GXU 11 Arc		TCH 68					
			3.5 NM		0.4			
CATEGORY	A	B	C	D	E			
S-18	640-1	517 (500-1)	640-1½	517 (500-1½)				
CIRCLING *	680-1	539 (600-1)	700-1½ 559 (600-1½)	700-2 559 (600-2)	1200-3 1059 (1100-3)			



HIRL all rwys  
REIL Rwy 18, 36  
TDZL/CL Rwy 6

# VOR/DME or TACAN RWY 18