

WRIGHTSTOWN, NEW JERSEY

# VOR/DME or TACAN RWY 24

VORTAC GXU 110.6 Chan 43	APCH CRS 243°	Rwy ldg TDZE Arprt Elev	10,456 117 141
--------------------------------	------------------	-------------------------------	----------------------

(USAf)

MC GUIRE FIELD (JOINT BASE MC GUIRE DIX LAKEHURST) (KWRI)

**V** \* When ALS inop, increase CAT AB RVR to 55 and vis to 1 mile, CAT CDE vis to 1 1/2 miles.  
 \*\* Circling NA SE of Rwy 24 and E of Rwy 36 when R-5001 A/B Active.

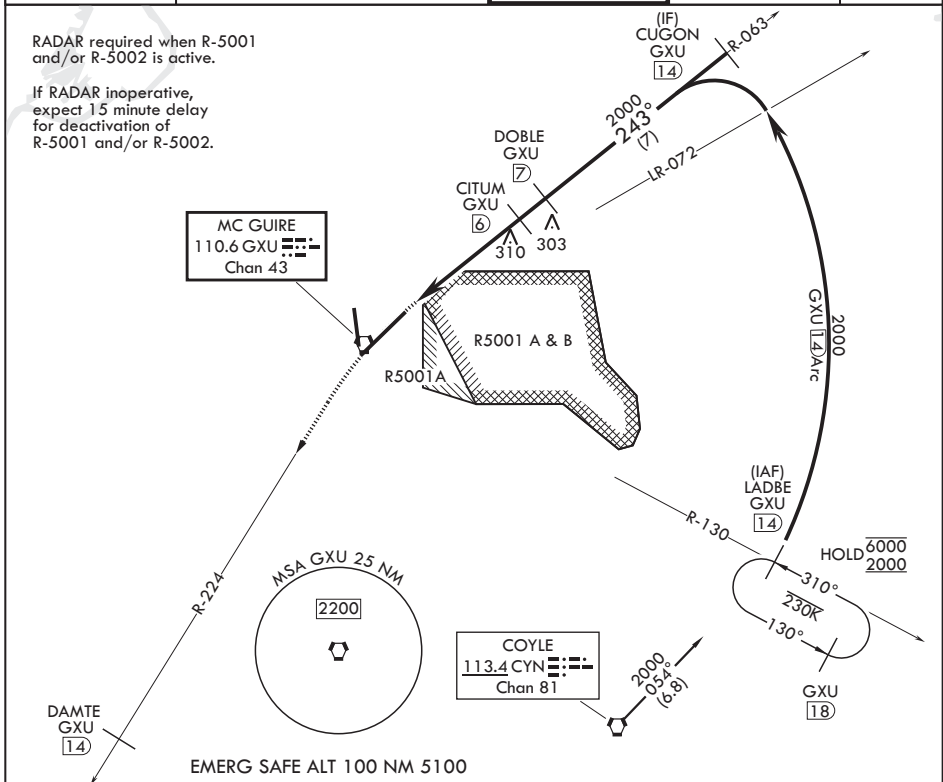


MISSED APPROACH: Climb to 2000 via GXU R-224 to DAMTE, Expect further clearance from ATC.

ATIS 110.6 270.1	MC GUIRE APP CON/DEP CON 126.475 363.8	TOWER 118.65 255.6	GND CON 121.8 275.8	PAR
---------------------	---	-----------------------	------------------------	-----

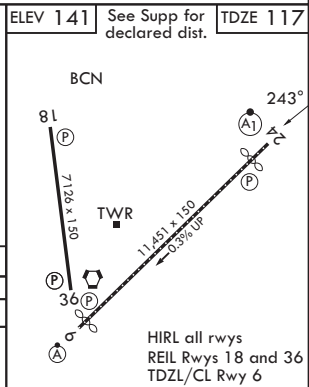
RADAR required when R-5001 and/or R-5002 is active.

If RADAR inoperative, expect 15 minute delay for deactivation of R-5001 and/or R-5002.



EMERG SAFE ALT 100 NM 5100

2000 GXU R-224	DAMTE GXU 14	DOBLE 7	CITUM 6	CUGON 14	
VORTAC	LAYEG 2	2.7	1600	2000	
0.6		4 NM		1 NM	
CATEGORY	A	B	C	D	E
S-24*	640/24	523 (500-1/2)	640/55	523	(500-1)
CIRCLING**	680-1	539 (600-1)	700-1 1/2 559 (600-1/2)	700-2 559 (600-2)	1200-3 1059 (1100-3)



HIRL all rwys  
REIL Rwy 18 and 36  
TDZL/CL Rwy 6

WRIGHTSTOWN, NEW JERSEY

MC GUIRE FIELD (JOINT BASE MC GUIRE DIX LAKEHURST) (KWRI)

Amdt 8 18MAY23

40°01'N - 74°36'W

# VOR/DME or TACAN RWY 24

NE-2, 11 JUN 2026 to 09 JUL 2026

NE-2, 11 JUN 2026 to 09 JUL 2026