

WRIGHTSTOWN, NEW JERSEY

# VOR/DME or TACAN RWY 36

VORTAC GXU <b>110.6</b> Chan 43	APCH CRS <b>021°</b>	Rwy Idg TDZE Arprt Elev	<b>7126</b> <b>129</b> <b>141</b>
---------------------------------------	-------------------------	-------------------------------	---

(USAF)

MC GUIRE FIELD (JOINT BASE MC GUIRE DIX LAKEHURST) (KWRI)

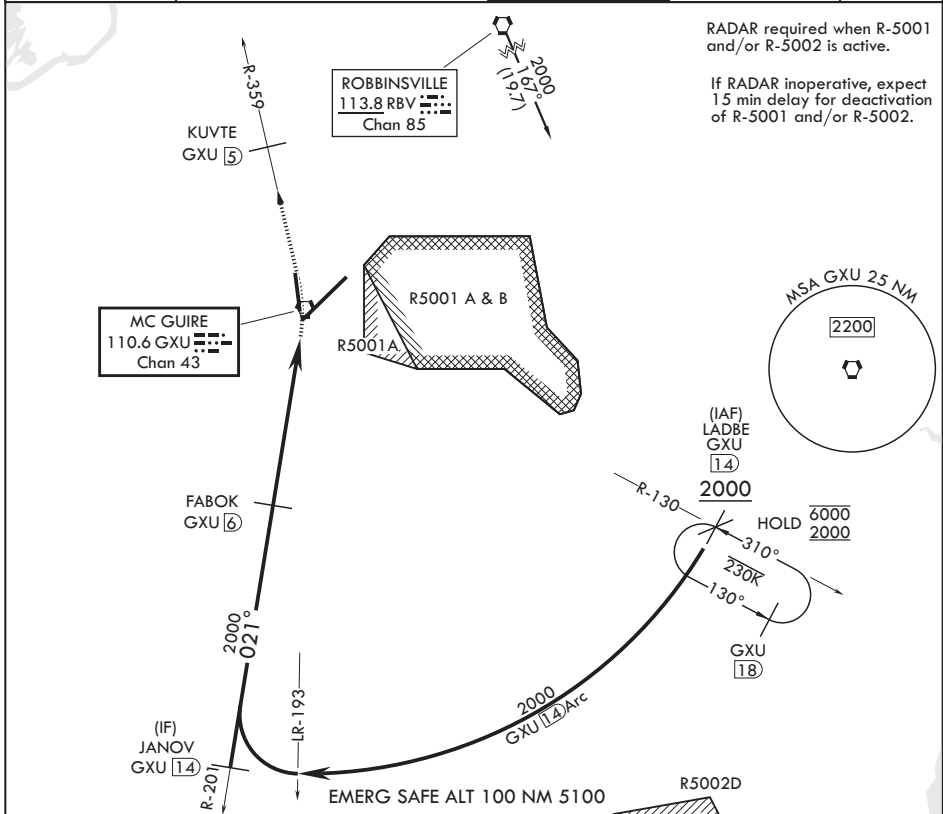
**▼** \* Circling NA SE of Rwy 24 and E of Rwy 36 when R-5001 A/B Active.

MISSED APPROACH: Climb to 2000 via GXU R-359 to KUVTE, expect further clearance with ATC.

ATIS <b>110.6 270.1</b>	MC GUIRE APP CON/DEP CON <b>126.475 363.8</b>	TOWER <b>118.65 255.6</b>	GND CON <b>121.8 275.8</b>	PAR
----------------------------	--	------------------------------	-------------------------------	-----

RADAR required when R-5001 and/or R-5002 is active.

If RADAR inoperative, expect 15 min delay for deactivation of R-5001 and/or R-5002.



NE-2, 11 JUN 2026 to 09 JUL 2026

NE-2, 11 JUN 2026 to 09 JUL 2026

LADBE GXU R-130 <b>14</b> RBV <b>19.7</b>	JANOV GXU R-201 <b>14</b>	FABOK GXU <b>6</b>	GXU <b>1.4</b>	EBELE GXU <b>9</b>	GXU VORTAC	See Supp for declared dist.	TDZE <b>129</b>
--	------------------------------	-----------------------	----------------	-----------------------	------------	-----------------------------	-----------------

2000	2000	2000	2000	2000	2000	2000
GXU <b>1.4</b> Arc		2.92° ≥ TCH 46		5.1 NM		0.8

CATEGORY	A	B	C	D	E
S-36	600-1	471 (500-1)	600-1½	471	(500-1½)
CIRCLING*	680-1	539 (600-1)	700-1½ 559 (600-1½)	700-2 559 (600-2)	1200-3 1059 (1100-3)

BCN

HIRL all rws  
REIL Rws 18 and 36  
TDZL/CL Rwy 6

WRIGHTSTOWN, NEW JERSEY

MC GUIRE FIELD (JOINT BASE MC GUIRE DIX LAKEHURST) (KWRI)

Amdt 7 18MAY23

40°01'N - 74°36'W

# VOR/DME or TACAN RWY 36