

FORT RILEY, KANSAS

ILS or LOC RWY 4

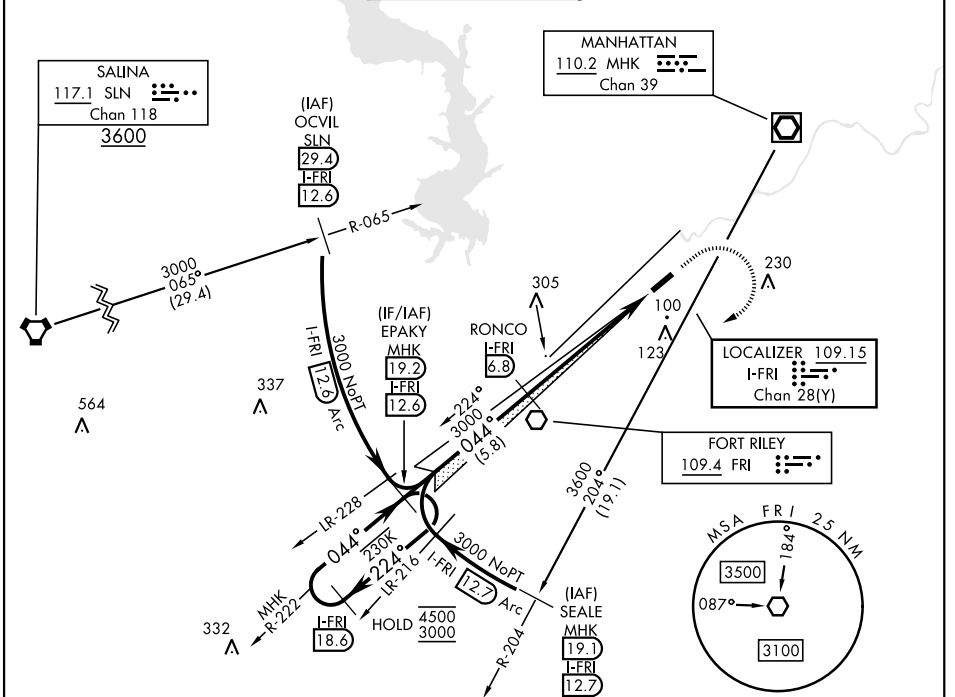
LOC/DME I-FRI 109.15 Chan 28(Y)	APCH CRS 044°	Rwy Ldg THRE 1065 Arprt Elev 1066
---	-------------------------	---

[USA]

MARSHALL AAF (KFRI)

RADAR required	ODALS	MISSED APPROACH: Climb to 1500 then climbing right turn to 3000 heading 230° expect radar vectors to EPACY and hold.
----------------	-------	--

ATIS ★ 121.025	APP CON 121.25 269.05	TOWER ★ 126.2 (CTAF) 0 248.65	GND CON 140.20 229.4	CLNC DEL 119.65
--------------------------	---------------------------------	---	--------------------------------	---------------------------

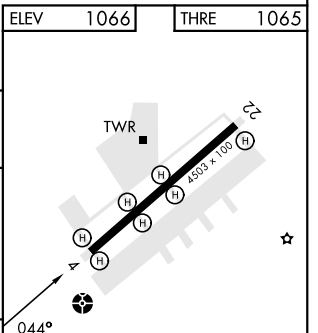
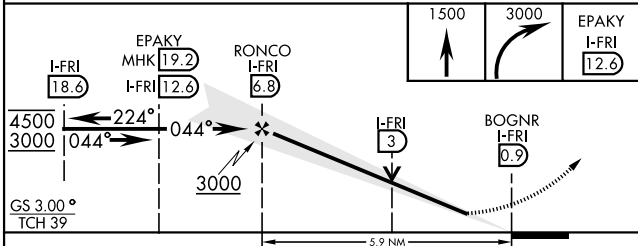


NC-2, 11 JUN 2026 to 09 JUL 2026

NC-2, 11 JUN 2026 to 09 JUL 2026

ELEV	1066	THRE	1065
------	------	------	------

EMERG SAFE ALT 100 NM 4000



CATEGORY	A	B	C	D
S-ILS 4	1341-1	276	(300-1)	
S-LOC 4	1800-1	735 (800-1)	1800-2	735 (800-2)
CIRCLING*	1800-1	734 (800-1)	734 (800-2)	834 (900-2¾)

HIRL Rwy 4-22 0

FORT RILEY, KANSAS

39° 03' N - 96° 46' E

MARSHALL AAF (KFRI)

Orig 20FEB25

ILS or LOC RWY 4