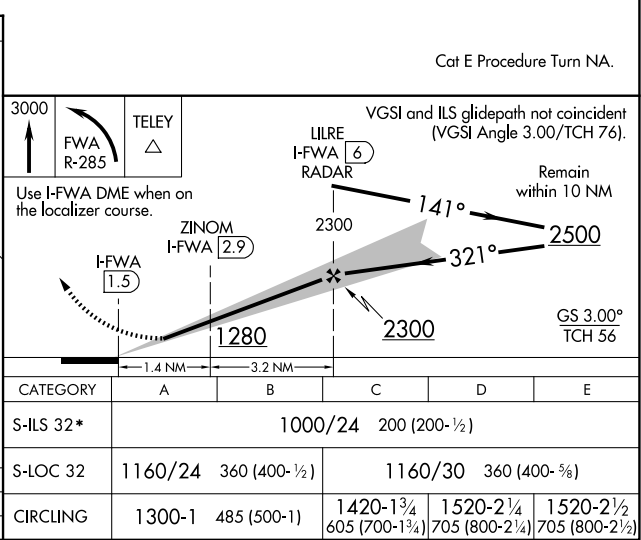
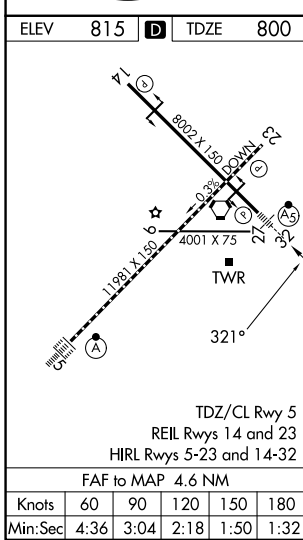
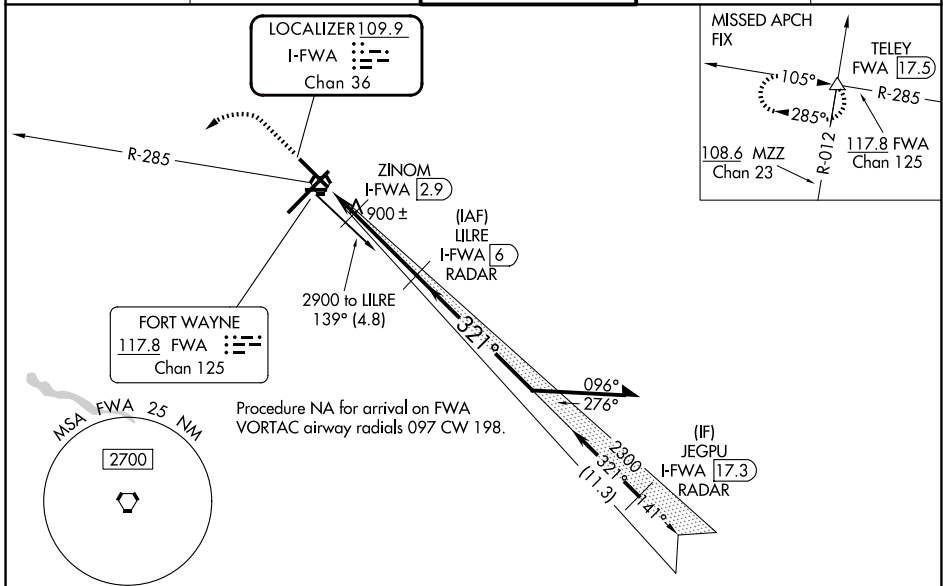


LOC/DME I-FWA <b>109.9</b> Chan 36	APP CRS <b>321°</b>	Rwy Ldg TDZE Apt Elev	<b>8001</b> <b>800</b> <b>815</b>
--	------------------------	-----------------------------	---

# ILS or LOC RWY 32

FORT WAYNE INTL (FWA)

DME required for LOC only. DME or RADAR required for procedure entry.		MALSR 	MISSED APPROACH: Climb to 3000 then left turn on FWA VORTAC R-285 to TELEY INT/FWA 17.5 DME and hold.	
 For inop ALS, increase S-ILS 32 visibility Cat E to RVR 4000 and increase S-LOC 32 visibility Cats C, D, and E to RVR 5500. ASR * RVR 1800 authorized with use of FD or AP or HUD to DA.				
ATIS <b>121.25 360.825</b>	FORT WAYNE APP CON <b>127.2 284.6</b>	FORT WAYNE TOWER <b>119.1 269.325</b>	GND CON <b>121.9 348.6</b>	CLNC DEL <b>124.75</b>



EC-2, 11 JUN 2026 to 09 JUL 2026

EC-2, 11 JUN 2026 to 09 JUL 2026