


WAAS CH 82417 W32A	APP CRS 321°	Rwy Ldg TDZE Apt Elev	8001 800 815
--	------------------------	-----------------------------	---

RNAV (GPS) RWY 32

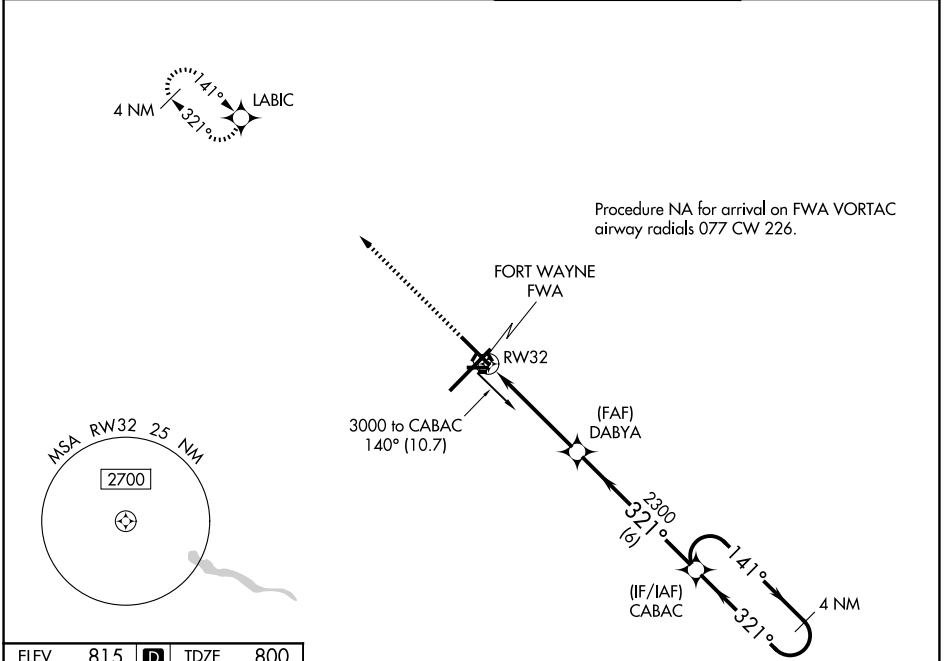
FORT WAYNE INTL (FWA)

⚠ For uncompensated Baro-VNAV systems, LNAV/VNAV NA below -16°C (4°F) or above 47°C (116°F).
⚠ DME/DME RNP-0.3 NA.
****** RVR 1800 authorized with use of FD or AP or HUD to DA.

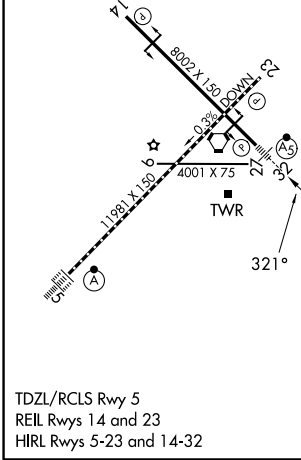
MALSR 

MISSED APPROACH: Climb to 3000 direct LABIC and hold.

ATIS 121.25 360.825	FORT WAYNE APP CON 127.2 284.6	FORT WAYNE TOWER 119.1 269.325	GND CON 121.9 348.6
-------------------------------	--	--	-------------------------------



ELEV	815	D	TDZE	800
------	------------	----------	------	------------



3000 LABIC

VGSI and RNAV glidepath not coincident (VGSI Angle 3.00/TCH 76).

4 NM Holding Pattern

*LNAV only

*1.3 NM to RWY 32

DABYA 2300

CABAC 3000

141° →

← 321°

GP 3.00° TCH 56

CATEGORY	A	B	C	D
LPV DA		**1000/24	200 (200-½)	
LNAV/VNAV DA		1250/50	450 (500-1)	
LNAV MDA	1280/24	480 (500-½)	1280/50	480 (500-1)
CIRCLING	1300-1	485 (500-1)	1420-1¾ 605 (700-1¾)	1520-2¼ 705 (800-2¼)

EC-2, 11 JUN 2026 to 09 JUL 2026

EC-2, 11 JUN 2026 to 09 JUL 2026