

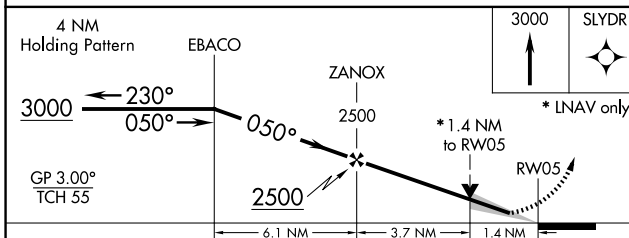
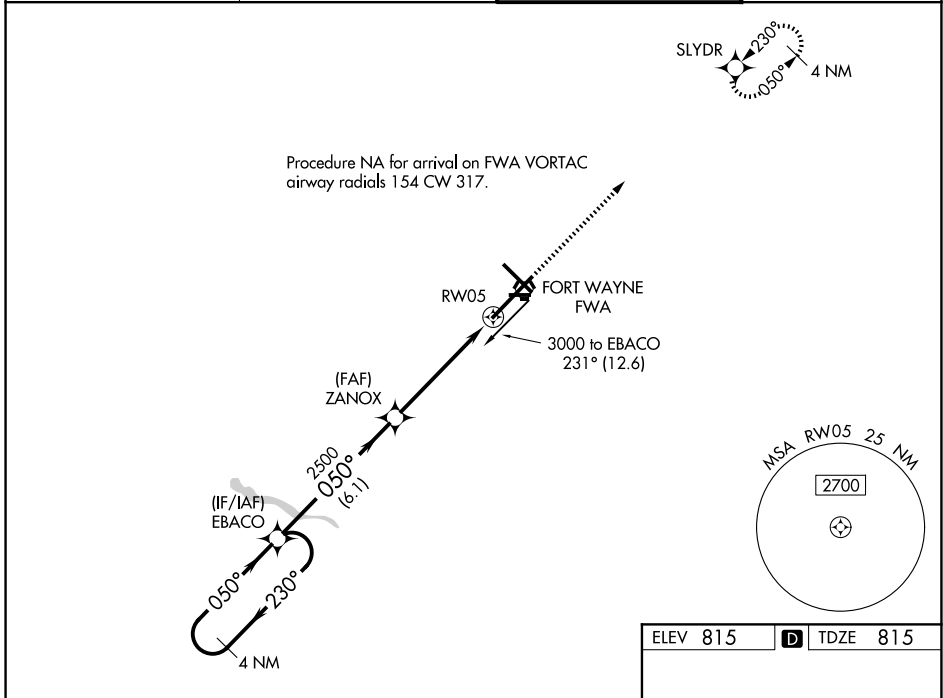
WAAS CH 93609 W05A	APP CRS 050°	Rwy Ldg 11981 TDZE 815 Apt Elev 815
--	------------------------	--

RNAV (GPS) RWY 5

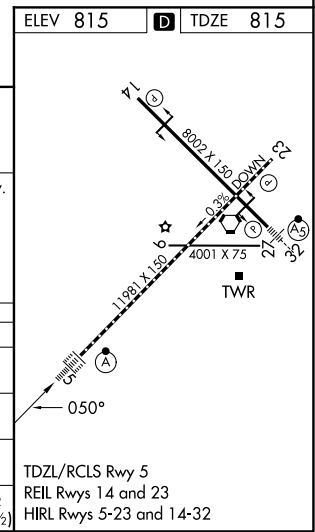
FORT WAYNE INTL (FWA)

	For uncompensated Baro-VNAV systems, procedure NA below -16°C (4°F) or above 47°C (116°F). DME/DME RNP-0.3 NA. For inop ALS, increase LPV Cat E visibility to RVR 4000, LNAV/VNAV all Cats visibility to 1½ SM and LNAV Cat C/D/E visibility to 1¾ SM.	ALSF-2 	MISSED APPROACH: Climb to 3000 direct SLYDR and hold.
	Procedure NA for arrival on FWA VORTAC airway radials 154 CW 317.		

ATIS 121.25 360.825	FORT WAYNE APP CON 127.2 284.6	FORT WAYNE TOWER 119.1 269.325	GND CON 121.9 348.6
-------------------------------	--	--	-------------------------------



CATEGORY	A	B	C	D	E
LPV DA		1065/18	250 (300-½)		
LNAV/VNAV DA		1275/60	460 (500-1¼)		
LNAV MDA	1300/24	485 (500-½)	1300/50	485 (500-1)	
CIRCLING	1300-1	485 (500-1)	1420-1¾ 605 (700-1¾)	1520-2¼ 705 (800-2¼)	1520-2½ 705 (800-2½)



EC-2, 11 JUN 2026 to 09 JUL 2026

EC-2, 11 JUN 2026 to 09 JUL 2026