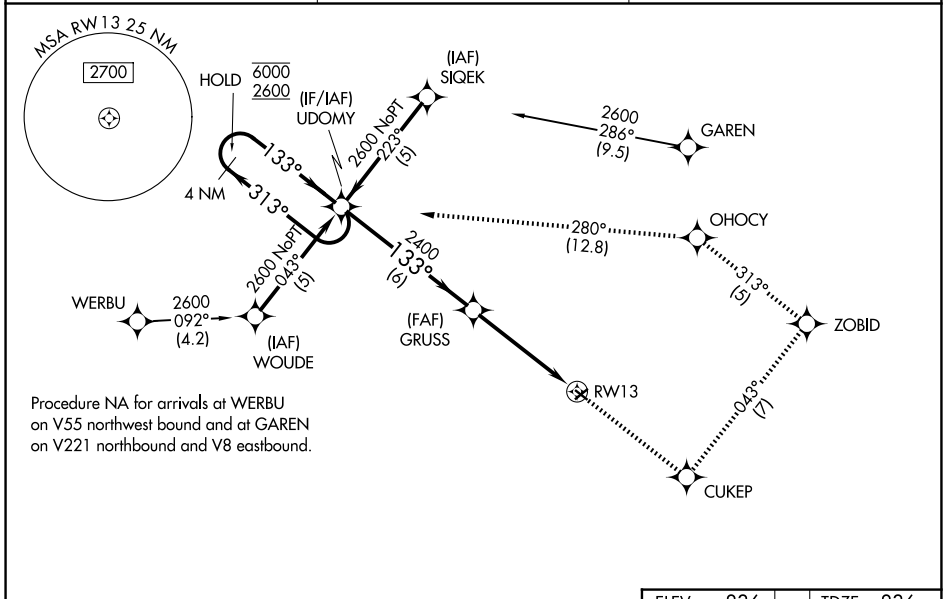


WAAS CH 69220 W13A	APP CRS 133°	Rwy Ldg TDZE Apt Elev	2623 836 836
--	------------------------	-----------------------------	---

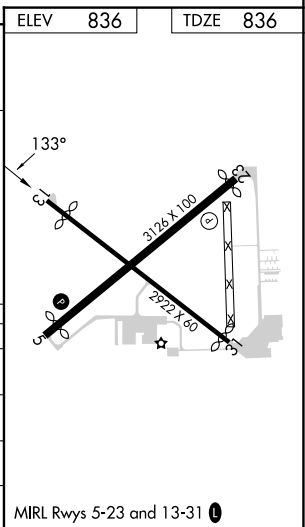
RNAV (GPS) RWY 13

SMITH FLD (SMD)

RNP APCH.	<p>Procedure NA at night. Rwy 13 helicopter visibility reduction below 1 SM NA.</p> <p>⚠ NA For uncompensated Baro-VNAV systems, LNAV/VNAV NA below -16°C or above 54°C. When local altimeter setting not received, use Fort Wayne Intl altimeter setting: -21°C</p> <p>increase LPV DA to 1162 feet; LNAV/VNAV DA to 1435 feet; increase all MDA 40 feet and LNAV Cat C visibility ¼ SM. Baro-VNAV NA when using Fort Wayne Intl altimeter setting.</p>	MISSED APPROACH: Climb to 2600 direct CUKEP and on track 043° to ZOBID and on track 313° to OHOCY and on track 280° to UDOMY and hold.
AWOS-3 124.55	FORT WAYNE APP CON 127.2 284.6	UNICOM 122.8 (CTAF) 0



	2600	CUKEP	ZOBID	OHOCY	UDOMY
	↑	✧	✧	✧	✧
		tr 043°	tr 313°	tr 280°	
4 NM Holding Pattern	UDOMY				
6000 ← 313°	GRUSS 2400				
2600 → 133°	RWY 13				
GP 3.00°	2400				
TCH 40	6 NM 4.7 NM				
CATEGORY	A	B	C	D	
LPV DA		1135-1	299 (300-1)		NA
LNAV/VNAV DA		1408-2	572 (600-2)		NA
LNAV MDA	1340-1	504 (600-1)	1340-1½ 504 (600-1½)		NA
CIRCLING	1400-1	564 (600-1)	1940-3 1104 (1200-3)		NA



EC-2, 11 JUN 2026 to 09 JUL 2026

EC-2, 11 JUN 2026 to 09 JUL 2026