

RNAV (GPS) RWY 31

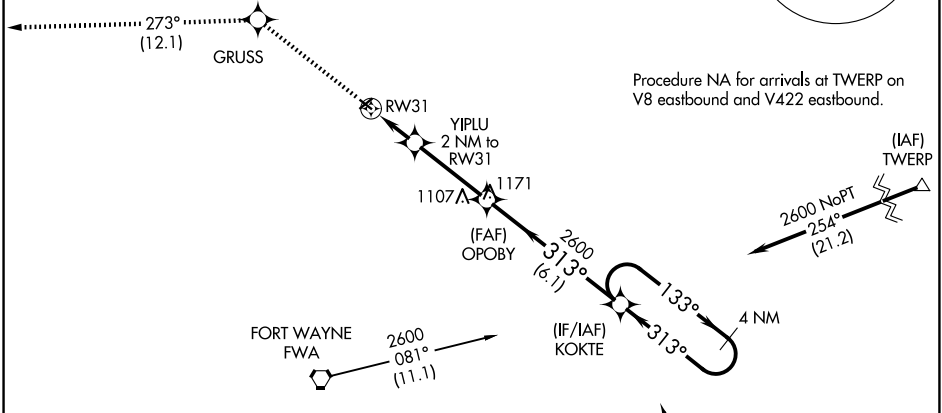
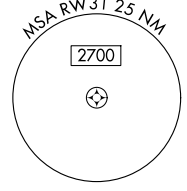
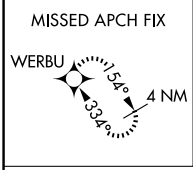
SMITH FLD (SMD)

WAAS CH 77638 W31A	APP CRS 313°	Rwy Ldg 2821 TDZE 836 Apt Elev 836
--	------------------------	---

⚠ Rwy 31 helicopter visibility reduction below 1 SM NA. DME/DME RNP-0.3 NA.
⚠ NA Procedure NA at night. When local altimeter setting not received, use Fort Wayne Intl altimeter setting and increase all MDA 40 feet, LP Cat C visibility 1/2 SM and LNAV Cat C visibility 1/8 SM.

MISSED APPROACH: Climb to 2700 direct GRUSS and on track 273° to WERBU and hold.

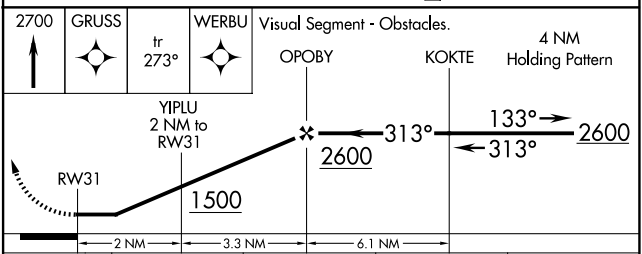
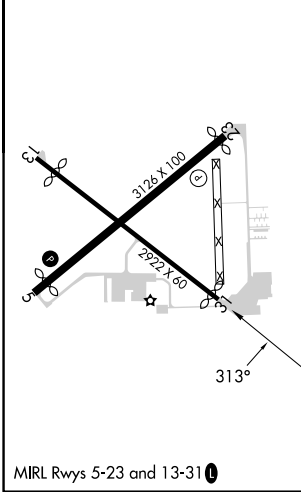
AWOS-3 124.55	FORT WAYNE APP CON 127.2 284.6	UNICOM 122.8 (CTAF) 0
-------------------------	--	---------------------------------



Procedure NA for arrivals at TWERP on V8 eastbound and V422 eastbound.

Procedure NA for arrival on FWA VORTAC airway radials 022 CW 174.

ELEV 836	TDZE 836
----------	----------



CATEGORY	A	B	C	D
LP MDA	1240-1	404 (500-1)	1240-1 1/8 404 (500-1 1/8)	NA
LNAV MDA	1260-1	424 (500-1)	1260-1 1/4 424 (500-1 1/4)	NA
CIRCLING	1400-1	564 (600-1)	1940-3 1104 (1200-3)	NA

EC-2, 11 JUN 2026 to 09 JUL 2026

EC-2, 11 JUN 2026 to 09 JUL 2026