

KUSSO THREE DEPARTURE (RNAV)  
(KUSSO3.KUSSO) 14MAY26

LONE STAR DEP CON  
118.1 306.95 (N)  
135.975 379.9 (S)  
ATIS  
120.7  
CLNC DEL  
124.65  
GND CON  
121.9  
MEACHAM TOWER  
118.3 257.8

**TAKEOFF MINIMUMS**

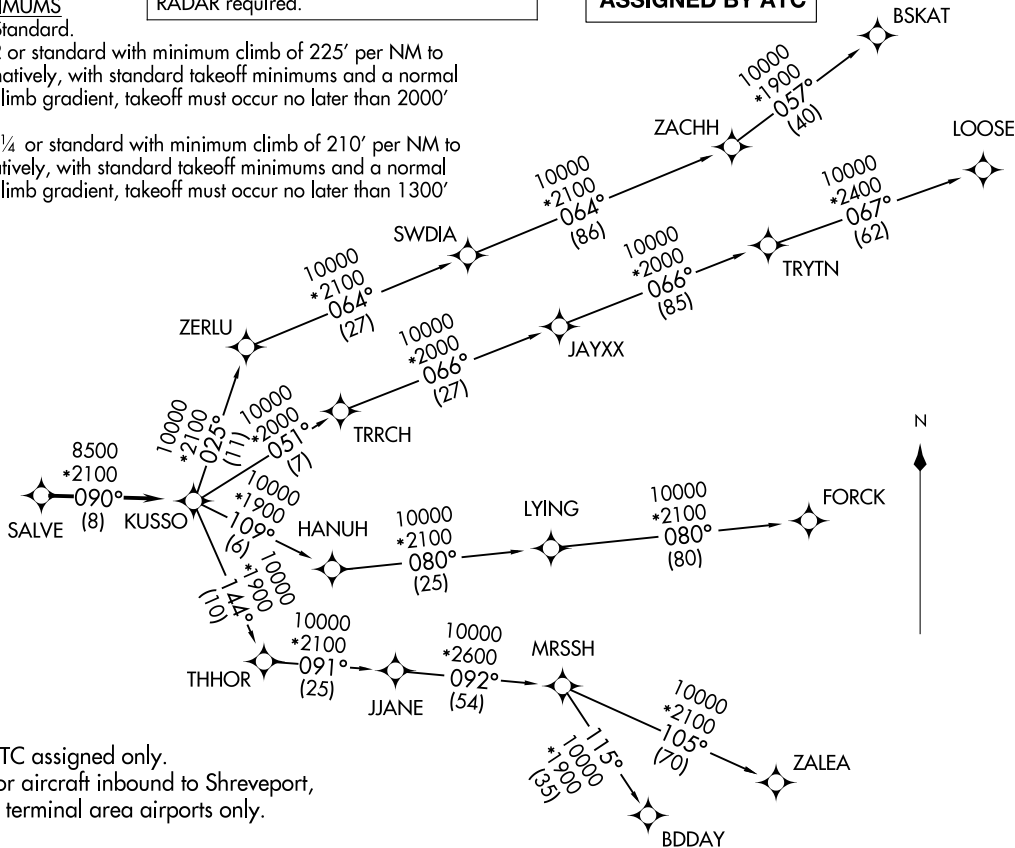
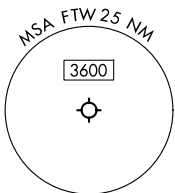
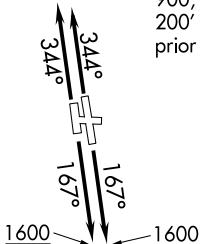
Rwys 16, 17: Standard.

Rwy 34: 300-2 or standard with minimum climb of 225' per NM to 1100, or alternatively, with standard takeoff minimums and a normal 200' per NM climb gradient, takeoff must occur no later than 2000' prior to DER.

Rwy 35: 300-1¼ or standard with minimum climb of 210' per NM to 900, or alternatively, with standard takeoff minimums and a normal 200' per NM climb gradient, takeoff must occur no later than 1300' prior to DER.

RNAV 1 - DME/DME/IRU or GPS required.  
RADAR required.

**TOP ALTITUDE:  
ASSIGNED BY ATC**



NOTE: BDDAY Transition: ATC assigned only.  
NOTE: MRSSH Transition: For aircraft inbound to Shreveport, Jackson and Monroe terminal area airports.

(CONTINUED ON FOLLOWING PAGE)

NOTE: Chart not to scale.

(KUSSO3.KUSSO) 26134  
KUSSO THREE DEPARTURE (RNAV)

AL-159 (FAA)

FORT WORTH MEACHAM INTL (FTW)  
FORT WORTH, TEXAS

FORT WORTH, TEXAS  
FORT WORTH MEACHAM INTL (FTW)

# KUSSO THREE DEPARTURE (RNAV)



## DEPARTURE ROUTE DESCRIPTION

TAKEOFF RUNWAYS 16, 17: Climb on heading 167° to 1600 before proceeding on course.

TAKEOFF RUNWAYS 34, 35: Climb on heading 344° or as assigned by ATC, thence.

When entering controlled airspace, fly heading assigned by ATC, expect RADAR vectors to SALVE, then on track 090° to KUSSO, then on assigned transition. Maintain ATC assigned altitude, expect filed altitude 10 minutes after departure.

BDDAY TRANSITION (KUSSO3.BDDAY)

BSKAT TRANSITION (KUSSO3.BSKAT)

FORCK TRANSITION (KUSSO3.FORCK)

LOOSE TRANSITION (KUSSO3.LOOSE)

MRSSH TRANSITION (KUSSO3.MRSSH)

ZALEA TRANSITION (KUSSO3.ZALEA)

SC-2, 11 JUN 2026 to 09 JUL 2026

SC-2, 11 JUN 2026 to 09 JUL 2026