

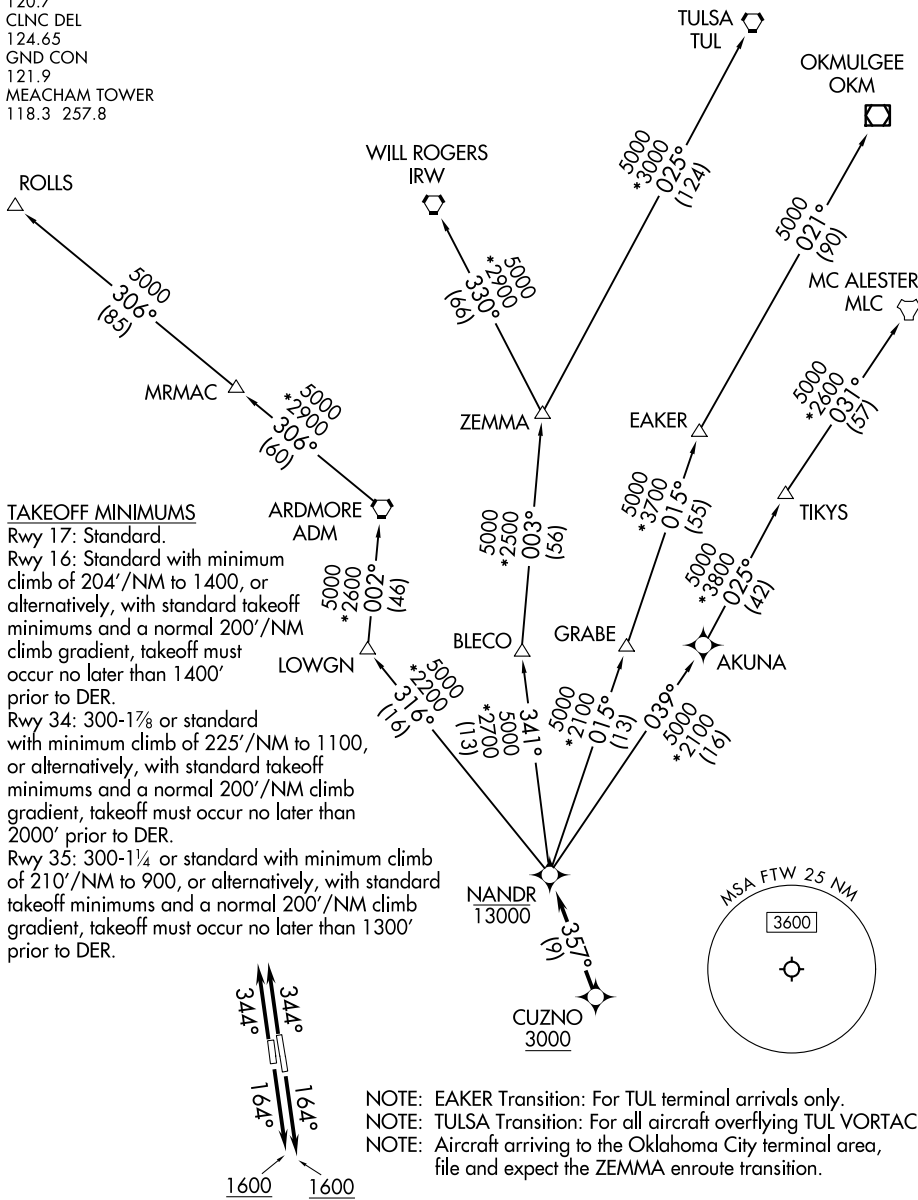
# NANDR FOUR DEPARTURE (RNAV)

FORT WORTH, TEXAS

LONE STAR DEP CON  
 118.1 306.95 (34, 35)  
 135.975 379.9 (16, 17)  
 ATIS  
 120.7  
 CLNC DEL  
 124.65  
 GND CON  
 121.9  
 MEACHAM TOWER  
 118.3 257.8

RNAV 1 - DME/DME/IRU or GPS required.  
 RADAR required.

**TOP ALTITUDE:  
 ASSIGNED BY ATC**



SC-2, 11 JUN 2026 to 09 JUL 2026

SC-2, 11 JUN 2026 to 09 JUL 2026

NOTE: Chart not to scale.

(CONTINUED ON FOLLOWING PAGE)

# NANDR FOUR DEPARTURE (RNAV)

(NANDR4.NANDR) 14MAY26

FORT WORTH, TEXAS

FORT WORTH MEACHAM INTL (FTW)

# NANDR FOUR DEPARTURE (RNAV)



## DEPARTURE ROUTE DESCRIPTION

TAKEOFF RUNWAYS 16, 17: Climb on heading 164° to 1600 before proceeding on course or as assigned by ATC, thence. . .

TAKEOFF RUNWAYS 34, 35: Climb on heading 344° or as assigned by ATC, thence. . .

. . .expect RADAR vectors to cross CUZNO at or above 3000, then on track 357° to cross NANDR at or below 13000, then on assigned transition. Maintain ATC assigned altitude, expect filed altitude 10 minutes after departure.

EAKER TRANSITION (NANDR4.EAKER)

MC ALESTER TRANSITION (NANDR4.MLC)

OKMULGEE TRANSITION (NANDR4.OKM)

ROLLS TRANSITION (NANDR4.ROLLS)

TULSA TRANSITION (NANDR4.TUL)

WILL ROGERS TRANSITION (NANDR4.IRW)

ZEMMA TRANSITION (NANDR4.ZEMMA)

SC-2, 11 JUN 2026 to 09 JUL 2026

SC-2, 11 JUN 2026 to 09 JUL 2026