

DALLAS FOUR DEPARTURE (DALL4 TTT) 27NOV25
FORT WORTH, TEXAS
FORT WORTH NAS JRB (CARSWELL FLD) (KNFW)

LONE STAR DEP CON
125.8 257.95
ATIS ★
351.675
CLNC DEL
126.4 254.325
GND CON
121.675 279.575
NAVY FORT WORTH TOWER ★
120.95 269.325

RADAR and DME required.

**TOP ALTITUDE:
ASSIGNED BY ATC**

BONHAM
114.6 BYP
Chan 93

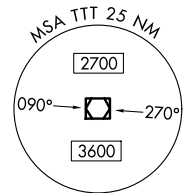
MAVERICK
113.1 TTT
Chan 78

GREGG COUNTY
112.9 GGG
Chan 76

LITTLE ROCK
115.1 LIT
Chan 98

TEXARKANA
116.3 TXK
Chan 110

BELCHER
117.4 EIC
Chan 121

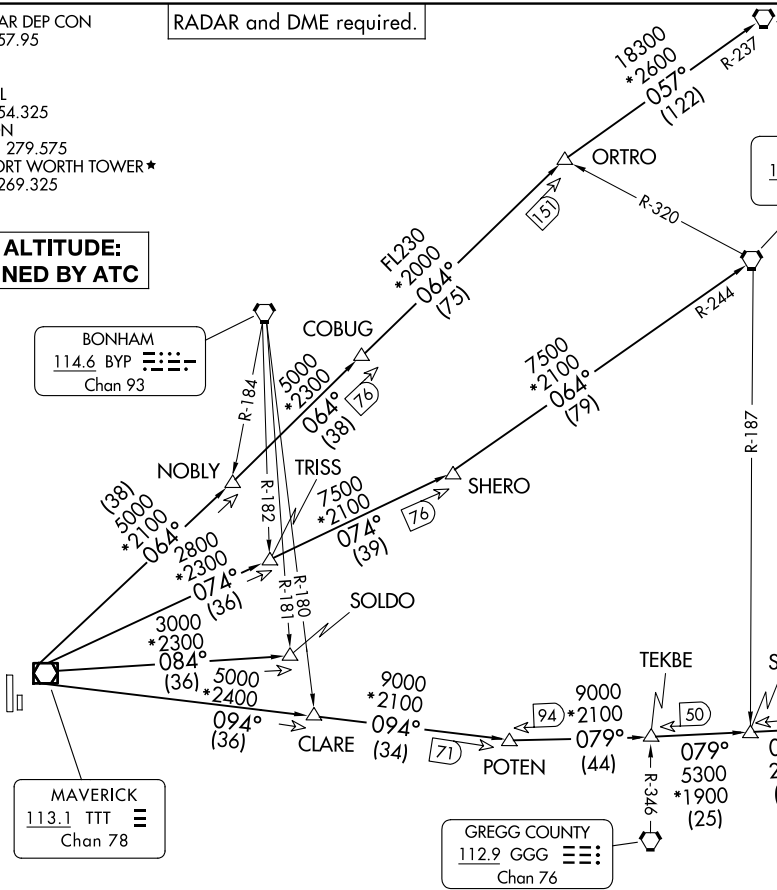


TAKEOFF MINIMUMS
Refer to appropriate military service directives.

NOTE: BELCHER Transition: For aircraft inbound to the JAN, MLU, and SHV terminal areas only.
NOTE: SOLDO Transition: ATC assigned.



(DALL4 TTT) 25331
DALLAS FOUR DEPARTURE
FORT WORTH NAS JRB (CARSWELL FLD) (KNFW)
FORT WORTH, TEXAS
AL-160 (FAA)



(CONTINUED ON FOLLOWING PAGE)

NOTE: Chart not to scale.

DALLAS FOUR DEPARTURE



DEPARTURE ROUTE DESCRIPTION

Fly assigned heading for RADAR vectors to appropriate route. Maintain ATC assigned altitude.

BELCHER TRANSITION (DALL4.EIC): From over TTT VOR/DME on TTT R-094 to POTEN, then on EIC R-259 to EIC VORTAC.

LITTLE ROCK TRANSITION (DALL4.LIT): From over TTT VOR/DME on TTT R-064 to ORTRO, then on LIT R-237 to LIT VORTAC.

SOLDO TRANSITION (DALL4.SOLDO): From over TTT VOR/DME on TTT R-084 to SOLDO.

TEXARKANA TRANSITION (DALL4.TXK): From over TTT VOR/DME on TTT R-074 to SHERO, then on TXK R-244 to TXK VORTAC.

SC-2, 11 JUN 2026 to 09 JUL 2026

SC-2, 11 JUN 2026 to 09 JUL 2026