

RNAV 1 - DME/DME/IRU or GPS required.

RADAR required.

**TOP ALTITUDE:
ASSIGNED BY ATC**

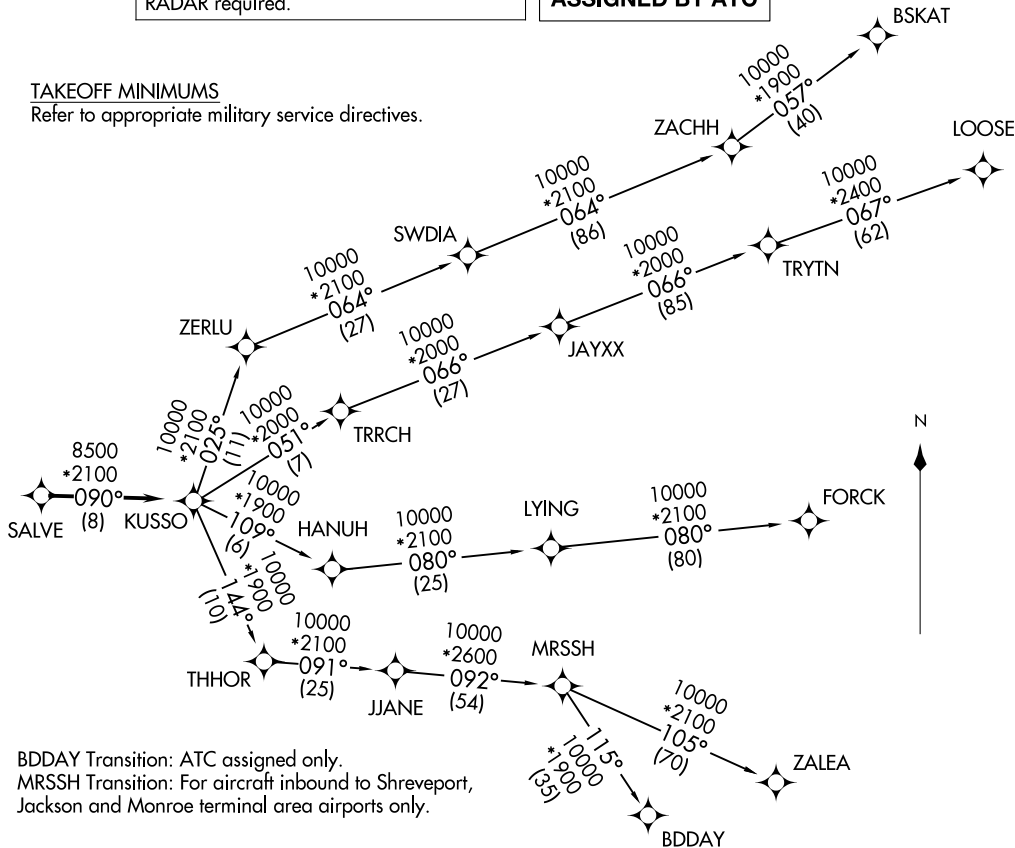
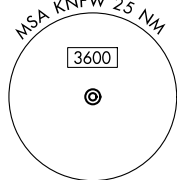
TAKEOFF MINIMUMS

Refer to appropriate military service directives.

LONE STAR DEP CON
125.8 257.95
ATIS ★
351.675
CLNC DEL
126.4 254.325
GND CON
121.675 279.575
NAVY FORT WORTH TOWER ★
120.95 269.325

KUSSO THREE DEPARTURE (RNAV)
(KUSSO3.KUSSO) 14MAY26

FORT WORTH, TEXAS
FORT WORTH NAS JRB (CARSWELL FLD)(KNFTW)



NOTE: BDDAY Transition: ATC assigned only.
NOTE: MRSSH Transition: For aircraft inbound to Shreveport, Jackson and Monroe terminal area airports only.

(CONTINUED ON FOLLOWING PAGE)

NOTE: Chart not to scale.

KUSSO THREE DEPARTURE (RNAV)
(KUSSO3.KUSSO) 26134

AL-160 (FAA) FORT WORTH NAS JRB (CARSWELL FLD)(KNFTW)
FORT WORTH, TEXAS

KUSSO THREE DEPARTURE (RNAV)



DEPARTURE ROUTE DESCRIPTION

When entering controlled airspace, fly heading assigned by ATC, expect RADAR vectors to SALVE, then on track 090° to KUSSO, then on assigned transition. Maintain ATC assigned altitude, expect filed altitude 10 minutes after departure.

- BDDAY TRANSITION (KUSSO3.BDDAY)
- BSKAT TRANSITION (KUSSO3.BSKAT)
- FORCK TRANSITION (KUSSO3.FORCK)
- LOOSE TRANSITION (KUSSO3.LOOSE)
- MRSSH TRANSITION (KUSSO3.MRSSH)
- ZALEA TRANSITION (KUSSO3.ZALEA)

SC-2, 11 JUN 2026 to 09 JUL 2026

SC-2, 11 JUN 2026 to 09 JUL 2026