

NANDR FOUR DEPARTURE (RNAV)

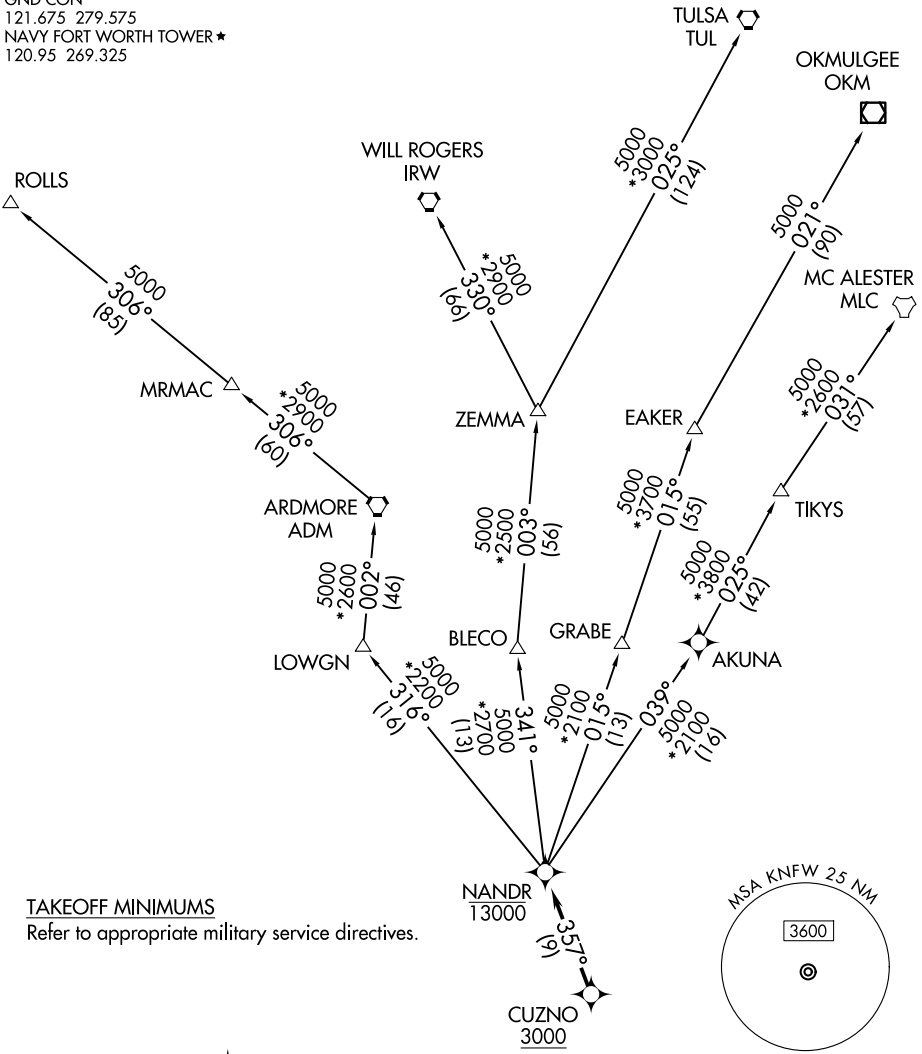
AL-160 (FAA)

FORT WORTH, TEXAS

LONE STAR DEP CON
 125.8 257.95
 ATIS*
 351.675
 GND CON
 121.675 279.575
 NAVY FORT WORTH TOWER*
 120.95 269.325

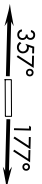
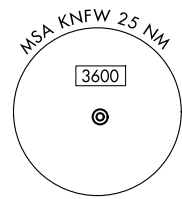
RNAV 1 - DME/DME/IRU or GPS required.
 RADAR required.

**TOP ALTITUDE:
 ASSIGNED BY ATC**



TAKEOFF MINIMUMS

Refer to appropriate military service directives.



NOTE: EAKER Transition: For TUL terminal arrivals only.
 NOTE: TULSA Transition: For all aircraft overflying TUL VORTAC.
 NOTE: Aircraft arriving to the Oklahoma City terminal area, file and expect the ZEMMA enroute transition.

NOTE: Chart not to scale.

(CONTINUED ON FOLLOWING PAGE)

NANDR FOUR DEPARTURE (RNAV)

FORT WORTH, TEXAS

SC-2, 11 JUN 2026 to 09 JUL 2026

SC-2, 11 JUN 2026 to 09 JUL 2026



DEPARTURE ROUTE DESCRIPTION

TAKEOFF RUNWAY 18: Climb on heading 177° or as assigned by ATC, thence. . .

TAKEOFF RUNWAY 36: Climb on heading 357° or as assigned by ATC, thence. . .

. . .expect RADAR vectors to cross CUZNO at or above 3000, then on track 357° to cross NANDR at or below 13000, then on assigned transition. Maintain ATC assigned altitude, expect filed altitude 10 minutes after departure.

EAKER TRANSITION (NANDR4.EAKER)

MC ALESTER TRANSITION (NANDR4.MLC)

OKMULGEE TRANSITION (NANDR4.OKM)

ROLLS TRANSITION (NANDR4.ROLLS)

TULSA TRANSITION (NANDR4.TUL)

WILL ROGERS TRANSITION (NANDR4.IRW)

ZEMMA TRANSITION (NANDR4.ZEMMA)

SC-2, 11 JUN 2026 to 09 JUL 2026

SC-2, 11 JUN 2026 to 09 JUL 2026