

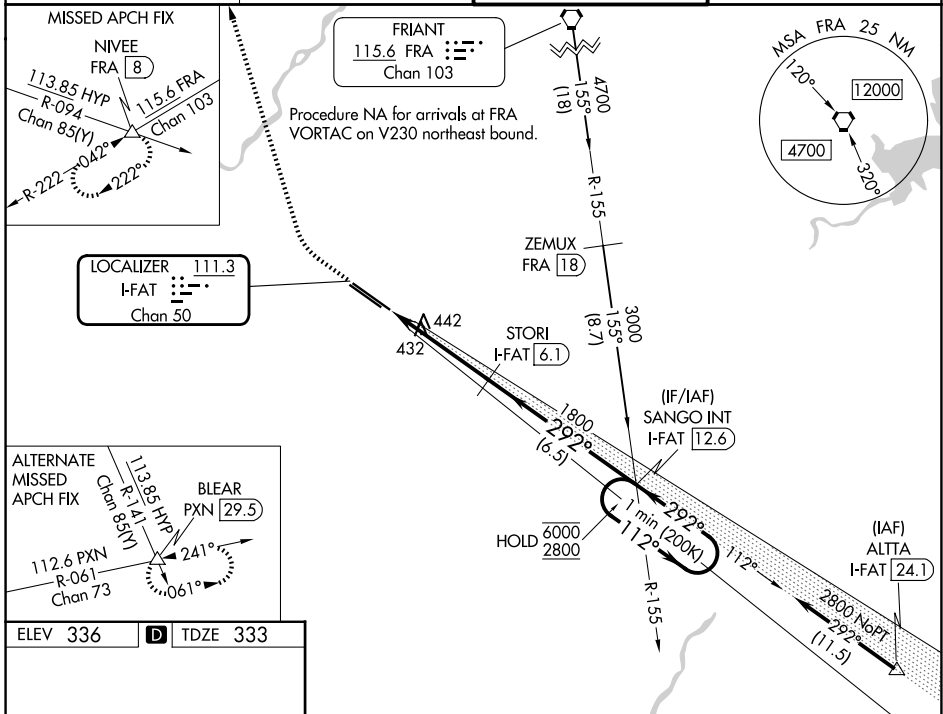
LOC/DME I-FAT 111.3 Chan 50	APP CRS 292°	Rwy Ldg TDZE Apt Elev	9227 333 336
--	------------------------	-----------------------------	---

ILS Y RWY 29R (CAT II & III)

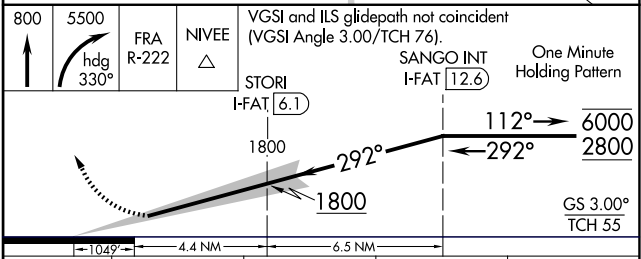
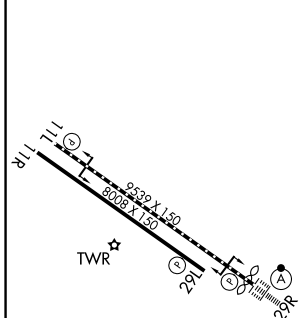
FRESNO YOSEMITE INTL (FAT)

<p>▼ CAT II: RVR 1000 authorized with specific OPSPEC, MSPEC, or LOA approval and use of autoland or HUD to touchdown.</p>	<p>ALSF-2 (A)</p>	<p>MISSED APPROACH: Climb to 800 then climbing right turn to 5500 on heading 330° and FRA VORTAC R-222 to NIVEE INT/FRA 8 DME and hold, continue climb-in-hold to 5500.</p>
---	------------------------------	---

<p>ATIS 121.35 273.6</p>	<p>FRESNO APP CON 119.6 351.95</p>	<p>FRESNO TOWER 118.2 251.1</p>	<p>GND CON 121.7 348.6</p>
-------------------------------------	---	--	---------------------------------------



ELEV 336	D	TDZE 333
----------	----------	----------



CATEGORY	A	B	C	D
S-ILS 29R	CAT II RA 101/12 100 DA 433			
S-ILS 29R	CAT III RVR 06			

CATEGORY II & III ILS - SPECIAL AIRCREW & AIRCRAFT CERTIFICATION REQUIRED

SW-2, 11 JUN 2026 to 09 JUL 2026

SW-2, 11 JUN 2026 to 09 JUL 2026