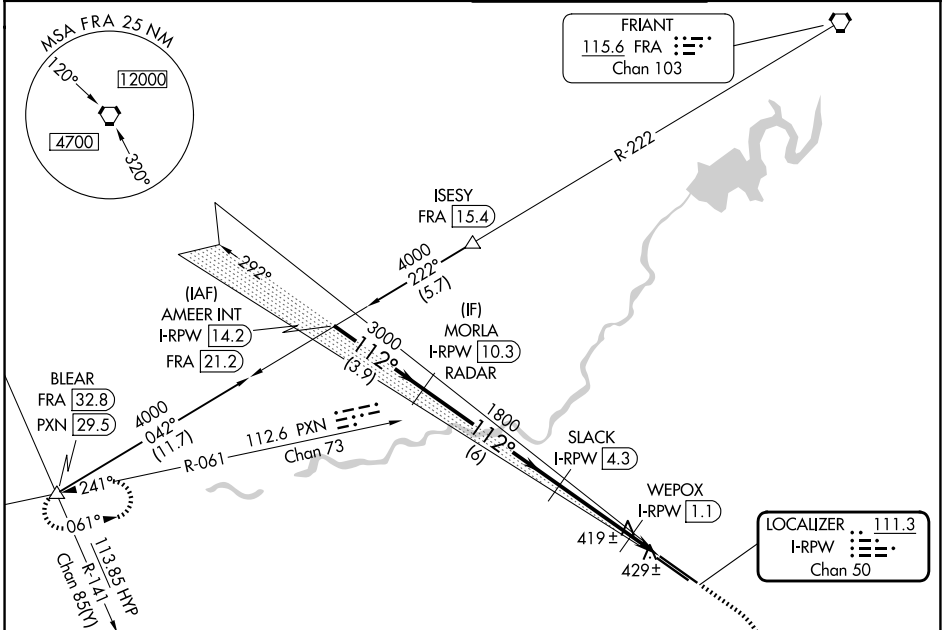


LOC/DME I-RPW <b>111.3</b> Chan 50	APP CRS <b>112°</b>	Rwy Ldg <b>9279</b>	11L <b>8008</b>	11R <b>333</b>
		TDZE <b>336</b>	<b>336</b>	<b>336</b>
		Apt Elev <b>336</b>	<b>336</b>	<b>336</b>

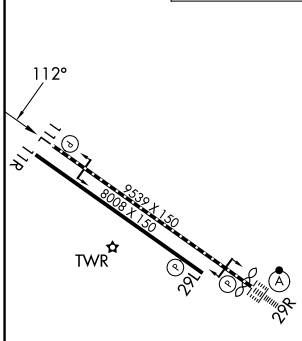
# LOC Y RWY 11L

FRESNO YOSEMITE INTL (FAT)

DME required.		MISSED APPROACH: Climb to 2000 then climbing right turn to 4900 on heading 300° and PXN VORTAC R-061 to BLEAR INT/PXN VORTAC 29.5 DME and hold.	
ATIS <b>121.35 273.6</b>	FRESNO APP CON <b>119.6 351.95</b>	FRESNO TOWER <b>118.2 251.1</b>	GND CON <b>121.7 348.6</b>



ELEV 336	<b>D</b>	TDZE 11L 336
		TDZE 11R 333



AMEER INT I-RPW 14.2	MORLA I-RPW 10.3 RADAR	SLACK I-RPW 4.3	2000	4900 hdg 300°	PXN R-061	BLEAR △
4000	3000	1800	800	I-RPW DME ANTENNA	WEPOX I-RPW 1.1	I-RPW 0.2
3.9 NM		6 NM		3.2 NM		1.3 NM

CATEGORY	A	B	C	D	E
S-LOC 11L	680/55 344 (400-1)				
SIDESTEP 11R	680-1	347 (400-1)	680-1½ 347 (400-1½)	680-2	347 (400-2)

REIL Rwy 11L and 11R  
HIRL Rwy 11L-29R  
MIRL Rwy 11R-29L  
TDZL/RCLS Rwy 29R

SW-2, 11 JUN 2026 to 09 JUL 2026

SW-2, 11 JUN 2026 to 09 JUL 2026