

RNAV 1 - DME/DME/IRU or GPS.
RADAR required.

**TOP ALTITUDE:
ASSIGNED BY ATC**

TAKEOFF MINIMUMS

Rwys 14, 18, 32, 36:
Standard with minimum
climb of 500'/NM to 520.

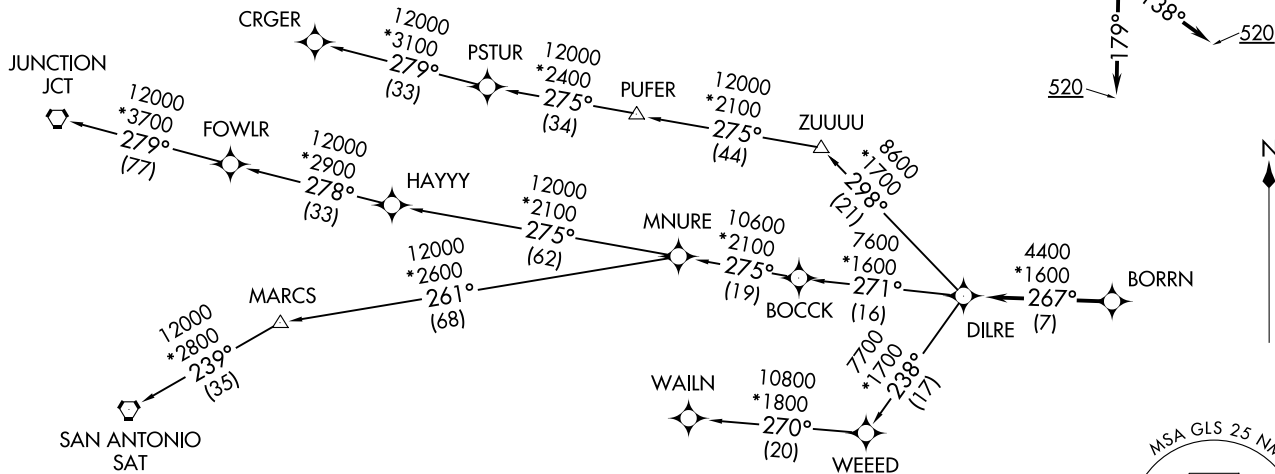
ASOS
123.95
CLNIC DEL (When twr closed)
135.35
GND CON
118.625
GALVESTON TOWER★
120.575 (CTAF)
HOUSTON DEP CON
134.45 284.0

BORRN SIX DEPARTURE (RNAV)
(BORRN6.BORRN) 25051
30NOV23

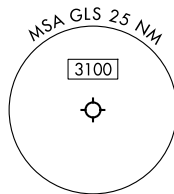
BORRN SIX DEPARTURE (RNAV)
(BORRN6.BORRN) 25051

SCHOLES INTL AT GALVESTON (GLS)
GALVESTON, TEXAS

SCHOLES INTL AT GALVESTON (GLS)
GALVESTON, TEXAS



NOTE: CRGER-TRANSITION ATC assigned only
for aircraft departing 54T, AXH, EFD, GLS,
HPY, IWS, LBX, LVJ, SGR, TME, TØØ, T41.



NOTE: Chart not to scale.

(CONTINUED ON FOLLOWING PAGE)

BORRN SIX DEPARTURE (RNAV)



DEPARTURE ROUTE DESCRIPTION

TAKEOFF RUNWAY 14: Climb on heading 138° to 520, for RADAR vectors to BORRN, thence. . . .

TAKEOFF RUNWAY 18: Climb on heading 179° to 520, for RADAR vectors to BORRN, thence. . . .

TAKEOFF RUNWAY 32: Climb on heading 318° to 520, for RADAR vectors to BORRN, thence. . . .

TAKEOFF RUNWAY 36: Climb on heading 359° to 520, for RADAR vectors to BORRN, thence. . . .

. . . .on track 267° to DILRE, then on (transition). Maintain ATC assigned altitude. Expect filed altitude 10 minutes after departure.

CRGER TRANSITION (BORRN6.CRGER)

JUNCTION TRANSITION (BORRN6.JCT)

MNURE TRANSITION (BORRN6.MNURE)

SAN ANTONIO TRANSITION (BORRN6.SAT)

WAILN TRANSITION (BORRN6.WAILN)

SC-5, 11 JUN 2026 to 09 JUL 2026

SC-5, 11 JUN 2026 to 09 JUL 2026