

# STRYA EIGHT DEPARTURE (RNAV)

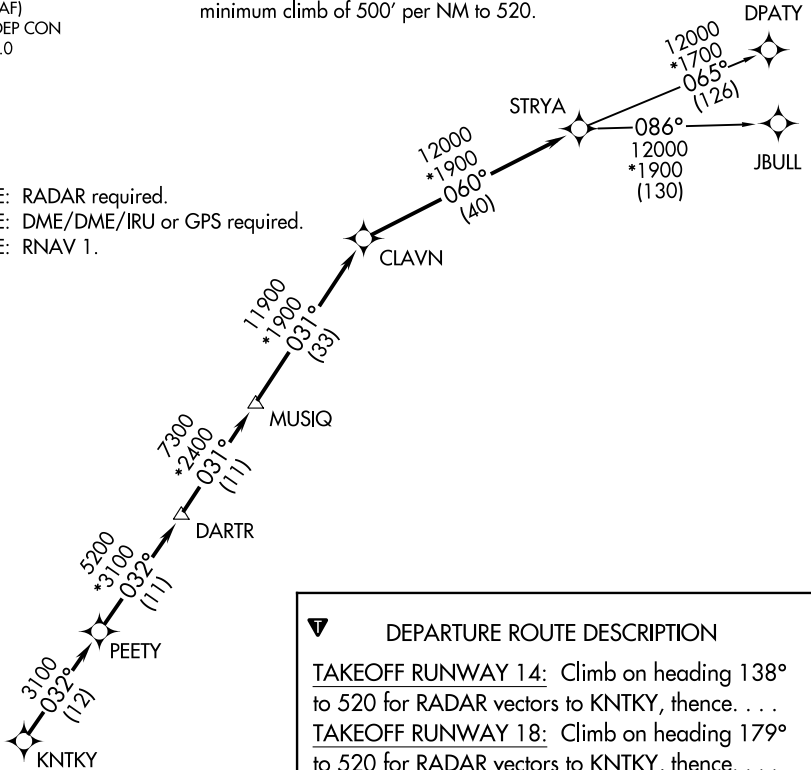
**TOP ALTITUDE: ASSIGNED BY ATC**

ASOS  
123.95  
CLNC DEL (when twr closed)  
135.35  
GND CON  
118.625  
GALVESTON TOWER ★  
120.575 (CTAF)  
HOUSTON DEP CON  
134.45 284.0

### TAKEOFF MINIMUMS

Rwys 14, 18, 32, 36: Standard with  
minimum climb of 500' per NM to 520.

NOTE: RADAR required.  
NOTE: DME/DME/IRU or GPS required.  
NOTE: RNAV 1.



**DEPARTURE ROUTE DESCRIPTION**

TAKEOFF RUNWAY 14: Climb on heading 138° to 520 for RADAR vectors to KNTKY, thence. . . .

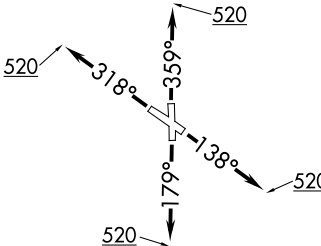
TAKEOFF RUNWAY 18: Climb on heading 179° to 520 for RADAR vectors to KNTKY, thence. . . .

TAKEOFF RUNWAY 32: Climb on heading 318° to 520 for RADAR vectors to KNTKY, thence. . . .

TAKEOFF RUNWAY 36: Climb on heading 359° to 520 for RADAR vectors to KNTKY, thence. . . .

. . . .on track 032° to PEETY, then on track 032° to DARTR, then on track 031° to MUSIQ, then on track 031° to CLAVN, then on track 060° to STRYA, then on (transition). Maintain ATC assigned altitude. Expect filed altitude 10 minutes after departure.

DPATY TRANSITION (STRYA8.DPATY)  
JBULL TRANSITION (STRYA8.JBULL)



NOTE: Chart not to scale.

SC-5, 11 JUN 2026 to 09 JUL 2026

SC-5, 11 JUN 2026 to 09 JUL 2026

# STRYA EIGHT DEPARTURE (RNAV)

(STRYA8.STRYA) 07OCT21