

(WATFO6.WATFO) 23222

WATFO SIX DEPARTURE (RNAV)

AL-164 (FAA)

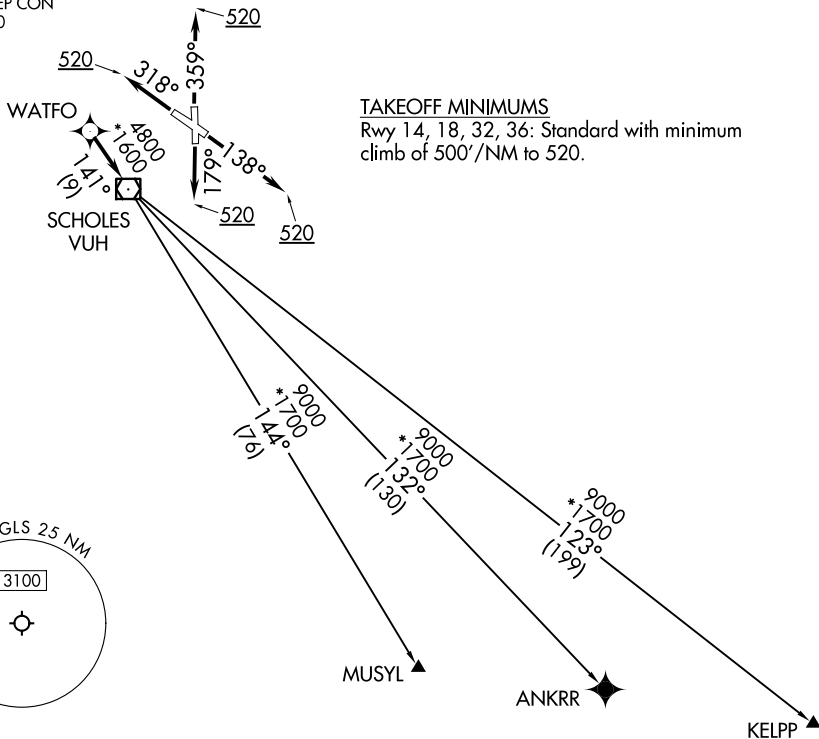
SCHOLES INTL AT GALVESTON (GLS)
GALVESTON, TEXAS

ASOS
123.95
CLNC DEL (When twr closed)
135.35
GND CON
118.625
GALVESTON TOWER★
120.575 (CTAF)
HOUSTON DEP CON
134.45 284.0

RNAV 1 - DME/DME/IRU or GPS.

RADAR required.

**TOP ALTITUDE:
ASSIGNED BY ATC**



TAKEOFF MINIMUMS
Rwy 14, 18, 32, 36: Standard with minimum
climb of 500'/NM to 520.

SC-5, 11 JUN 2026 to 09 JUL 2026

SC-5, 11 JUN 2026 to 09 JUL 2026

NOTE: Chart not to scale.



DEPARTURE ROUTE DESCRIPTION

TAKEOFF RUNWAY 14: Climb on heading 138° to 520, for RADAR vectors to WATFO, thence. . . .
TAKEOFF RUNWAY 18: Climb on heading 179° to 520, for RADAR vectors to WATFO, thence. . . .
TAKEOFF RUNWAY 32: Climb on heading 318° to 520, for RADAR vectors to WATFO, thence. . . .
TAKEOFF RUNWAY 36: Climb on heading 359° to 520, for RADAR vectors to WATFO, thence. . . .

. . . on track 141° to VUH VOR/DME, then on (transition). Maintain ATC assigned altitude.
 Expect filed altitude 10 minutes after departure.

ANKRR TRANSITION (WATFO6.ANKRR)
KELPP TRANSITION (WATFO6.KELPP)
MUSYL TRANSITION (WATFO6.MUSYL)

WATFO SIX DEPARTURE (RNAV)

(WATFO6.WATFO) 10AUG23

GALVESTON, TEXAS
SCHOLES INTL AT GALVESTON (GLS)