

ILS RWY 22L (SA CAT I & II) CHICAGO O'HARE INTL (ORD)

LOC I-LQQ 110.1	APP CRS 225°	Rwy Ldg TDZE Apt Elev 8075 654 680
---------------------------	------------------------	--

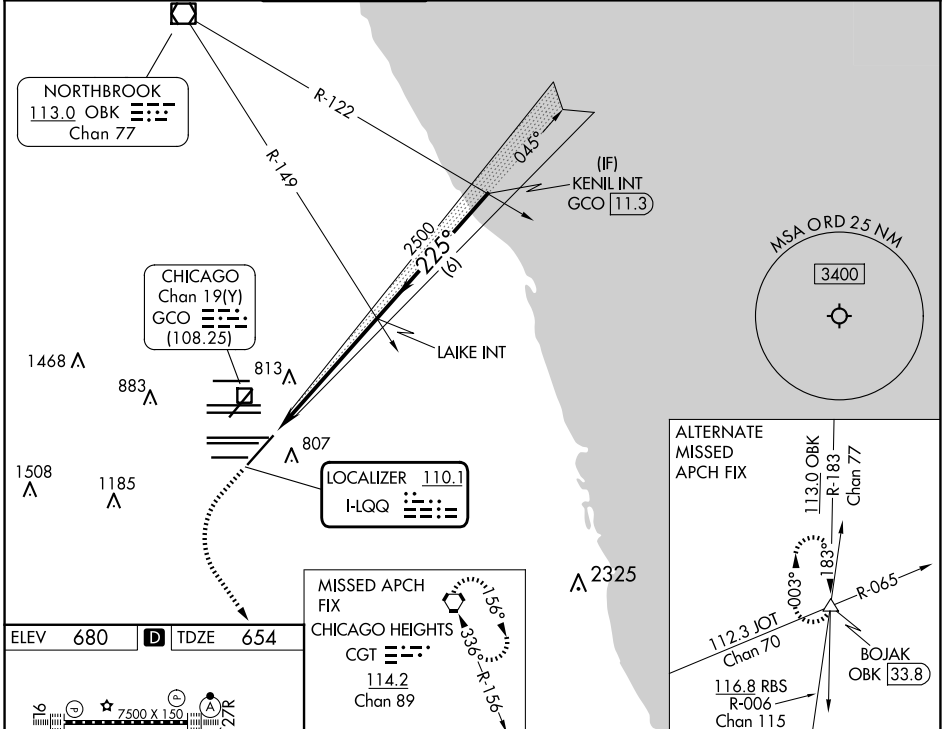
RADAR required for procedure entry.

Simultaneous approach authorized.
 SA CAT I: Requires specific OPSPEC, MSPEC, or LOA approval and use of HUD to DH.
 SA CAT II: Reduced lighting: Requires specific OPSPEC, MSPEC, or LOA approval and use of autoland or HUD to touchdown.

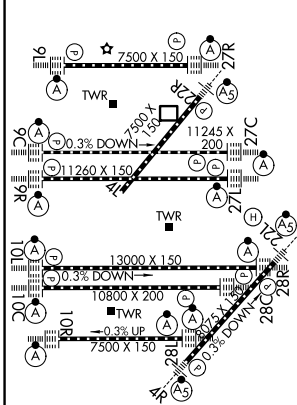


MISSED APPROACH:
 Climb to 1100 then climbing left turn to 4000 direct CGT VORTAC and hold.

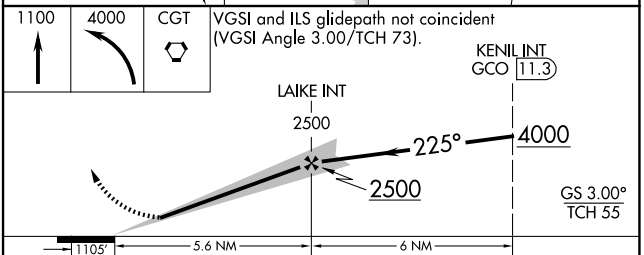
D-ATIS 135.4 282.225	CHICAGO APP CON 119.0 292.125	O'HARE TOWER 120.75 348.0	GND CON (TWR NORTH) 124.125 (TWR SOUTH) 118.05 (ALL TWRs) 226.675	(TWR CENTER) 121.75 (OBND) 121.9 (IBND)	CLNC DEL 121.6	CPDLC
--	---	-------------------------------------	---	---	--------------------------	-------



ELEV 680	D TDZE 654
----------	-------------------



HIRL all Rwys
 TDZ/CL all Rwys except 4L



CATEGORY	A	B	C	D
S-ILS 22L	SA CAT I	RA 164/16	150 DA 804	
S-ILS 22L	SA CAT II	RA 112/12	100 DA 754	

SA CATEGORY I & II ILS - SPECIAL AIRCREW & AIRCRAFT CERTIFICATION REQUIRED

EC-3, 11 JUN 2026 to 09 JUL 2026

EC-3, 11 JUN 2026 to 09 JUL 2026