

LOC/DME I-U-Y-J 111.9 Chan 56	APP CRS 273°	Rwy Ldg 11245 TDZE 653 Apt Elev 680
--	------------------------	--

ILS RWY 27C (CAT II & III)

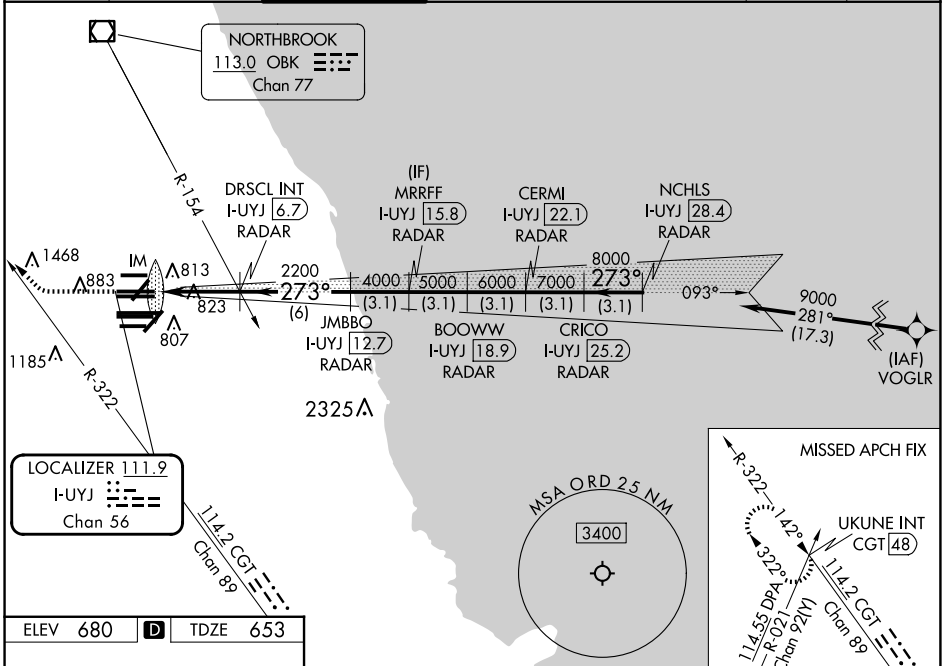
CHICAGO O'HARE INTL (ORD)

From VOGLR: RNAV 1-GPS required. Aircraft not GPS equipped - RADAR required for procedure entry. DME or RADAR required.

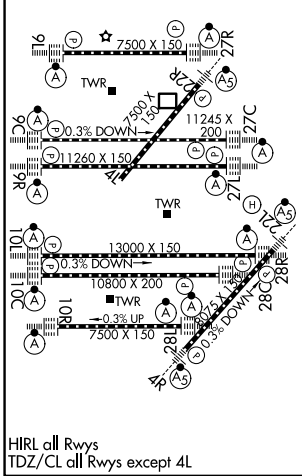
Simultaneous approach authorized. CAT II: RVR 1000 authorized with specific OPSPEC, MSPEC, or LOA approval and use of autoland or HUD to touchdown.

ALSF-2
MISSED APPROACH: Climb to 1100 then climbing right turn to 4000 on heading 290° and CGT R-322 to UKUNE INT/CGT 48 DME and hold.

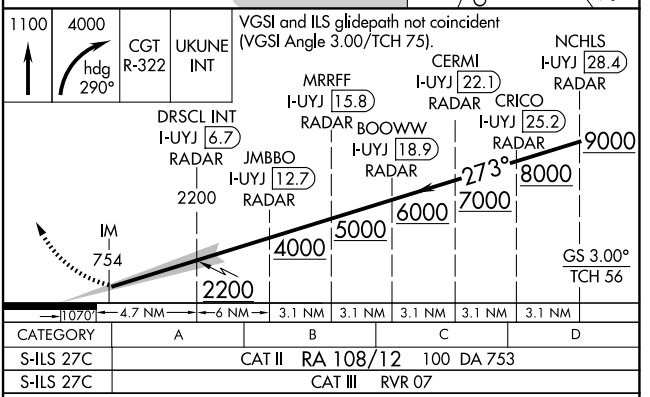
D-ATIS 135.4 282.225	CHICAGO APP CON 119.0 292.125	O'HARE TOWER 121.15 348.0	GND CON (TWR NORTH) 124.125 (TWR SOUTH) 118.05 (ALL TWRS) 226.675	(TWR CENTER) (OBND) 121.75 (IBND) 121.9	CLNC DEL 121.6	CPDLC
--	---	-------------------------------------	---	--	--------------------------	-------



ELEV 680	D	TDZE 653
----------	----------	----------



HIRL all Rwys
TDZ/CL all Rwys except 4L



CATEGORY	A	B	C	D
S-ILS 27C	CAT II RA 108/12 100 DA 753			
S-ILS 27C	CAT III RVR 07			

CATEGORY II & III ILS - SPECIAL AIRCREW & AIRCRAFT CERTIFICATION REQUIRED

EC-3, 11 JUN 2026 to 09 JUL 2026

EC-3, 11 JUN 2026 to 09 JUL 2026