

LOC/DME I-UYJ 111.9 Chan 56	APP CRS 273°	Rwy Ldg 11245 TDZE 653 Apt Elev 680
--	------------------------	--

ILS RWY 27C (SA CAT I)

CHICAGO O'HARE INTL (ORD)

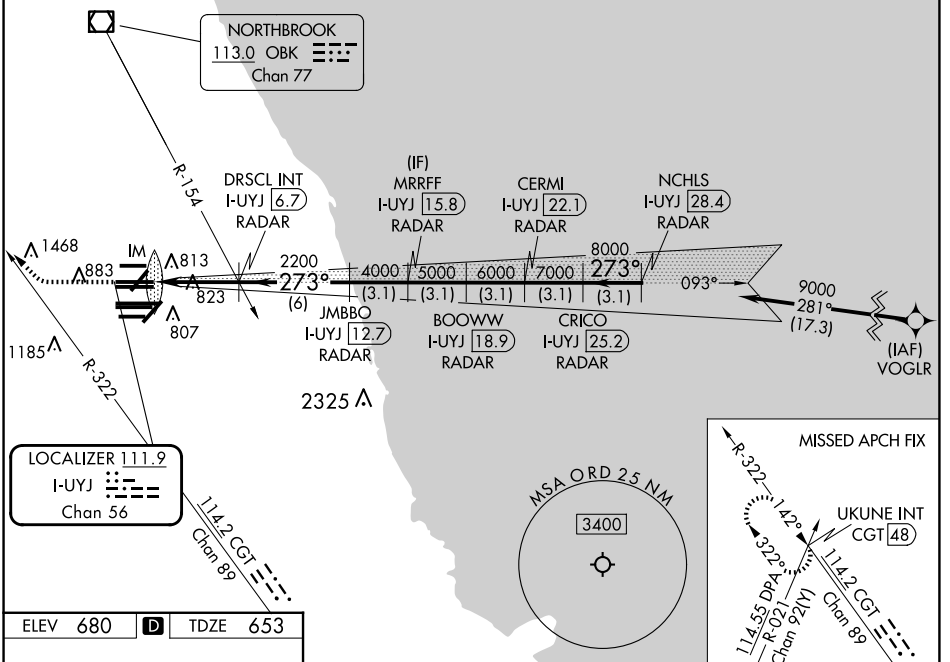
From VOGLR: RNAV 1-GPS required. Aircraft not GPS equipped - RADAR required for procedure entry. DME or RADAR required.

Simultaneous approach authorized. Requires specific OPSPEC, MSPEC, or LOA approval.

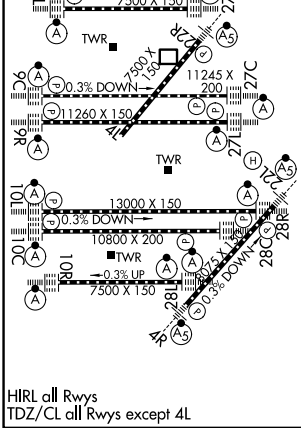
ALSF-2

MISSED APPROACH: Climb to 1100 then climbing right turn to 4000 on heading 290° and CGT R-322 to UKUNE INT/CGT 48 DME and hold.

D-ATIS 135.4 282.225	CHICAGO APP CON 119.0 292.125	O'HARE TOWER 121.15 348.0	GND CON (TWR NORTH) 124.125 (TWR SOUTH) 118.05 (ALL TWRS) 226.675	(TWR CENTER) (OBND) 121.75 (IBND) 121.9	CLNC DEL 121.6	CPDLC
--	---	-------------------------------------	---	--	--------------------------	-------



ELEV 680	D	TDZE 653
----------	----------	----------



HIRL all Rwys
TDZ/CL all Rwys except 4L

1100	4000	CGT R-322	UKUNE INT	VGSI and ILS glidepath not coincident (VGSI Angle 3.00/TCH 75).	NCHLS I-UYJ 28.4 RADAR
↑	hdg 290°	DRISCL INT I-UYJ 6.7 RADAR	JMBBO I-UYJ 12.7 RADAR	MRRFF I-UYJ 15.8 RADAR	CERMI I-UYJ 22.1 RADAR
IM	2200	BOOWW I-UYJ 18.9 RADAR	CRICO I-UYJ 25.2 RADAR	9000	GS 3.00° TCH 56
4000	5000	6000	7000	8000	
4.7 NM	6 NM	3.1 NM	3.1 NM	3.1 NM	3.1 NM
CATEGORY A	B	C	D		
S-ILS 27C	RA 158/14	150	DA 803		

SA CATEGORY I ILS - SPECIAL AIRCREW & AIRCRAFT CERTIFICATION REQUIRED

EC-3, 11 JUN 2026 to 09 JUL 2026

EC-3, 11 JUN 2026 to 09 JUL 2026