

LOC/DME I-TSL <b>111.1</b> Chan <b>48</b>	APP CRS <b>273°</b>	Rwy Ldg TDZE <b>651</b> Apt Elev <b>680</b>
---	------------------------	---

# ILS RWY 28R (CAT II & III)

CHICAGO O'HARE INTL (ORD)

From VOGLR: RNAV 1-GPS required.  
Aircraft not GPS equipped - RADAR required for procedure entry.  
DME or RADAR required.

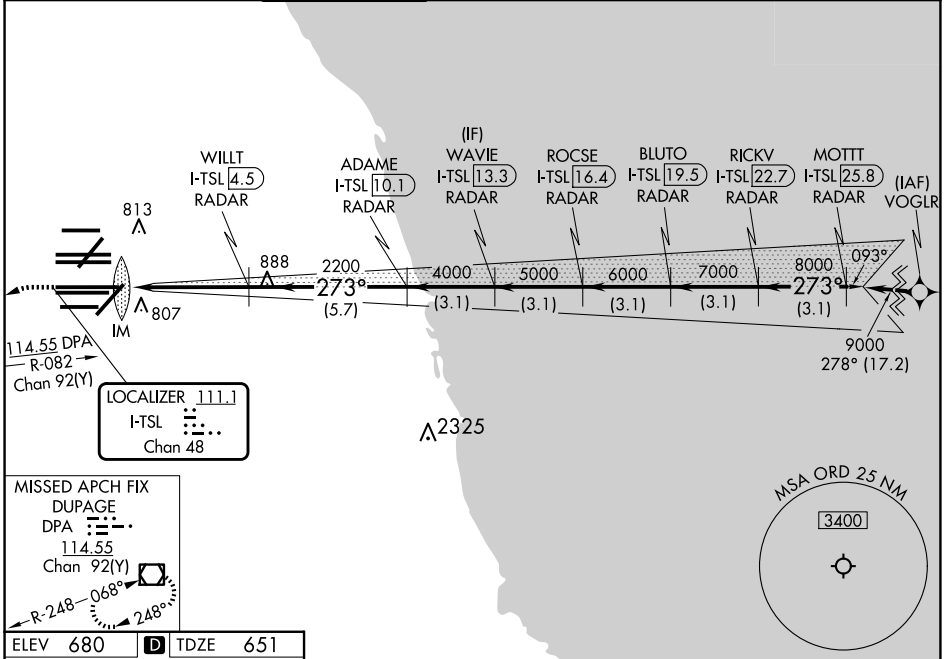
ALSIF-2

MISSED APPROACH: Climb to 1100 then climbing left turn to 4000 on heading 215° and DPA VOR/DME R-082 to DPA VOR/DME and hold.

Simultaneous approach authorized.



D-ATIS <b>135.4</b> <b>282.225</b>	CHICAGO APP CON <b>119.0 292.125</b>	O'HARE TOWER <b>132.7 348.0</b>	GND CON (TWR CENTER) <b>124.125</b> (TWR NORTH) <b>118.05</b> (TWR SOUTH) <b>226.675</b> (ALL TWRs)	(TWR CENTER) <b>121.75</b> (OBND) <b>121.9</b> (IBND)	CLNC DEL <b>121.6</b>	CPDLC
--	---	------------------------------------	--	---	--------------------------	-------



EC-3, 11 JUN 2026 to 09 JUL 2026

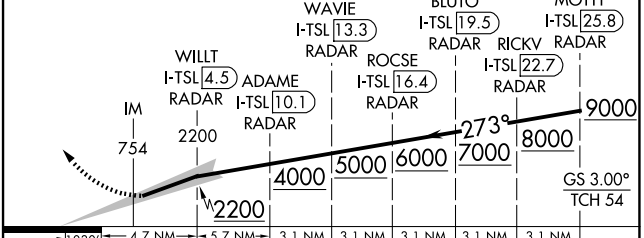
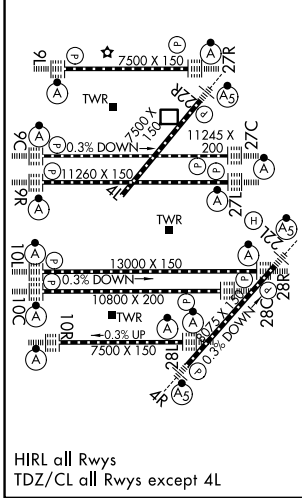
EC-3, 11 JUN 2026 to 09 JUL 2026

MISSED APCH FIX  
DUPAGE  
DPA 114.55  
Chan 92(Y)  
R-248-068°  
248°

ELEV 680	<b>D</b>	TDZE 651
----------	----------	----------

1100  
↑  
hdg 215°  
DPA R-082

VGSI and ILS glidepath not coincident  
(VGSI Angle 3.00/TCH 70).



CATEGORY	A	B	C	D
S-ILS 28R	CAT II RA 97/12 100 DA 751			
S-ILS 28R	CAT III RVR 06			

## CATEGORY II & III ILS - SPECIAL AIRCREW & AIRCRAFT CERTIFICATION REQUIRED