

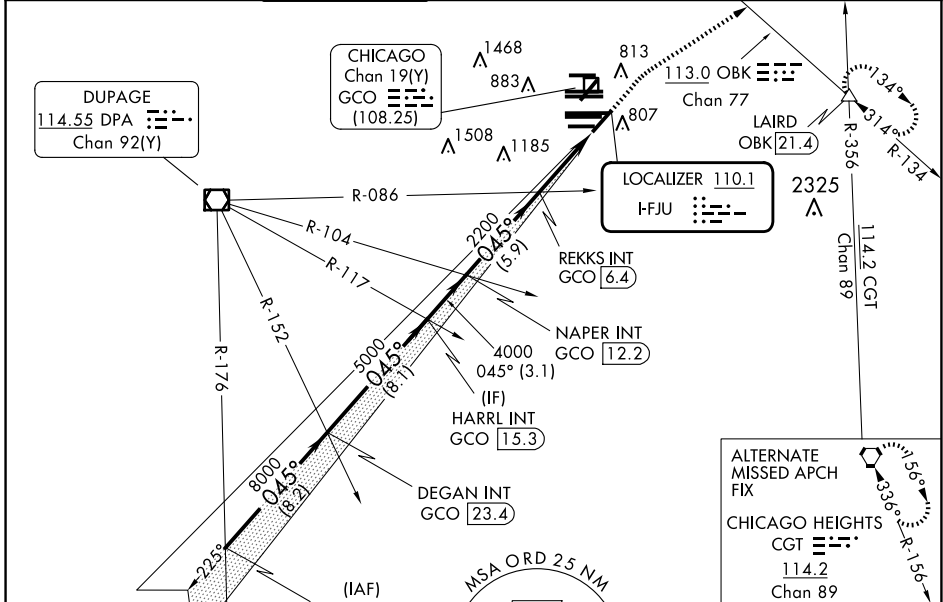
LOC I-FJU <b>110.1</b>	APP CRS <b>045°</b>	Rwy Ldg TDZE Apt Elev <b>8075</b> <b>661</b> <b>680</b>
---------------------------	------------------------	--

# ILS RWY 4R (SA CAT I & II)

CHICAGO O'HARE INTL (ORD)

RADAR required for procedure entry.		MALSR 	MISSED APPROACH: Climb to 1200 then climbing right turn to 4000 on heading 060° and OBK VOR/DME R-134 to LAIRD INT/OBK 21.4 DME and hold.
<p>▼ SA CAT I: Requires specific OPSPEC, MSPEC, or LOA approval and use of HUD to DH. SA CAT II: Reduced lighting: Requires specific OPSPEC, MSPEC, or LOA approval and use of autoland or HUD to touchdown.</p>			

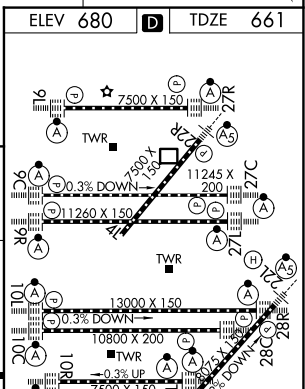
D-ATIS <b>135.4</b> <b>282.225</b>	CHICAGO APP CON <b>119.0 292.125</b>	O'HARE TOWER <b>120.75 348.0</b>	<b>124.125</b> GND CON (TWR NORTH) <b>118.05</b> (TWR SOUTH) <b>226.675</b> (ALL TWRs)	(TWR CENTER) <b>121.75</b> (OBND) <b>121.9</b> (IBND)	CLNC DEL <b>121.6</b>	CPDLC
--	---	-------------------------------------	--	---	--------------------------	-------



**ALTERNATE MISSED APCH FIX**

CHICAGO HEIGHTS  
CGT 114.2  
Chan 89

RAHNN INT GCO [31.6]	DEGAN INT GCO [23.4]	HARRL INT GCO [15.3]	NAPER INT GCO [12.2]	REKKS INT GCO [6.4]	LAIRD
<p>11000 GS 3.00° TCH 52</p> <p>8000 045°</p> <p>5000</p> <p>4000</p> <p>2200</p> <p>2128</p> <p>8.2 NM 8.1 NM 3.1 NM 5.9 NM 4.4 NM 1049'</p>					



CATEGORY	A	B	C	D
S-ILS 4R	SA CAT I	RA 160/16	150 DA 811	
S-ILS 4R	SA CAT II	RA 111/12	100 DA 761	

**SA CATEGORY I & II ILS - SPECIAL AIRCREW & AIRCRAFT CERTIFICATION REQUIRED**

HIRL all Rwys  
TDZ/CL all Rwys except 4L

EC-3, 11 JUN 2026 to 09 JUL 2026

EC-3, 11 JUN 2026 to 09 JUL 2026