

LOC/DME I-MED 111.1 Chan 48	APP CRS 093°	Rwy Ldg 12246 TDZE 672 Apt Elev 680
---	------------------------	--

ILS or LOC RWY 10L

CHICAGO O'HARE INTL (ORD)

From GIBNS: RNAV-1 GPS required.

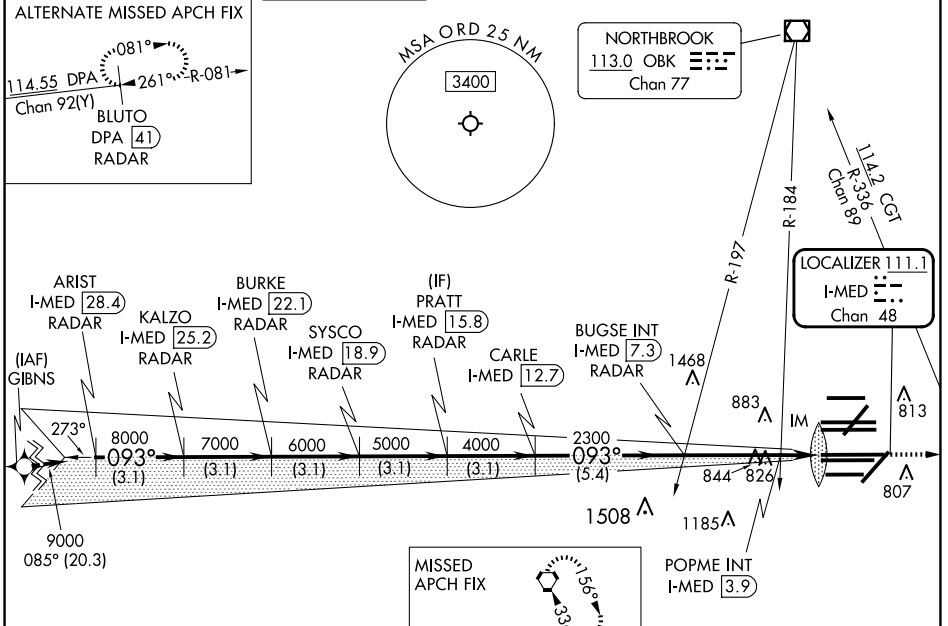
RNAV 1-GPS or RADAR required for procedure entry. DME or RADAR required.

Simultaneous approach authorized.

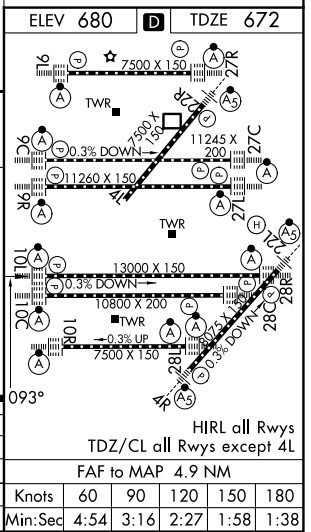
ALSIF-2

MISSED APPROACH: Climb to 4000 on heading 093° and CGT VORTAC R-336 to CGT VORTAC and hold.

D-ATIS 135.4 282.225	CHICAGO APP CON 119.0 292.125	O'HARE TOWER 132.7 348.0	GND CON (TWR CENTER) 124.125 (TWR NORTH) 118.05 (TWR SOUTH) 226.675 (ALL TWRS)	CLNC DEL 121.75 (OBND) 121.9 (IBND)	CPDLC 121.6
--	---	------------------------------------	--	---	-----------------------



ARIST I-MED 28.4 RADAR		BURKE I-MED 22.1 RADAR		PRATT I-MED 15.8 RADAR		BUGSE INT I-MED 7.3		CARLE I-MED 12.7		POPME INT I-MED 3.9	
KALZO I-MED 25.2 RADAR		SYSCO I-MED 18.9 RADAR		CGT R-336		CGT		*LOC only.		I-MED 2.4	
9000		8000		7000		6000		5000		4000	
3.1 NM		3.1 NM		3.1 NM		3.1 NM		3.1 NM		5.4 NM	
CATEGORY A		CATEGORY B		CATEGORY C		CATEGORY D					
S-ILS 10L		872/18				200 (200-½)					
S-LOC 10L		1200/24		528 (600-½)		1200/55		528 (600-1)			
POPME FIX MINIMUMS (DUAL VOR RECEIVERS OR DME REQUIRED)											
S-LOC 10L		1080/24		408 (400-½)		1080/40		408 (400-¾)			



EC-3, 11 JUN 2026 to 09 JUL 2026

EC-3, 11 JUN 2026 to 09 JUL 2026