

LOC/DME I-ABU <b>111.75</b> Chan 54 (Y)	APP CRS <b>273°</b>	Rwy Ldg <b>7500</b> TDZE <b>664</b> Apt Elev <b>680</b>
---	------------------------	---

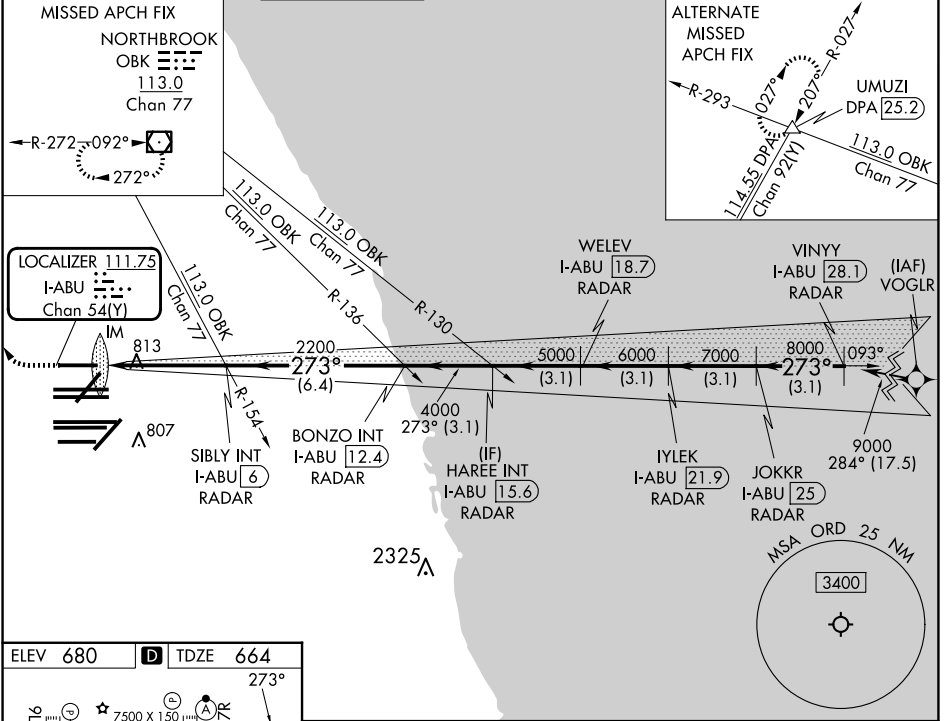
# ILS or LOC RWY 27R

CHICAGO O'HARE INTL (ORD)

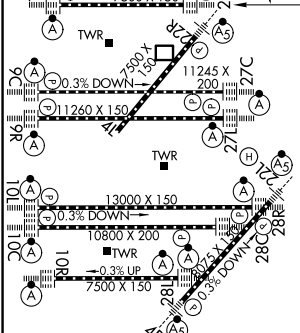
RNAV-1 GPS or RADAR required for procedure entry. RADAR or DME required. ALSF-2

Simultaneous approach authorized. MISSED APPROACH: Climb to 1100 then climbing right turn to 4000 direct OBK VOR/DME and hold, continue climb-in-hold to 4000.

D-ATIS <b>135.4</b> <b>282.225</b>	CHICAGO APP CON <b>119.0 292.125</b>	O'HARE TOWER <b>128.15 348.0</b>	<b>124.125</b> (TWR NORTH) <b>118.05</b> (TWR SOUTH) <b>226.675</b> (ALL TWRs)	GND CON (TWR CENTER) <b>121.75</b> (OBND) <b>121.9</b> (IBND)	CLNC DEL <b>121.6</b>	CPDLC
--	---	-------------------------------------	--	---	--------------------------	-------



ELEV 680	<b>D</b>	TDZE 664
----------	----------	----------



1100	4000	OBK						
*LOC only.								
I-ABU 1.4	*I-ABU 2.6	SIBLY INT I-ABU 6 RADAR	BONZO INT I-ABU 12.4 RADAR	WELEV I-ABU 18.7 RADAR	HAREE INT I-ABU 15.6 RADAR	IYLEK I-ABU 21.9 RADAR	JOKKR I-ABU 25 RADAR	VINYI I-ABU 28.1 RADAR
0.2	1.0	-3.4 NM	-6.4 NM	3.1 NM	3.1 NM	3.1 NM	3.1 NM	3.1 NM
CATEGORY		A		B		C		D
S-ILS 27R		864/18		200 (200-1/2)				
S-LOC 27R		1120/24		456 (500-1/2)		1120/45		456 (500-7/8)

Knots	60	90	120	150	180
Min:Sec	4:42	3:08	2:21	1:53	1:34

EC-3, 11 JUN 2026 to 09 JUL 2026

EC-3, 11 JUN 2026 to 09 JUL 2026