

LOC/DME I-VZE 108.95 Chan 26 (Y)	APP CRS 273°	Rwy Ldg 10800
		TDZE 651
		Apt Elev 680

ILS or LOC RWY 28C

CHICAGO O'HARE INTL (ORD)

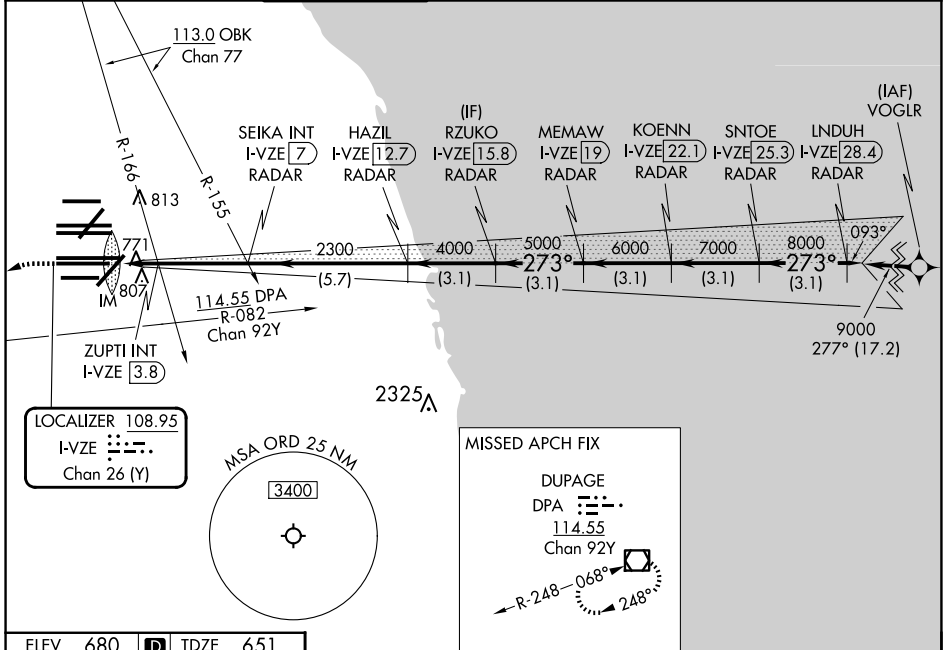
From VOGLR: RNAV 1-GPS required.
Aircraft not GPS equipped - RADAR required for procedure entry.
DME or RADAR required.

ALSf-2

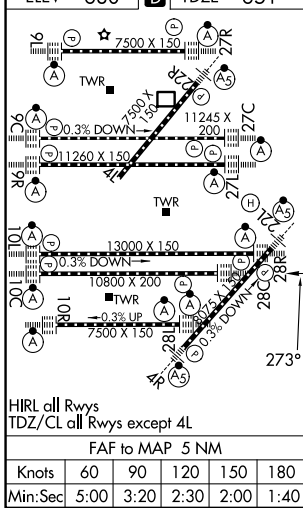
MISSED APPROACH: Climb to 1100 then climbing left turn to 4000 on heading 215° and DPA VOR/DME R-082 to DPA VOR/DME and hold.

Simultaneous approach authorized.

D-ATIS 135.4 282.225	CHICAGO APP CON 119.0 292.125	O'HARE TOWER 120.75 348.0	GND CON (TWR CENTER) 124.125 (TWR NORTH) 118.05 (TWR SOUTH) 226.675 (ALL TWRS)	(TWR CENTER) 121.75 (OBND) 121.9 (IBND)	CLNC DEL 121.6	CPDLC
--	---	-------------------------------------	--	---	--------------------------	-------



ELEV 680	D	TDZE 651
----------	---	----------



1100	4000	DPA R-082	DPA	RZUKO I-VZE [15.8] RADAR	KOENN I-VZE [22.1] RADAR	INDUH I-VZE [28.4] RADAR
hdg 215°				SEIKA INT I-VZE [7] RADAR	MEMAW I-VZE [19] RADAR	SNTOE I-VZE [25.3] RADAR
* LOC only.						
ZUPTI INT I-VZE [3.8]	HAZIL I-VZE [12.7] RADAR	2300	4000	5000	6000	7000
I-VZE [2]	ZUPTI INT I-VZE [2.9]	* I-VZE [2.9]	* I-VZE [2.9]	* I-VZE [2.9]	* I-VZE [2.9]	* I-VZE [2.9]
IM						
1200	2300	4000	5000	6000	7000	8000
0.1	0.9	0.8	3.2 NM	5.7 NM	3.1 NM	3.1 NM
CATEGORY	A	B	C	D		
S-ILS 28C	851/18 200 (200-½)					
S-LOC 28C	1200/24	549 (600-½)	1200/60	549 (600-1¼)		
ZUPTI FIX MINIMUMS (DUAL VOR RECEIVERS OR DME REQUIRED)						
S-LOC 28C	1040/24	389 (400-½)	1040/35	389 (400-¾)		
GS 3.00° TCH 55						
VGSi and ILS glidepath not coincident (VGSi Angle 3.00/TCH 80).						

EC-3, 11 JUN 2026 to 09 JUL 2026

EC-3, 11 JUN 2026 to 09 JUL 2026