


LOC/DME I-VQX 110.75 Chan 44(Y)	APP CRS 274°	Rwy Ldg TDZE Apt Elev	7500 667 680
--	------------------------	-----------------------------	---


ILS or LOC RWY 28L

CHICAGO O'HARE INTL (ORD)

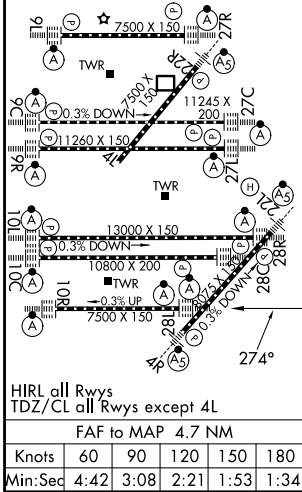
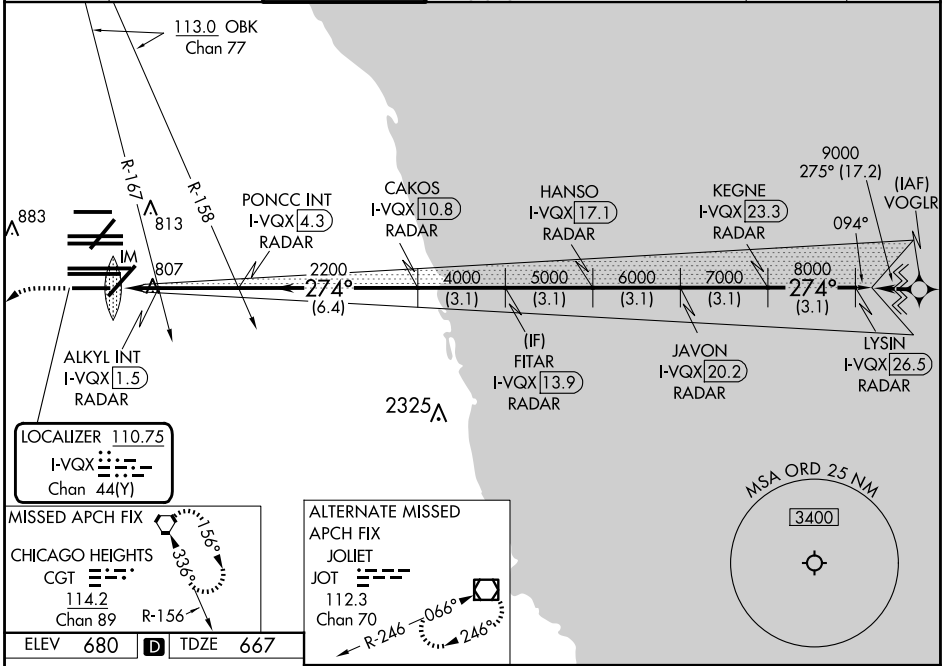
Aircraft not GPS equipped - RADAR required for procedure entry. DME or RADAR required.
From VOGLR: RNAV 1-GPS required.

ALSF-2 

MISSED APPROACH: Climb to 1200 then climbing left turn to 4000 direct CGT VORTAC and hold.

 Simultaneous approach authorized.

D-ATIS 135.4 282.225	CHICAGO APP CON 119.0 292.125	O'HARE TOWER 133.0 348.0	GND CON (TWR CENTER) 124.125 (TWR NORTH) 118.05 (TWR SOUTH) 226.675 (ALL TWRS)	(TWR CENTER) (OBND) 121.75 (IBND) 121.9	CLNC DEL 121.6	CPDLC
--	---	------------------------------------	--	---	--------------------------	-------



ELEV 680	TDZE 667				
1200	4000	CGT	*LOC only.		
I-VQX DME ANTENNA	ALSKY INT I-VQX [1.5] RADAR	ALSKY INT I-VQX [0.8] RADAR	ALSKY INT I-VQX [0.3] RADAR	ALSKY INT I-VQX [0.7] RADAR	ALSKY INT I-VQX [0.9] RADAR
PONCC INT I-VQX [4.3] RADAR	CAKOS I-VQX [10.8] RADAR	HANSO I-VQX [17.1] RADAR	FITAR I-VQX [13.9] RADAR	JAVON I-VQX [20.2] RADAR	LYSIN I-VQX [26.5] RADAR
2200	4000	5000	6000	7000	8000
274°	274°	274°	274°	274°	274°
0.2	0.9	0.7	2.9 NM	6.4 NM	3.1 NM
CATEGORY	A	B	C	D	
S-ILS 28L	867/18 200 (200-½)				
S-LOC 28L	1240/24	573 (600-½)	1240-1/4	573 (600-1/4)	
ALSKY FIX MINIMUMS (DUAL VOR RECEIVERS OR DME REQUIRED)					
S-LOC 28L	1060/24	393 (400-½)	1060/35	393 (400-5/8)	

EC-3, 11 JUN 2026 to 09 JUL 2026

EC-3, 11 JUN 2026 to 09 JUL 2026