

LOC/DME I-OYG 111.9 Chan 56	APP CRS 093°	Rwy Ldg 11245 TDZE 673 Apt Elev 680
--	------------------------	--

ILS or LOC RWY 9C

CHICAGO O'HARE INTL (ORD)

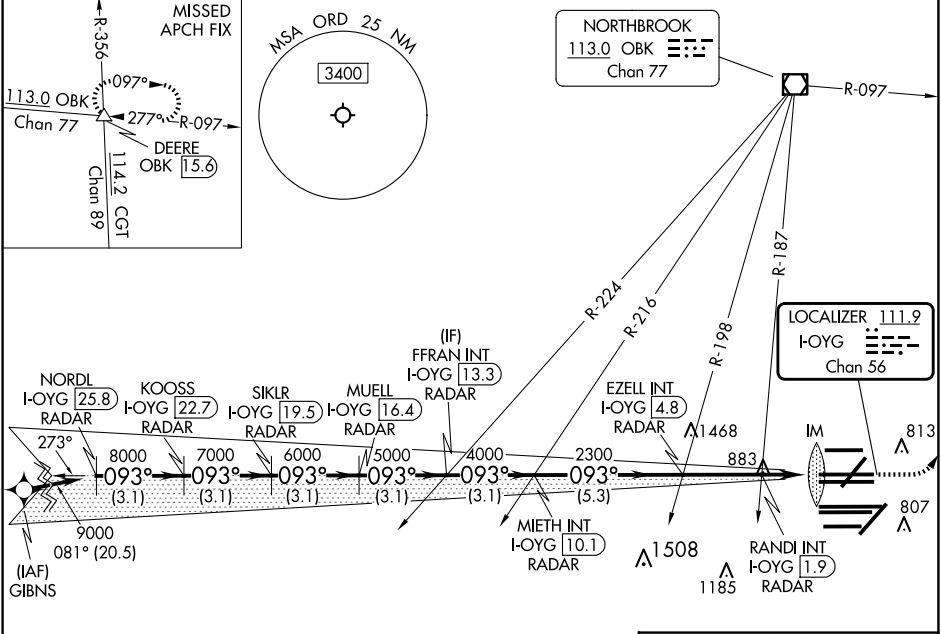
DME or RADAR required. From GIBNS: RNAV 1-GPS required. Aircraft not GPS equipped - RADAR required for procedure entry.

Simultaneous approach authorized. For inop ALS, increase S-LOC 9C Cat C/D visibility to 1½ SM.

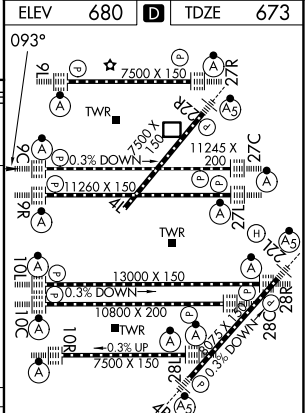
ALSF-2

MISSED APPROACH: Climb to 1200 then climbing left turn to 4000 on heading 037° and OBK VOR/DME R-097 to DEERE INT/ OBK 1.5.6 DME and hold.

D-ATIS 135.4 282.225	CHICAGO APP CON 119.0 292.125	O'HARE TOWER 121.15 348.0	GND CON (TWR CENTER) 124.125 (TWR NORTH) 118.05 (TWR SOUTH) 226.675 (ALL TWRs)	CLNC DEL 121.6	CPDLC
--	---	-------------------------------------	--	--------------------------	-------



NORDL I-OYG 25.8 RADAR	KOOSS I-OYG 22.7 RADAR	SIKLR I-OYG 19.5 RADAR	MUELL I-OYG 16.4 RADAR	FFRAN INT I-OYG 13.3 RADAR	EZZEL INT I-OYG 4.8 RADAR	RANDI INT I-OYG 1.9 RADAR	DEERE
3.1 NM	3.1 NM	3.1 NM	3.1 NM	3.1 NM	5.3 NM	2.8 NM	0.7 1.1 0.1
VGSi and ILS glidepath not coincident (VGSi Angle 3.00/TCH 72). GS 3.00° TCH 55 1200 4000 OBK DEERE hdg 037° R-097							



CATEGORY	A	B	C	D
S-ILS 9C	873/18 200 (200-½)			
S-LOC 9C	1140/24	467 (500-½)	1140/50	467 (500-1)

HIRL all Rwys	TDZ/CL all Rwys except 4L				
FAF to MAP 4.9 NM					
Knots	60	90	120	150	180
Min:Sec	4:54	3:16	2:27	1:58	1:38

EC-3, 11 JUN 2026 to 09 JUL 2026

EC-3, 11 JUN 2026 to 09 JUL 2026