

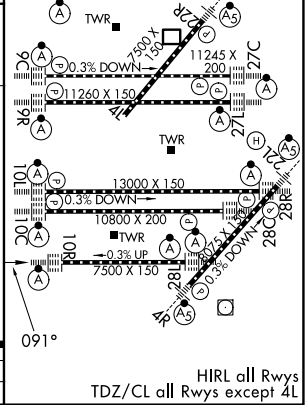
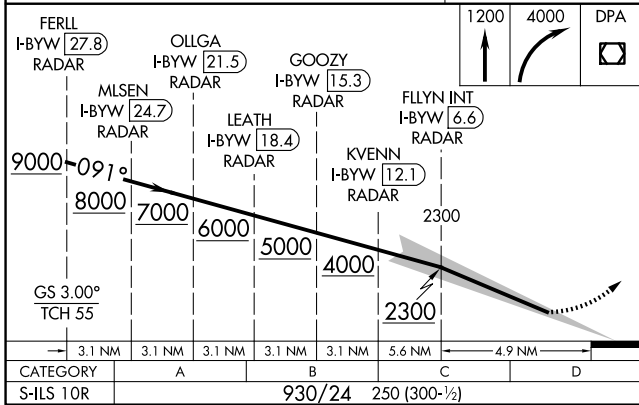
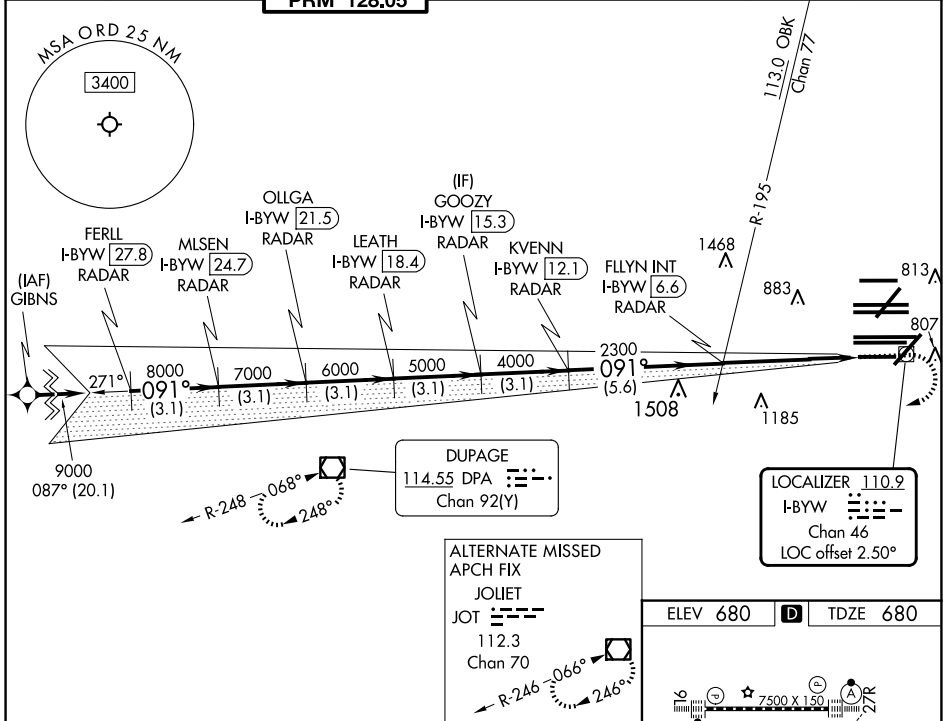
LOC/DME I-BYW 110.9 Chan 46	APP CRS 091°	Rwy Ldg 7500	TDZE 680
		Apt Elev 680	

ILS PRM Y RWY 10R (CLOSE PARALLEL)

CHICAGO O'HARE INTL (ORD)

RNAV 1-GPS or RADAR required for procedure entry. DME or RADAR required. From GIBNS: RNAV-1 GPS required.	ALSIF-2 	MISSED APPROACH: Climb to 1200 then climbing right turn to 4000 direct DPA VOR/DME and hold.
Simultaneous approach authorized. Use of FD or AP required during simultaneous operations. Dual VHF Comm required. See additional requirements on AAUP.		

D-ATIS 135.4 282.225	CHICAGO APP CON 119.0 292.125	O'HARE TOWER 133.0 348.0 PRM 128.05	GND CON (TWR CENTER) 124.125 (TWR NORTH) 118.05 (TWR SOUTH) 226.675 (ALL TWRS)	(TWR CENTER) (OBND) 121.75 (OBND) 121.9 (IBND)	CLNC DEL 121.6	CPDLC
--	---	---	--	--	--------------------------	-------



EC-3, 11 JUN 2026 to 09 JUL 2026

EC-3, 11 JUN 2026 to 09 JUL 2026