

LOC/DME I-BYW 110.9 Chan 46	APP CRS 091°	Rwy Ldg 7500 TDZE 680 Apt Elev 680
--	------------------------	---

ILS Y or LOC Y RWY 10R

CHICAGO O'HARE INTL (ORD)

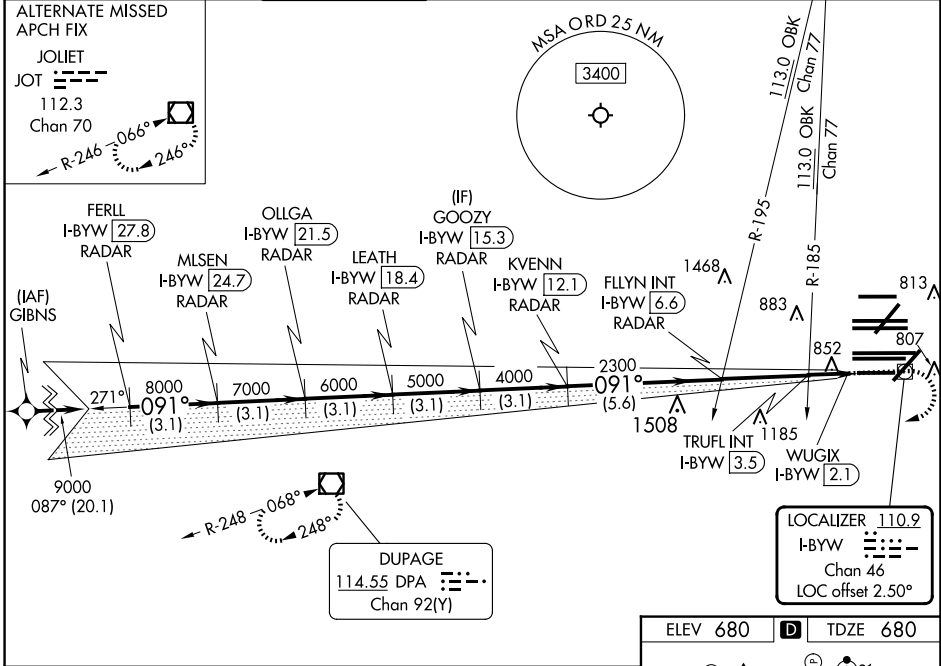
RNAV 1-GPS or RADAR required for procedure entry. DME or RADAR required.
From GIBNS: RNAV-1 GPS required.

Simultaneous approach authorized.

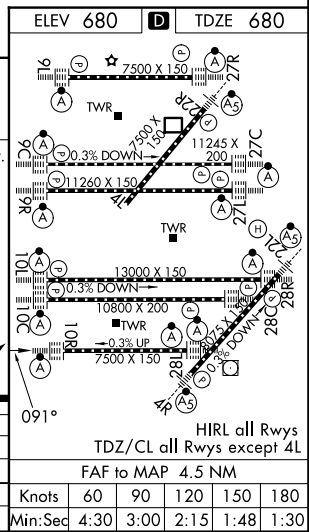
ALSF-2

MISSED APPROACH: Climb to 1200 then climbing right turn to 4000 direct DPA VOR/DME and hold.

D-ATIS 135.4 282.225	CHICAGO APP CON 119.0 292.125	O'HARE TOWER 133.0 348.0	GND CON (TWR CENTER) 124.125 (TWR NORTH) 118.05 (TWR SOUTH) 226.675 (ALL TWRS)	(TWR CENTER) 121.75 (OBND) 121.9 (IBND)	CLNC DEL 121.6	CPDLC
--	---	------------------------------------	--	---	--------------------------	-------



FERIL I-BYW 27.8 RADAR	OLLGA I-BYW 21.5 RADAR	GOOZY I-BYW 15.3 RADAR	FLYIN INT I-BYW 6.6 RADAR	TRUFL INT I-BYW 3.5 RADAR	WUGIX I-BYW 2.1 RADAR
9000	8000	7000	6000	5000	4000
GS 3.00° TCH 55					
*1200					
*LOC only.					
1200	4000	DPA			
CATEGORY A B C D					
S-ILS 10R 930/24 250 (300-½)					
S-LOC 10R 1220/24 540 (600-½) 1220/55 540 (600-1)					
TRUFL FIX MINIMUMS (DUAL VOR RECEIVERS OR DME REQUIRED)					
S-LOC 10R 1120/24 440 (500-½) 1120/40 440 (500-¾)					



EC-3, 11 JUN 2026 to 09 JUL 2026

EC-3, 11 JUN 2026 to 09 JUL 2026