

WAAS CH <b>48904</b> <b>W10A</b>	APP CRS <b>093°</b>	Rwy Ldg <b>12246</b> TDZE <b>672</b> Apt Elev <b>680</b>
--	------------------------	--

# RNAV (GPS) RWY 10L

CHICAGO O'HARE INTL (ORD)

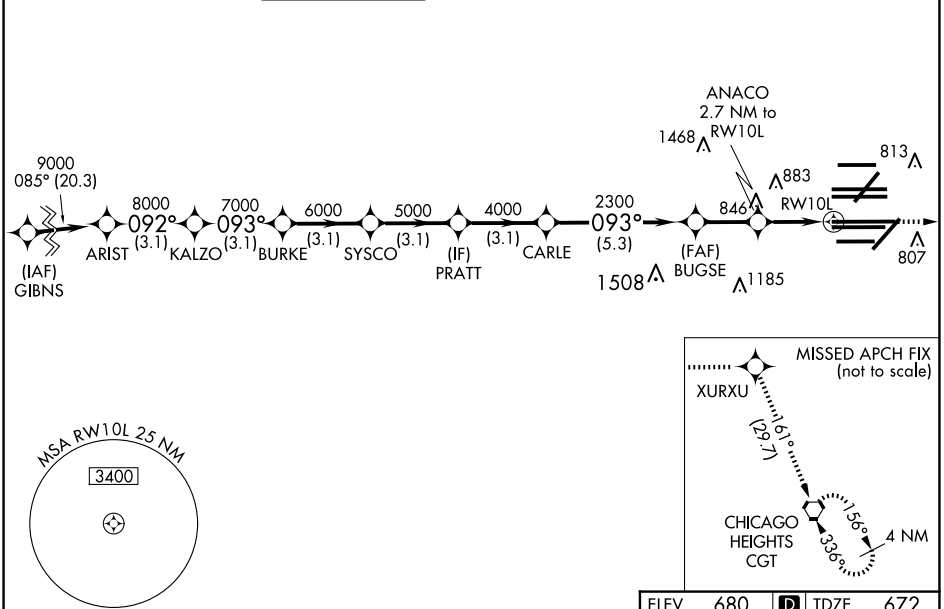
RADAR required for procedure entry: RNP APCH.

▼ For uncompensated Baro-VNAV systems, LNAV/VNAV NA below -19°C or above 54°C. Simultaneous approach authorized. LNAV procedure NA during simultaneous operations. Use of FD or AP providing RNAV track guidance required during simultaneous operations.



MISSED APPROACH: Climb to 4000 direct XURXU and on track 161° to CGT VORTAC and hold.

D-ATIS <b>135.4</b> <b>282.225</b>	CHICAGO APP CON <b>119.0 292.125</b>	O'HARE TOWER <b>132.7 348.0</b>	<b>124.125</b> (TWR NORTH) <b>118.05</b> (TWR SOUTH) <b>226.675</b> (ALL TWRS)	GND CON (TWR CENTER) <b>121.75</b> (OBND) <b>121.9</b> (IBND)	CLNC DEL <b>121.6</b>	CPDLC
--	---	------------------------------------	--	---	--------------------------	-------



EC-3, 11 JUN 2026 to 09 JUL 2026

EC-3, 11 JUN 2026 to 09 JUL 2026

VGSi and RNAV glidepath not coincident (VGSi Angle 3.00/TCH 74).					4000	XURXU	tr 161°	CGT
ARIST	KALZO	BURKE	SYSCO	PRATT	CARLE	BUGSE	ANACO	RW10L
9000	8000	7000	6000	5000	4000	2300	2300	1580
GP 3.00°							2.7 NM to RW10L	1.2 NM to RW10L
TCH 56								
	3.1 NM	3.1 NM	3.1 NM	3.1 NM	3.1 NM	5.3 NM	-2.2 NM	1.5 1.2
CATEGORY	A		B		C		D	
LPV DA	872/18		200 (200-½)					
LNAV/VNAV DA	1062/35		390 (400-¾)					
LNAV MDA	1120/24		448 (500-½)		1120/45		448 (500-¾)	

