


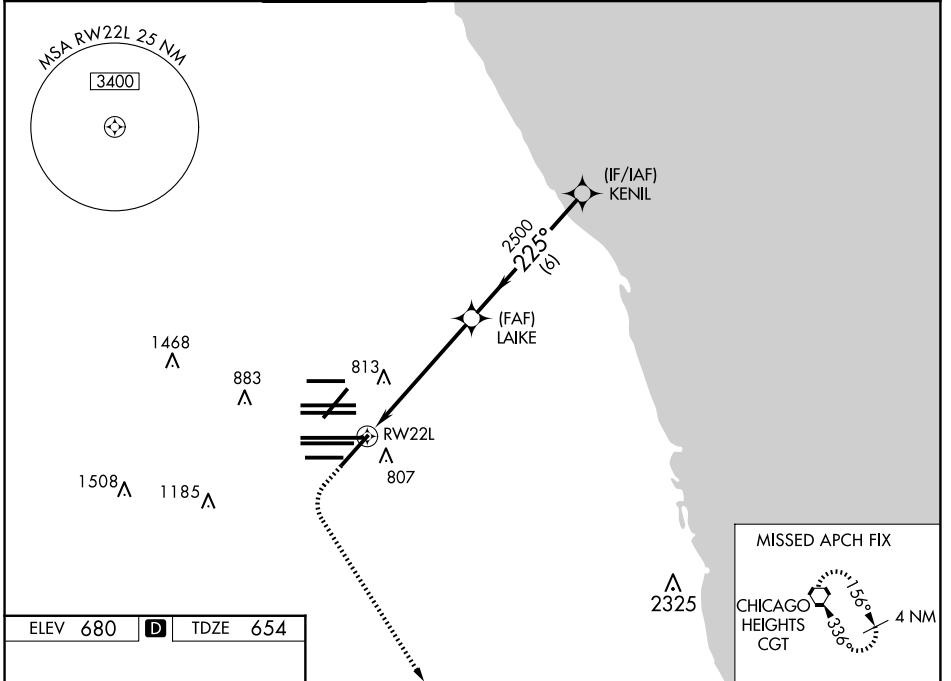
WAAS CH 50228 W22B	APP CRS 225°	Rwy Ldg TDZE Apt Elev	8075 654 680
--	------------------------	-----------------------------	---

RNAV (GPS) RWY 22L

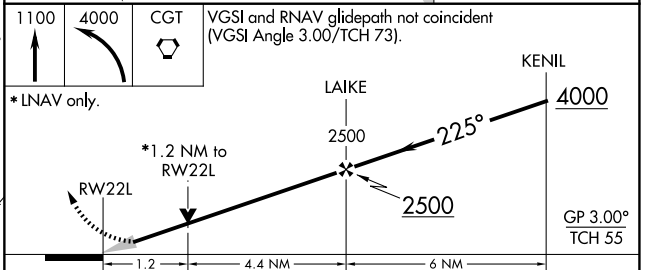
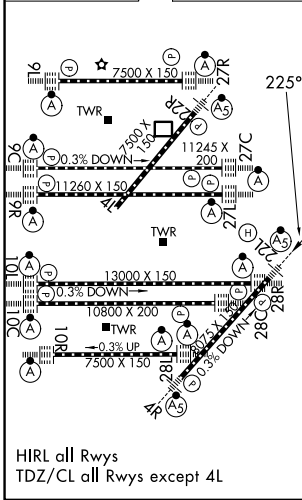
CHICAGO O'HARE INTL (ORD)

<p>⚠ For uncompensated Baro-VNAV systems, LNAV/VNAV NA below -19°C (-2°F) or above 54°C (130°F). Simultaneous approach authorized with Rwy 22R. DME/DME RNP-0.3 NA. LNAV procedure NA during simultaneous operations. Use of FD or AP providing RNAV track guidance required during simultaneous operations.</p>	<p>MALSR</p> 	<p>MISSED APPROACH: Climb to 1100 then climbing left turn to 4000 direct CGT VORTAC and hold.</p>
---	--	---

D-ATIS 135.4 282.225	CHICAGO APP CON 119.0 292.125	O'HARE TOWER 120.75 348.0	GND CON (TWR NORTH) 124.125 (TWR SOUTH) 118.05 (ALL TWRs) 226.675	(TWR CENTER) 121.75 (OBND) 121.9 (IBND)	CLNC DEL 121.6	CPDLC
--	---	-------------------------------------	---	---	--------------------------	-------



ELEV 680	D	TDZE 654
----------	----------	----------



CATEGORY	A	B	C	D
LPV DA		854/18	200 (200-½)	
LNAV/VNAV DA		1066/45	412 (400-¾)	
LNAV MDA	1120/24	466 (500-½)	1120/50	466 (500-1)
C CIRCLING	1220-1	540 (600-1)	1220-1½ 540 (600-1½)	1460-2½ 780 (800-2½)

EC-3, 11 JUN 2026 to 09 JUL 2026

EC-3, 11 JUN 2026 to 09 JUL 2026