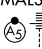


WAAS CH 90504 W22A	APP CRS 223°	Rwy Ldg 7300 TDZE 652 Apt Elev 680
--	------------------------	---

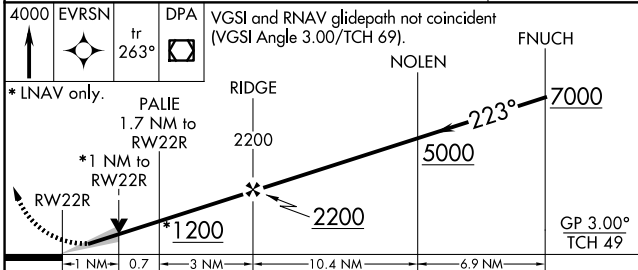
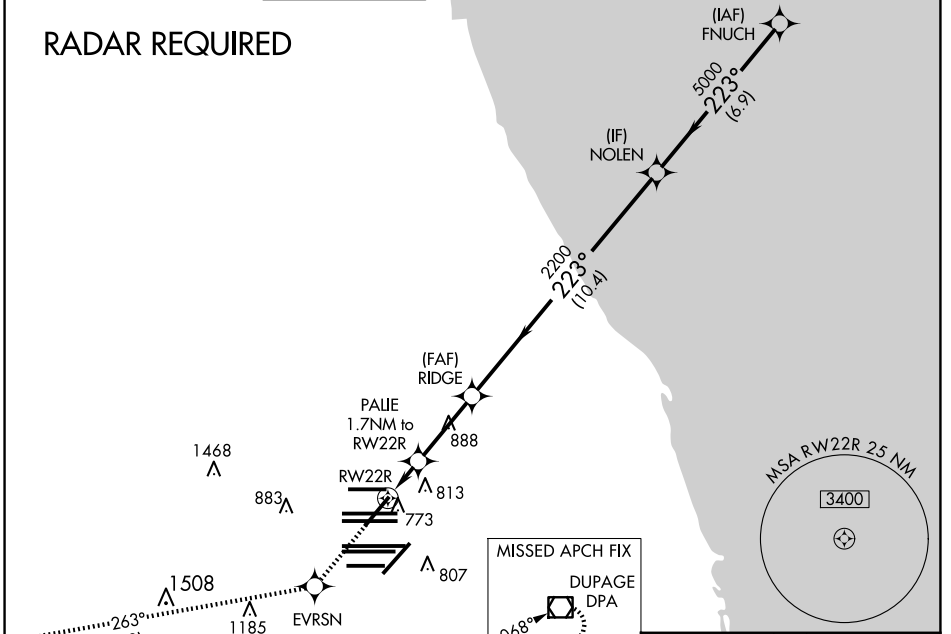
RNAV (GPS) RWY 22R

CHICAGO O'HARE INTL (ORD)

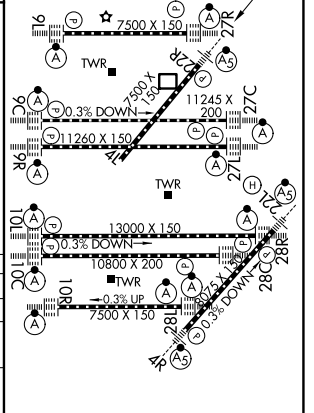
⚠ For uncompensated Baro-VNAV systems, LNAV/VNAV NA below -22°C (-7°F) or above 39°C (102°F). Simultaneous approach authorized with Rwy 22L. DME/DME RNP-0.3 NA. LNAV procedure NA during simultaneous operations. Use of FD or AP providing RNAV track guidance required during simultaneous operations.

MALSR  MISSED APPROACH: Climb to 4000 direct EVRSN and on track 263° to DPA VOR/DME and hold.

D-ATIS 135.4 282.225	CHICAGO APP CON 119.0 292.125	O'HARE TOWER 126.9 348.0	GND CON (TWR NORTH) 124.125 (TWR SOUTH) 118.05 (ALL TWRs) 226.675	(TWR CENTER) (OBND) 121.75 (IBND) 121.9	CLNC DEL 121.6	CPDLC
--	--	------------------------------------	---	---	--------------------------	-------



ELEV 680	D	TDZE 652
----------	----------	----------



CATEGORY	A	B	C	D
LPV DA		852/18	200 (200-½)	
LNAV/VNAV DA		972/32	320 (300-¾)	
LNAV MDA	1040/24	388 (400-½)	1040/35	388 (400-¾)
C CIRCLING	1220-1	540 (600-1)	1220-1½	1460-2½
			540 (600-1½)	780 (800-2½)

HIRL all Rwys
TDZ/CL all Rwys except 4L

EC-3, 11 JUN 2026 to 09 JUL 2026

EC-3, 11 JUN 2026 to 09 JUL 2026