

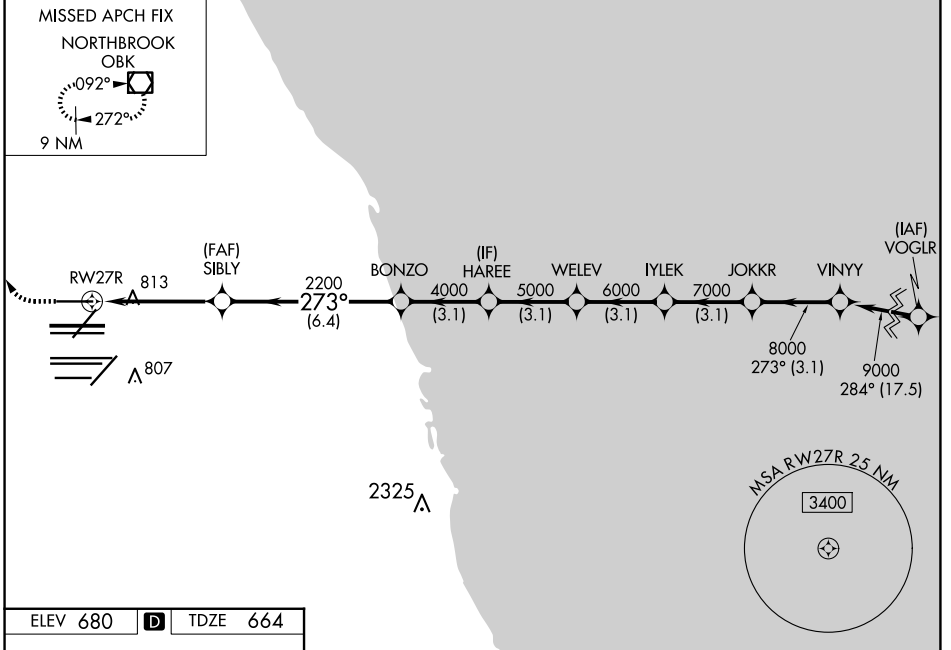
WAAS CH <b>69508</b> <b>W27B</b>	APP CRS <b>273°</b>	Rwy Ldg TDZE Apt Elev	<b>7500</b> <b>664</b> <b>680</b>
--	------------------------	-----------------------------	---

# RNAV (GPS) RWY 27R

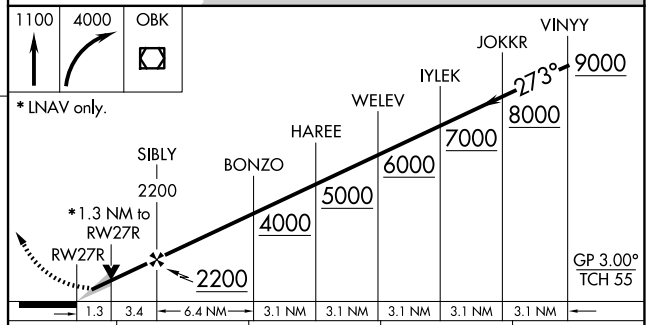
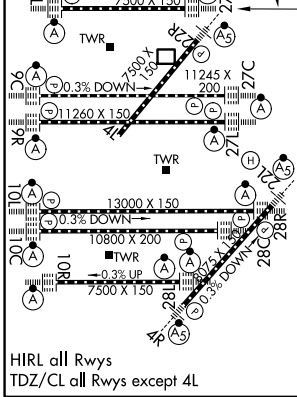
CHICAGO O'HARE INTL (ORD)

RNP APCH.	ALSF-2 	MISSED APPROACH: Climb to 1100 then climbing right turn to 4000 direct OBK VOR/DME and hold, continue climb-in-hold to 4000.
RADAR required for procedure entry.		
Simultaneous approach authorized. LNAV procedure NA during simultaneous operations. Use of FD or AP providing RNAV track guidance required during simultaneous operations. For uncompensated Baro-VNAV systems, procedure NA below -1°C or above 54°C.		

D-ATIS <b>135.4</b> <b>282.225</b>	CHICAGO APP CON <b>119.0 292.125</b>	O'HARE TOWER <b>128.15 348.0</b>	GND CON (TWR NORTH) <b>124.125</b> (TWR SOUTH) <b>118.05</b> <b>226.675</b> (ALL TWRs)	(TWR CENTER) (OBND) <b>121.75</b> (IBND) <b>121.9</b>	CLNC DEL <b>121.6</b>	CPDLC
--	---	-------------------------------------	---	---	--------------------------	-------



ELEV 680	<b>D</b>	TDZE 664
----------	----------	----------



CATEGORY	A	B	C	D
LPV DA		864/18	200 (200-½)	
LNAV/VNAV DA		961/24	297 (300-½)	
LNAV MDA	1120/24	456 (500-½)	1120/45	456 (500-¾)

EC-3, 11 JUN 2026 to 09 JUL 2026

EC-3, 11 JUN 2026 to 09 JUL 2026