

WAAS CH <b>42804</b> <b>W28A</b>	APP CRS <b>273°</b>	Rwy Ldg <b>13000</b> TDZE <b>651</b> Apt Elev <b>680</b>
--	------------------------	--

# RNAV (GPS) RWY 28R

CHICAGO O'HARE INTL (ORD)

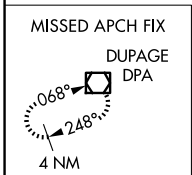
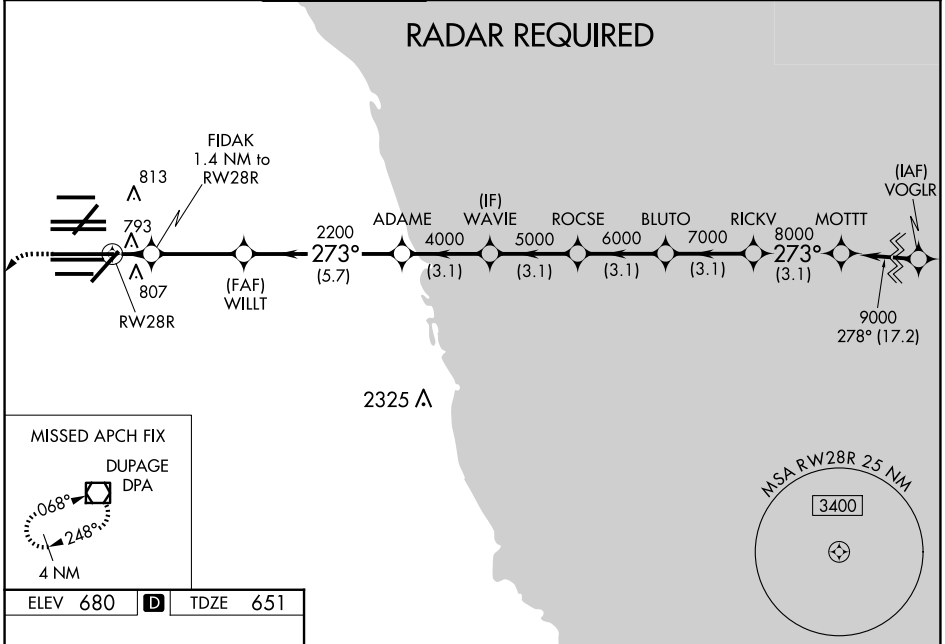
⚠ For uncompensated Baro-VNAV systems, LNAV/VNAV NA below -19°C (-2°F) or above 54°C (130°F). Simultaneous approach authorized. DME/DME RNP-0.3 NA. For inop ALSF-2, increase LNAV/VNAV all Cats visibility to 1½ mile and LNAV Cats C/D visibility to RVR 6000. LNAV procedure NA during simultaneous operations. Use of FD or AP providing RNAV track guidance required during simultaneous operations.

ALSF-2

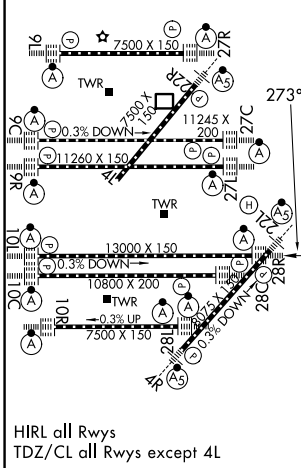


MISSED APPROACH: Climb to 1200 then climbing left turn to 4000 direct DPA VOR/DME and hold.

D-ATIS <b>135.4</b> <b>282.225</b>	CHICAGO APP CON <b>119.0 292.125</b>	O'HARE TOWER <b>132.7 348.0</b>	GND CON (TWR NORTH) <b>124.125</b> (TWR SOUTH) <b>118.05</b> (ALL TWRs) <b>226.675</b>	(TWR CENTER) <b>121.75</b> (OBND) <b>121.9</b> (IBND)	CLNC DEL <b>121.6</b>	CPDLC
--	---	------------------------------------	---	---	--------------------------	-------



ELEV 680	<b>D</b>	TDZE 651
----------	----------	----------



1200	4000	DPA	VGSI and RNAV glidepath not coincident (VGSI Angle 3.00°/TCH 70°).	
*LNAV only.				
FIDAK 1.4 NM to RW28R	WILLT 2200	ADAME 4000	WAVIE 5000	
ROCSE 6000	BLUTO 7000	RICKV 8000	MOTT 9000	
1.4	3.3 NM	5.7 NM	3.1 NM, 3.1 NM, 3.1 NM, 3.1 NM	
CATEGORY	A	B	C	D
LPV DA	851/18		200 (200-½)	
LNAV/VNAV DA	1041/45		390 (400-¾)	
LNAV MDA	1060/24	409 (400-½)	1060/40	409 (400-¾)

EC-3, 11 JUN 2026 to 09 JUL 2026

EC-3, 11 JUN 2026 to 09 JUL 2026