

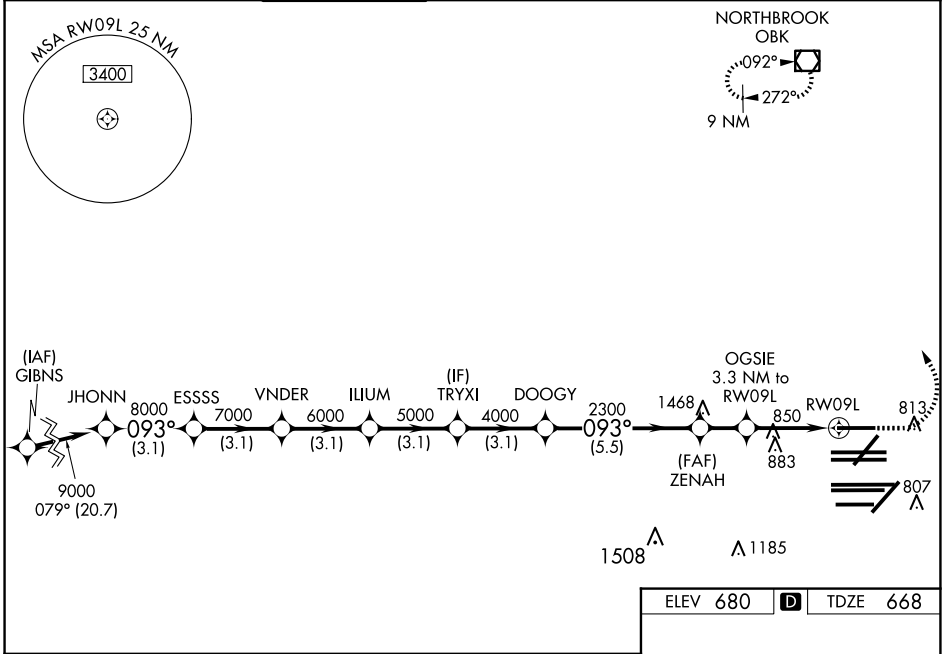
WAAS CH 99508 W09B	APP CRS 093°	Rwy Ldg 7500 TDZE 668 Apt Elev 680
--	------------------------	---

RNAV (GPS) RWY 9L

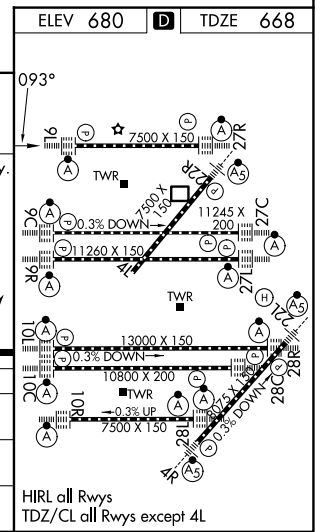
CHICAGO O'HARE INTL (ORD)

RADAR required for procedure entry. RNP APCH.		ALSIF-2 	MISSED APPROACH: Climb to 1100 then climbing left turn to 4000 direct OBK VOR/DME and hold, continue climb-in-hold to 4000.
<p>Simultaneous approach authorized. LNAV procedure NA during simultaneous operations. Use of FD or AP providing RNAV track guidance required during simultaneous operations. For uncompensated Baro-VNAV systems, procedure NA below -19°C or above 54°C.</p>			

D-ATIS 135.4 282.225	CHICAGO APP CON 119.0 292.125	O'HARE TOWER 128.15 348.0	GND CON (TWR NORTH) 124.125 (TWR SOUTH) 118.05 (ALL TWRS) 226.675	(TWR CENTER) 121.75 (OBND) 121.9 (IBND)	CLNC DEL 121.6	CPDLC
--	---	-------------------------------------	--	--	--------------------------	-------



JHONN		ESSSS		VNDER		ILIUM		TRYXI		ZENAH		OGSIE 3.3 NM to RW09L					
9000	8000	7000	6000	5000	4000	2300	*1760										
GP 3.00° TCH 55																	
3.1 NM		3.1 NM		3.1 NM		3.1 NM		3.1 NM		5.5 NM		1.7 NM		2.1		1.2	
CATEGORY	A		B				C		D								
LPV DA			868/18				200 (200-½)										
LNAV/VNAV DA			1034/35				366 (400-¾)										
LNAV MDA	1100/24		432 (500-½)				1100/40		432 (500-¾)								



EC-3, 11 JUN 2026 to 09 JUL 2026

EC-3, 11 JUN 2026 to 09 JUL 2026