

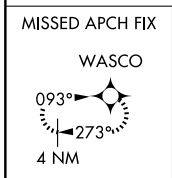
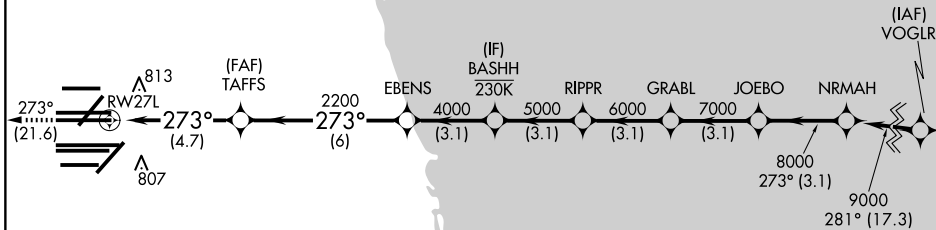
APP CRS <b>273°</b>	Rwy Ldg <b>11260</b>
	TDZE <b>654</b>
	Apt Elev <b>680</b>

# RNAV (RNP) Y RWY 27L

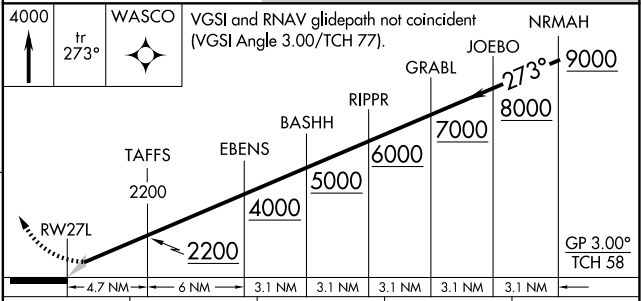
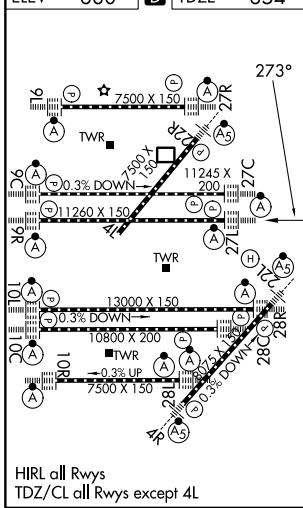
CHICAGO O'HARE INTL (ORD)

RNP AR APCH - GPS.				MISSED APPROACH: Climb to 4000 on track 273° to WASCO and hold.		
Simultaneous approach authorized. Use of FD or AP required during simultaneous operations. For uncompensated Baro-VNAV systems, procedure NA below -19°C or above 54°C.						
D-ATIS <b>135.4</b> <b>282.225</b>	CHICAGO APP CON <b>119.0 292.125</b>	O'HARE TOWER <b>126.9 348.0</b>	GND CON <b>124.125</b> (TWR NORTH) <b>118.05</b> (TWR SOUTH) <b>226.675</b> (ALL TWRs)	(TWR CENTER) <b>121.75</b> (OBND) <b>121.9</b> (IBND)	CLNC DEL <b>121.6</b>	CPDLC

## RADAR REQUIRED



ELEV 680	<b>D</b>	TDZE 654
----------	----------	----------



CATEGORY	A	B	C	D
RNP 0.15 DA		989/26	335 (400-½)	
RNP 0.30 DA		1133/50	479 (500-1)	

**AUTHORIZATION REQUIRED**

EC-3, 11 JUN 2026 to 09 JUL 2026

EC-3, 11 JUN 2026 to 09 JUL 2026