

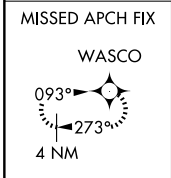
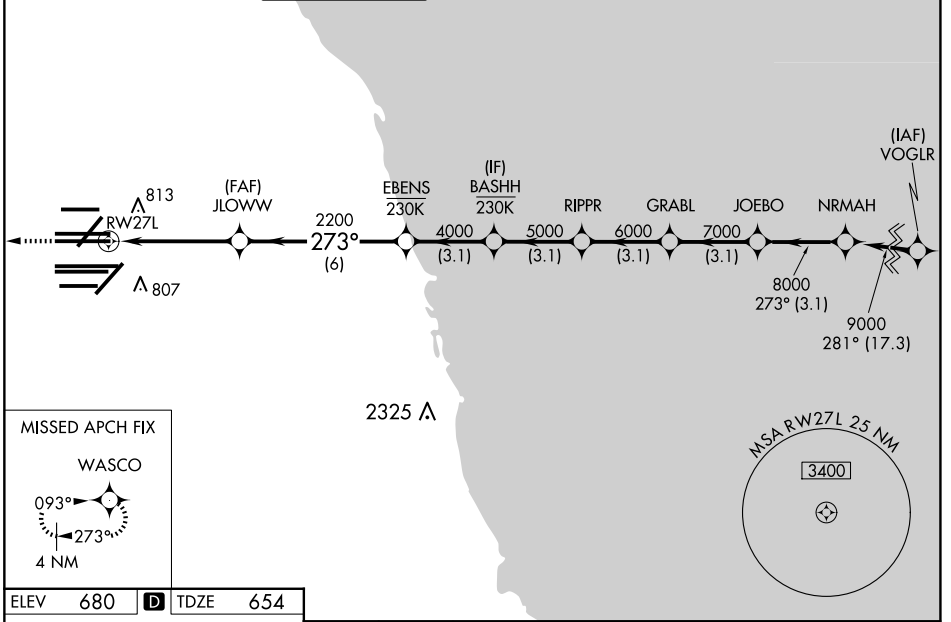
WAAS CH <b>77804</b> <b>W27A</b>	APP CRS <b>273°</b>	Rwy Ldg <b>11260</b> TDZE <b>654</b> Apt Elev <b>680</b>
--	------------------------	--

# RNAV (GPS) Z RWY 27L

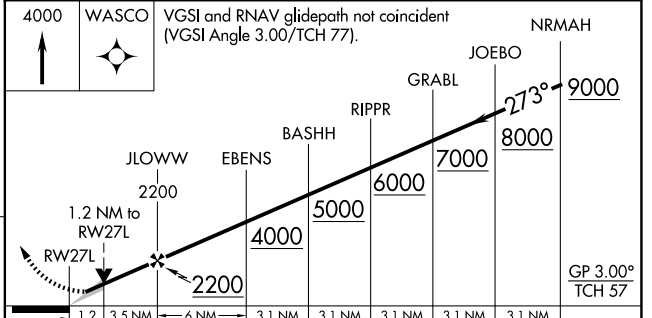
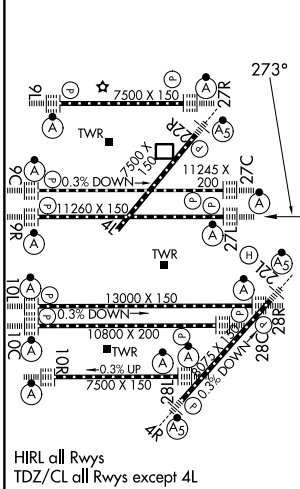
CHICAGO O'HARE INTL (ORD)

RNP APCH - GPS.		ALSF-2	MISSED APPROACH: Climb to 4000 direct WASCO and hold.
<p>Simultaneous approach authorized. LNAV procedure NA during simultaneous operations. Use of FD or AP required during simultaneous operations. For uncompensated Baro-VNAV systems, LNAV/VNAV NA below -19°C or above 54°C.</p>			

D-ATIS <b>135.4</b> <b>282.225</b>	CHICAGO APP CON <b>119.0 292.125</b>	O'HARE TOWER <b>126.9 348.0</b>	GND CON <b>124.125</b> (TWR NORTH) <b>118.05</b> (TWR SOUTH) <b>226.675</b> (ALL TWR/S)	(TWR CENTER) <b>121.75</b> (IOBND) <b>121.9</b> (IBND)	CLNC DEL <b>121.6</b>	CPDLC
--	--	------------------------------------	--	--	--------------------------	-------



ELEV 680	<b>D</b>	TDZE 654
----------	----------	----------



CATEGORY	A	B	C	D
LPV DA		854/18	200 (200-1/2)	
LNAV/VNAV DA		1088/40	434 (500-3/4)	
LNAV MDA	1100/24	446 (500-1/2)	1100/45	446 (500-7/8)

EC-3, 11 JUN 2026 to 09 JUL 2026

EC-3, 11 JUN 2026 to 09 JUL 2026