

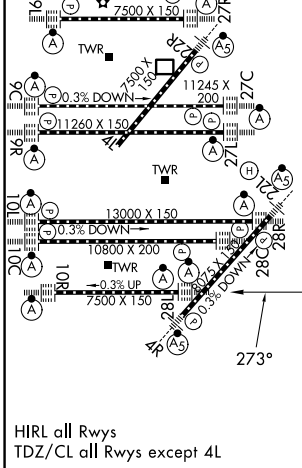
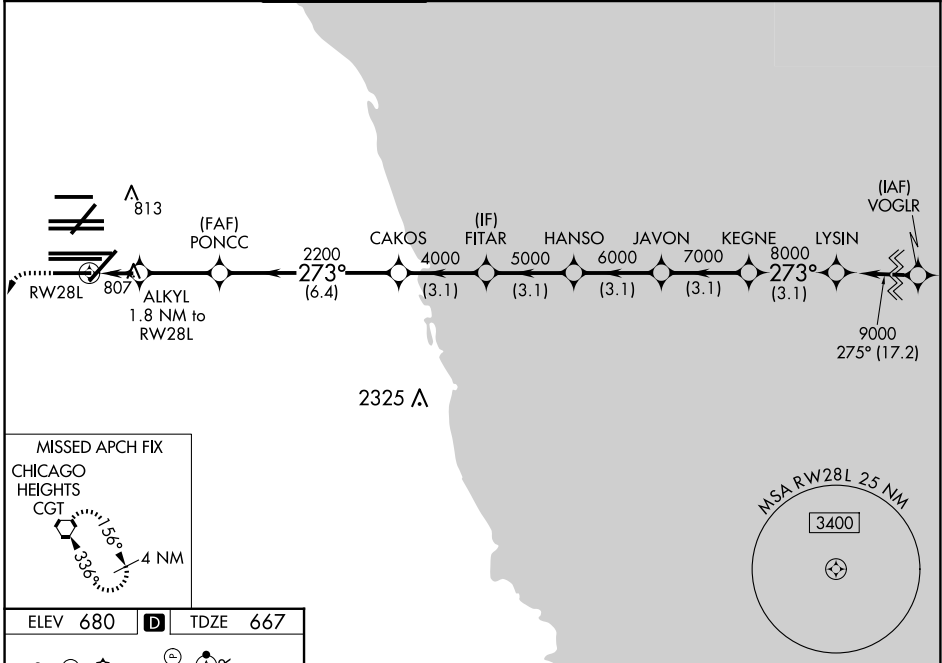
WAAS CH <b>65837</b> <b>W28D</b>	APP CRS <b>273°</b>	Rwy Ldg TDZE <b>7500</b> <b>667</b> Apt Elev <b>680</b>
--	------------------------	---

# RNAV (GPS) Z RWY 28L

CHICAGO O'HARE INTL (ORD)

RNP APCH.	ALSIF-2	MISSED APPROACH: Climb 1200 then climbing left turn to 4000 direct CGT VORTAC and hold.
⚠ Simultaneous approach authorized. LNAV procedure NA during simultaneous operations. For uncompensated Baro-VNAV systems, LNAV/VNAV NA below -19C or above 54C. Use of FD or AP required during simultaneous operations.		

D-ATIS <b>135.4</b> <b>282.225</b>	CHICAGO APP CON <b>119.0 292.125</b>	O'HARE TOWER <b>133.0 348.0</b>	GND CON <b>124.125</b> (TWR NORTH) <b>118.05</b> (TWR SOUTH) <b>226.675</b> (ALL TWRs)	(TWR CENTER) <b>121.75</b> (OBND) <b>121.9</b> (IBND)	CLNC DEL <b>121.6</b>	CPDLC
--	---	------------------------------------	---	---	--------------------------	-------



ELEV 680	D	TDZE 667		
1200 4000 CGT *LNAV only. ALKYL 1.8 NM to RWY28L *1.1 NM to RWY28L RWY28L *1280 2200 1.1 NM 0.7 2.9 NM 6.4 NM 3.1 NM 3.1 NM 3.1 NM 3.1 NM 3.1 NM				
CATEGORY	A	B	C	D
LPV DA	867/18		200 (200-1/2)	
LNAV/VNAV DA	1090/40		423 (500-3/4)	
LNAV MDA	1060/24 393 (400-1/2)		1060/35 393 (400-5/8)	

EC-3, 11 JUN 2026 to 09 JUL 2026

EC-3, 11 JUN 2026 to 09 JUL 2026