

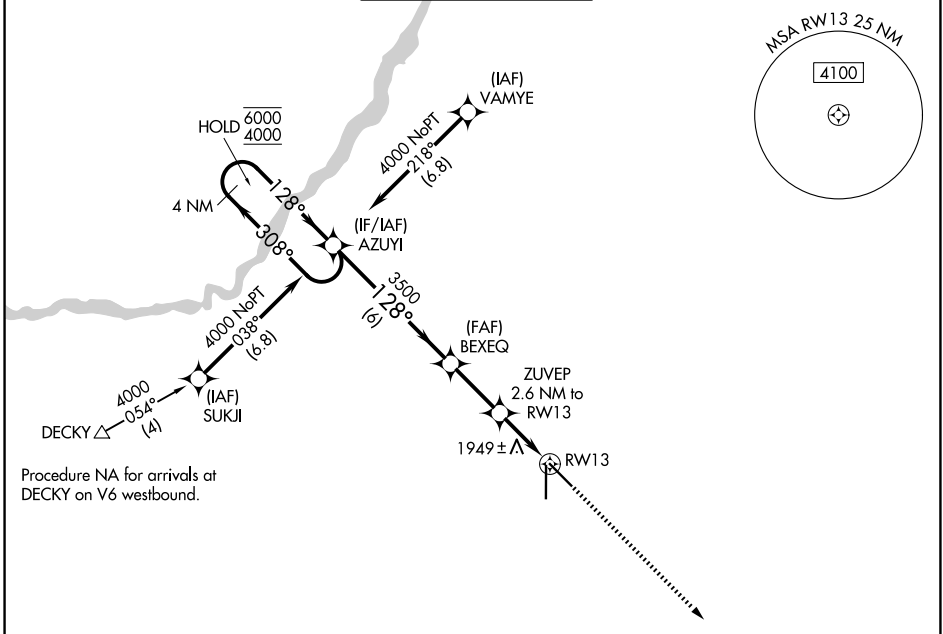
APP CRS	Rwy Ldg	6608
128°	TDZE	1842
	Apt Elev	1847

RNAV (GPS) RWY 13

CENTRAL NEBRASKA RGNL (GRI)

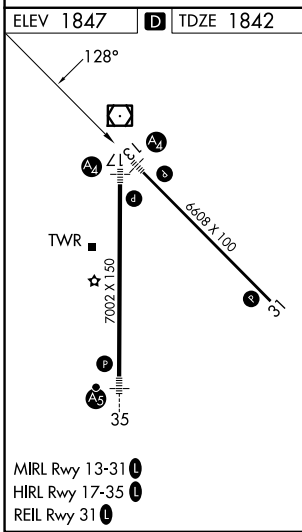
RNP APCH - GPS.		MALS	MISSED APPROACH: Climb to 4100 direct AGEKY and hold.	

ATIS 127.4	MINNEAPOLIS CENTER 119.4 278.8	GRAND ISLAND TOWER * 118.2 (CTAF) 0 259.3	GND CON 121.9 259.3	UNICOM 122.95
----------------------	--	---	-------------------------------	-------------------------



NC-2, 11 JUN 2026 to 09 JUL 2026

NC-2, 11 JUN 2026 to 09 JUL 2026



AGEKY 128° 308° 5 NM	
VGS1 and descent angles not coincident (VGS1 Angle 3.00/TCH 35).	
4 NM Holding Pattern 6000 ← 308° 4000 → 128°	AZUYI BEXEQ ZUVEP 2.6 NM to RW13 3500 2700 1 NM to RW13 RW13
6 NM 2.5 NM 1.5 NM 1 NM	
CATEGORY	A B C D
LNAV MDA	2200- ³ / ₄ 358 (400- ³ / ₄)
CIRCLING	2300-1 453 (500-1) 2400-1 ¹ / ₂ 2560-2 ¹ / ₄ 553 (600-1 ¹ / ₂) 713 (800-2 ¹ / ₄)